

LOC I-BZQ <b>111.5</b>	APP CRS <b>320°</b>	Rwy Ldg TDZE Apt Elev	<b>5701</b> <b>179</b> <b>187</b>
---------------------------	------------------------	-----------------------------	---

# ILS or LOC RWY 32

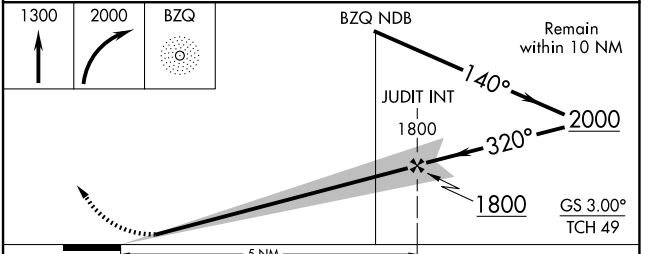
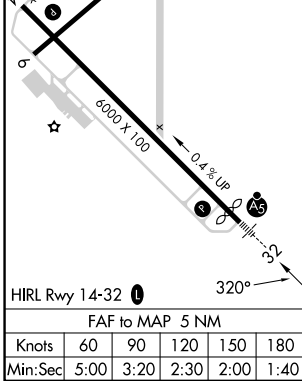
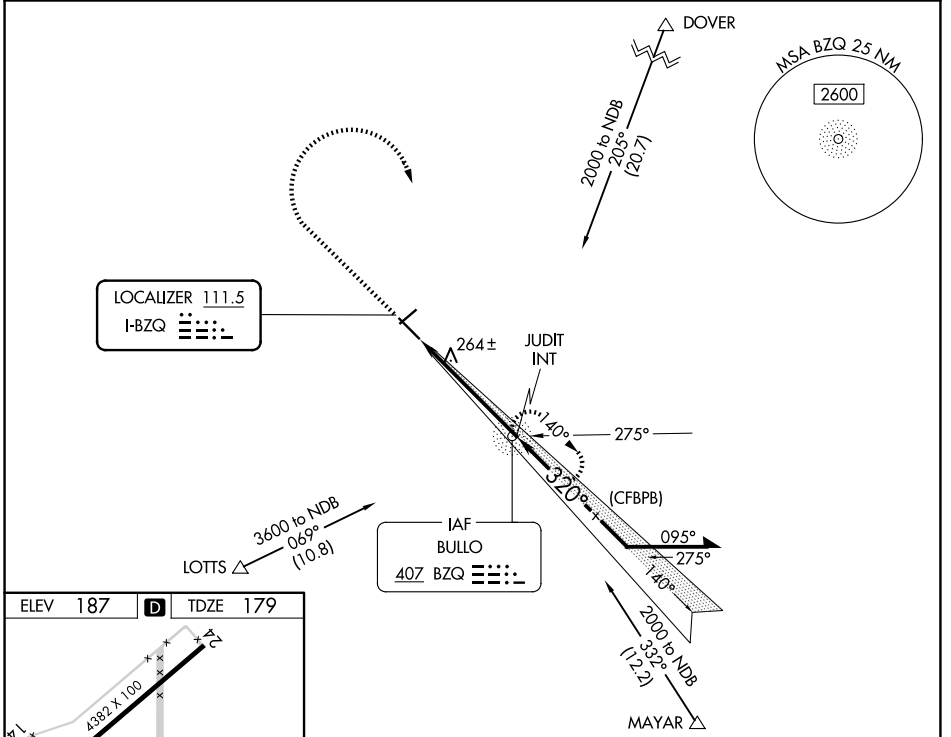
STATESBORO-BULLOCH COUNTY (TBR)

ADF required.

▼ Circling to Rwy 6, 24 NA at night. When local altimeter setting not received, use JYL altimeter setting and increase S-ILS 32 DA to 408 feet; increase all MDAs 40 feet; and Circling visibility Cat C ¼ SM. For inop ALS, increase S-LOC 32 Cat C and D visibility to 1 SM.

▲ MALSR MISSED APPROACH: Climb to 1300 then climbing right turn to 2000 direct BZQ NDB and hold.

AWOS-3 <b>119.025</b>	SAVANNAH APP CON ★ <b>118.4 307.225</b>	UNICOM <b>122.725 (CTAF) 0</b>
--------------------------	--	-----------------------------------



CATEGORY	A	B	C	D
S-ILS 32	379-½ 200 (200-½)			
S-LOC 32	520-½	341 (400-½)	520-5/8	341 (400-5/8)
CIRCLING	640-1 453 (500-1)	740-1 553 (600-1)	840-13/4 653 (700-13/4)	860-21/4 673 (700-21/4)

SE-4, 11 JUN 2026 to 09 JUL 2026

SE-4, 11 JUN 2026 to 09 JUL 2026