

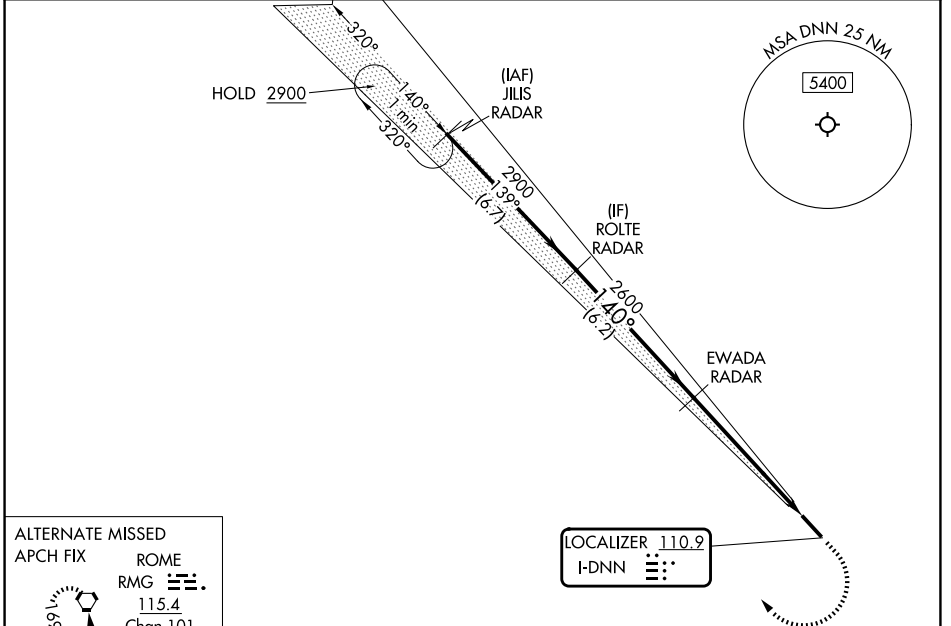
LOC I-DNN <b>110.9</b>	APP CRS <b>140°</b>	Rwy Ldg TDZE Apt Elev	<b>5496</b> <b>709</b> <b>709</b>
---------------------------	------------------------	-----------------------------	---

# ILS or LOC RWY 14

DALTON MUNI (DNN)

RNP APCH - GPS. RADAR required.	MALSR 	MISSED APPROACH: Climb to 1700 then climbing right turn to 3000 direct JILIS and hold.
<p><b>⚠</b> Circling to Rwy 32 NA at night. Autopilot coupled approach NA below 1200 MSL. Rwy 14 helicopter visibility reduction below 3/4 SM NA. Inop table does not apply to S-ILS 14. For inop ALS, increase S-LOC 14 Cat A/B visibility to 1 SM.</p>		

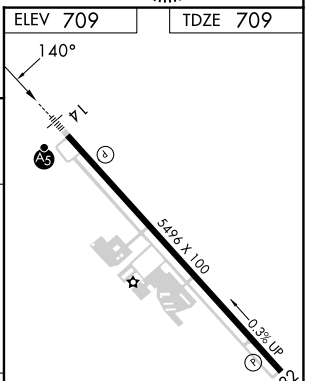
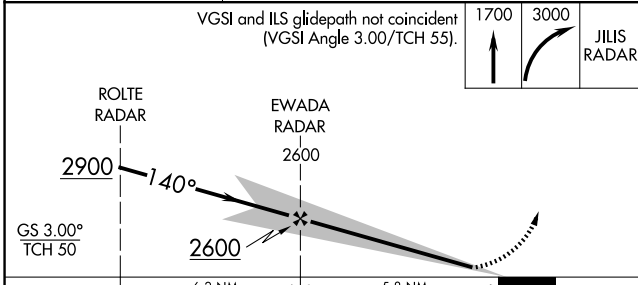
AWOS-3PT <b>127.65</b>	CHATTANOOGA APP CON ★ <b>125.1 379.1</b>	CLNC DEL <b>120.25</b>	UNICOM <b>122.975 (CTAF)</b>
---------------------------	---	---------------------------	---------------------------------



ALTERNATE MISSED APCH FIX

ROME  
RMG   
115.4  
Chan 101

R-169



CATEGORY	A	B	C	D	HIRL Rwy 14-32												
S-ILS 14	1074-3/4		365 (400-3/4)														
S-LOC 14	1260-3/4	551 (600-3/4)	1260-1 1/8	551 (600-1 1/8)	FAF to MAP 5.8 NM												
CIRCLING	1260-1	551 (600-1)	1340-1 3/4 631 (700-1 3/4)	1420-2 1/4 711 (800-2 1/4)	<table border="1"> <tr> <td>Knots</td> <td>60</td> <td>90</td> <td>120</td> <td>150</td> <td>180</td> </tr> <tr> <td>Min:Sec</td> <td>5:48</td> <td>3:52</td> <td>2:54</td> <td>2:19</td> <td>1:56</td> </tr> </table>	Knots	60	90	120	150	180	Min:Sec	5:48	3:52	2:54	2:19	1:56
Knots	60	90	120	150	180												
Min:Sec	5:48	3:52	2:54	2:19	1:56												

SE-4, 11 JUN 2026 to 09 JUL 2026

SE-4, 11 JUN 2026 to 09 JUL 2026