

APP CRS	Rwy Idg	<b>5501</b>
<b>022°</b>	TDZE	<b>846</b>
	Apt Elev	<b>874</b>

# RNAV (GPS) RWY 2

MCMINN COUNTY (MMI)

RNP APCH - GPS.

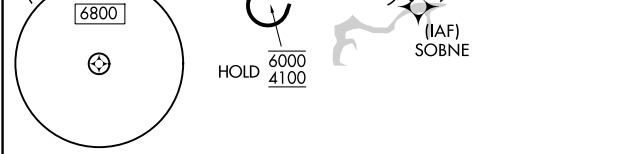
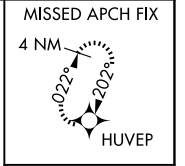
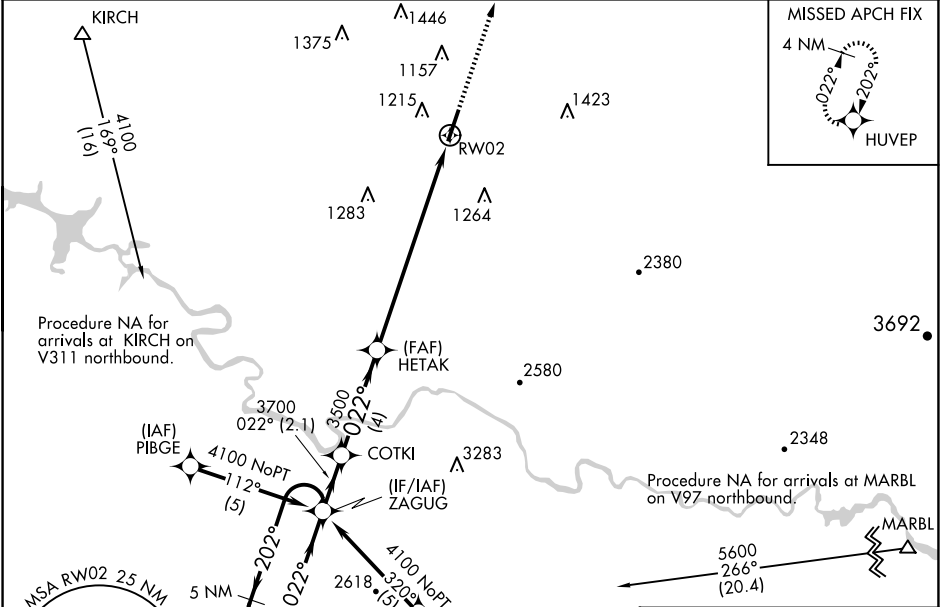
**▼** **▲** Rwy 2 helicopter visibility reduction below 1 SM NA. Straight-in Rwy 2 NA at night. Circling Rwy 2 NA at night. When local altimeter setting not received, use Mc Ghee Tyson altimeter setting and increase all MDAs 120 feet, and LNAV visibility Cats C and D ½ SM, and Circling visibility Cat A ¼ SM and Cat C ½ SM.

**MISSED APPROACH:**  
Climb to 3100 direct HUVEP and hold.

AWOS-3  
**125.425**

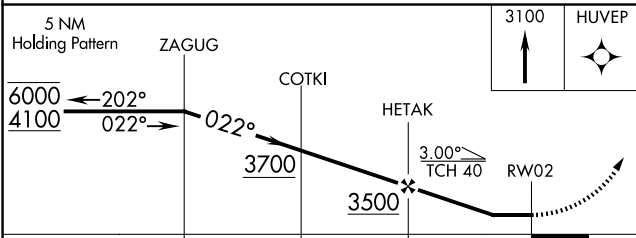
KNOXVILLE APP CON  
**123.9 353.6**

UNICOM  
**122.8 (CTAF)**



ELEV 874	TDZE 846
----------	----------

REIL Rwy 2 and 20  
MIRL Rwy 2-20



CATEGORY	A	B	C	D
LNVA MDA	1600-1 754 (800-1)	1600-1¼ 754 (800-1¼)	1600-2	754 (800-2)
CIRCLING	1600-1 726 (800-1)	1600-1¼ 726 (800-1¼)	1600-2 726 (800-2)	1820-3 946 (1000-3)

SE-1, 11 JUN 2026 to 09 JUL 2026

SE-1, 11 JUN 2026 to 09 JUL 2026