

LOC/DME I- OXC 109.55 Chan 32 (Y)	APP CRS 005°	Rwy Ldg 5301 TDZE 721 Apt Elev 730
--	------------------------	---

ILS or LOC RWY 36

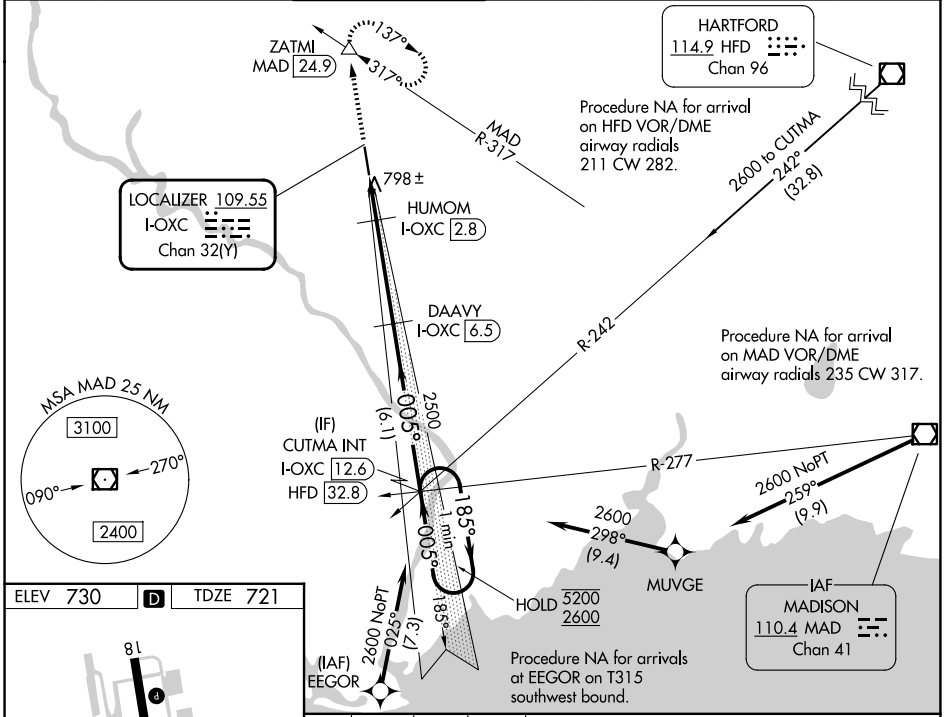
WATERBURY-OXFORD (OXC)

RNP APCH - GPS. From EEGOR or MAD VOR/DME.
DME required.

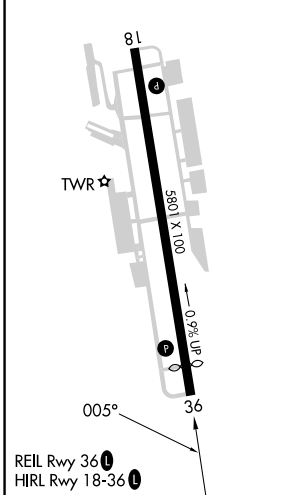
⚠ Rwy 36 helicopter visibility reduction below ¾ SM NA. When local weather not received, use DXR altimeter setting: increase S-ILS 35 DA to 1049 and all Cats visibilities ¼ SM; increase all MDAs 80 feet and S-LOC 36 visibility Cat C and D ½ SM, and Circling visibility Cat C and D ¼ SM.

MISSED APPROACH: Climb to 3000 on heading 005° and MAD VOR/DME R-317 to ZATMI/MAD 24.9 DME and hold, continue climb-in-hold to 3000.

ATIS 132.975	NEW YORK APP CON 124.075 343.65	OXFORD TOWER * 118.475 (CTAF) 0	GND CON 121.65	CLNC DEL 121.65	CLNC DEL 135.1 (When twr closed)	UNICOM 122.95
------------------------	---	--	--------------------------	---------------------------	---	-------------------------



ELEV 730	D	TDZE 721
-----------------	----------	-----------------



3000	hdg 005°	MAD R-317	ZATMI	DAAVY I-OXC 6.5	CUTMA INT I-OXC 12.6	One Minute Holding Pattern	
			HUMOM I-OXC 2.8	2500	185° → 5200		
			I-OXC 1	2500	← 005° 2600		
			1300	GS unusable below 965 MSL.	GS 3.00° TCH 56		
			← 1.8 NM	← 3.8 NM	← 6.1 NM		
CATEGORY	A		B		C		D
S-ILS 36			971-¾		250 (300-¾)		
S-LOC 36	1180-1	459 (500-1)			1180-1⅞	459 (500-1⅞)	
CIRCLING	1360-1	630 (700-1)			1380-1¾	1460-2¼	730 (800-2¼)

NE-1, 11 JUN 2026 to 09 JUL 2026

NE-1, 11 JUN 2026 to 09 JUL 2026