

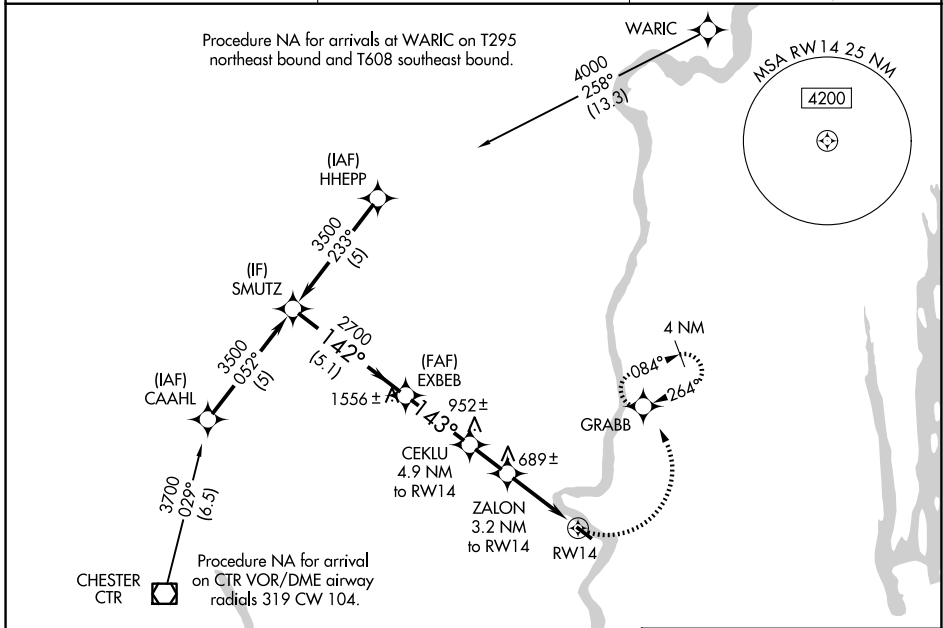
APP CRS	Rwy Ldg	3335
143°	TDZE	121
	Apt Elev	121

RNAV (GPS) RWY 14

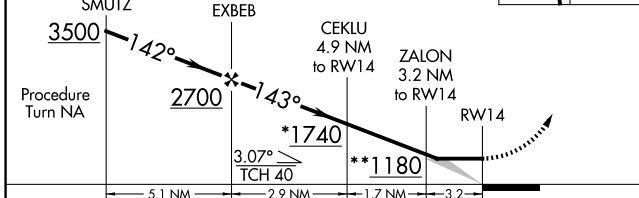
NORTHAMPTON (7B2)

RNP APCH - GPS.	<p>▼ Procedure NA at night. Obtain local altimeter setting on CTAF; when not received, use Windsor Locks altimeter setting. Rwy 14 helicopter visibility reduction below 1 SM NA.</p> <p>⚠ NA</p> <p>⚙ -24°C</p>	<p>MISSED APPROACH: Climbing left turn to 3000 direct GRABB and hold, continue climb-in-hold to 3000.</p>
-----------------	--	---

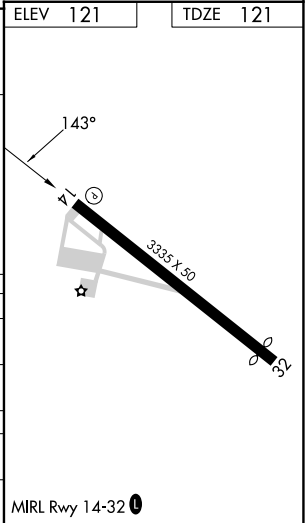
BRADLEY APP CON 125.35 281.5	CLNC DEL 133.6	UNICOM 122.7 (CTAF)
--	--------------------------	-------------------------------



<p>VGSI and descent angles not coincident (VGSI Angle 4.50/TCH 60).</p> <p>* 1820 when using Windsor Locks altimeter setting.</p> <p>** 1260 when using Windsor Locks altimeter setting.</p>	<p>3000</p> <p>GRABB</p>	<p>ELEV 121</p>	<p>TDZE 121</p>
--	--------------------------	-----------------	-----------------



CATEGORY	A	B	C	D
RNAV MDA	940-1 819 (900-1)	940-1¼ 819 (900-1¼)		NA
CIRCLING	940-1¼ 819 (900-1¼)	1400-1½ 1279 (1300-1½)		NA
WINDSOR LOCKS ALTIMETER SETTING MINIMUMS				
RNAV MDA	1020-1¼	899 (900-1¼)		NA
CIRCLING	1020-1¼ 899 (900-1¼)	1460-1½ 1339 (1400-1½)		NA



NE-1, 11 JUN 2026 to 09 JUL 2026

NE-1, 11 JUN 2026 to 09 JUL 2026