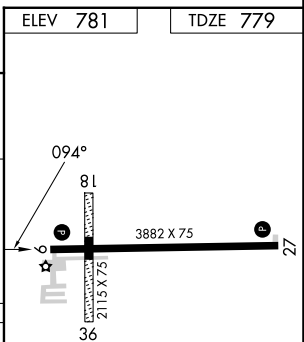
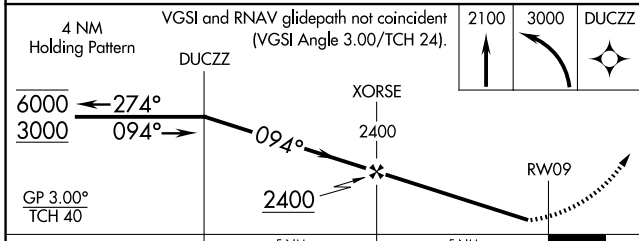
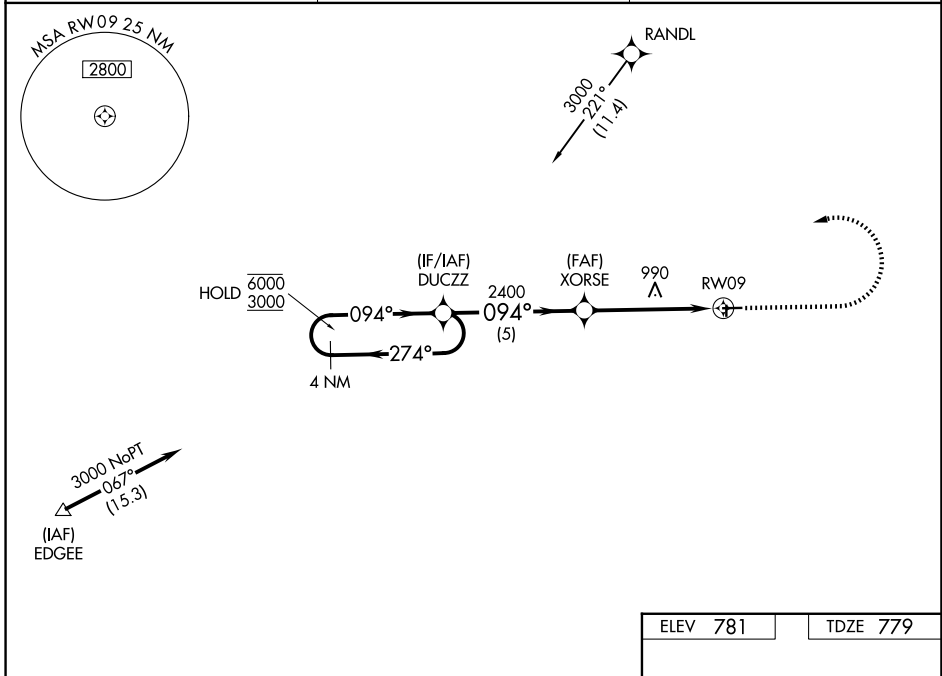


WAAS CH <b>93828</b> <b>W09A</b>	APP CRS <b>094°</b>	Rwy Ldg TDZE Apt Elev	<b>3882</b> <b>779</b> <b>781</b>
--	------------------------	-----------------------------	---

**RNAV (GPS) RWY 9**  
FULTON COUNTY (USE)

RNP APCH - GPS.	<p><b>▽</b> Rwy 9 helicopter visibility reduction below 1 SM NA. Circling NA to Rwys 18 and 36. For uncompensated Baro-VNAV systems, LNAV/VNAV NA below -16°C or above 54°C. Procedure NA at night.</p> <p><b>▲</b> MISSED APPROACH: Climb to 2100 then climbing left turn to 3000 direct DUCZZ and hold.</p>
-----------------	---

AWOS-3P <b>127.375</b>	TOLEDO APP CON <b>134.35 317.55</b>	UNICOM <b>123.0 (CTAF) 0</b>
---------------------------	--	---------------------------------



CATEGORY	A	B	C	D
LPV DA	1108-1		329 (400-1)	
LNAV/VNAV DA	1185-1½		406 (500-1½)	
LNAV MDA	1240-1	461 (500-1)	1240-1¾	461 (500-1¾)
CIRCLING	1280-1	499 (500-1)	1480-2	1480-2¼
			699 (700-2)	699 (700-2¼)

REIL Rwys 9 and 27 <b>0</b>
MIRL Rwy 9-27 <b>0</b>

EC-2, 11 JUN 2026 to 09 JUL 2026

EC-2, 11 JUN 2026 to 09 JUL 2026