

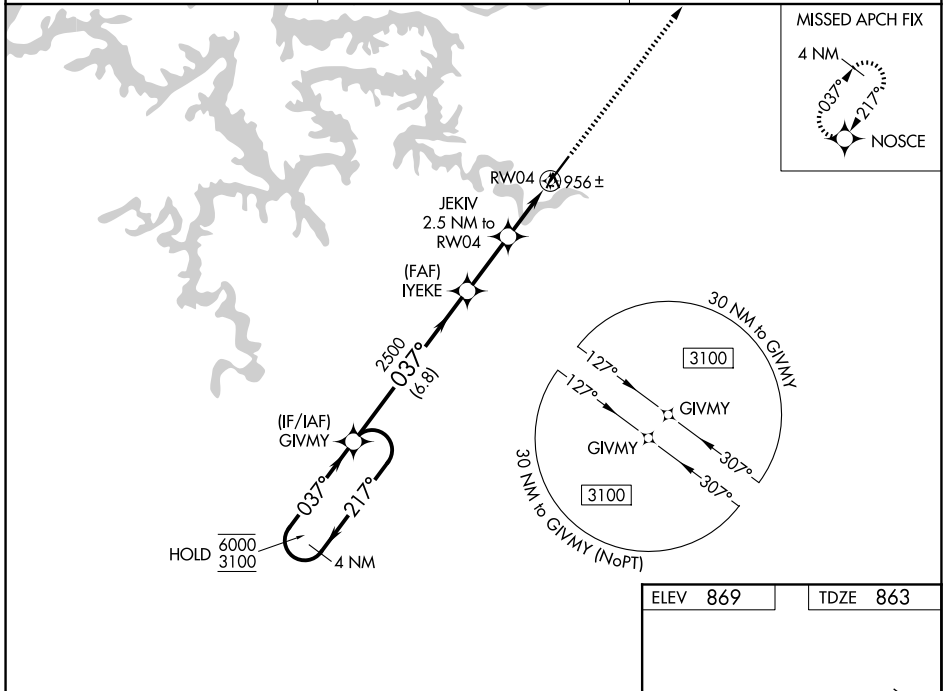
WAAS CH <b>65901</b> <b>W04A</b>	APP CRS <b>037°</b>	Rwy Ldg TDZE <b>863</b> Apt Elev <b>869</b>	<b>6497</b>
--	------------------------	---	-------------

# RNAV (GPS) RWY 4

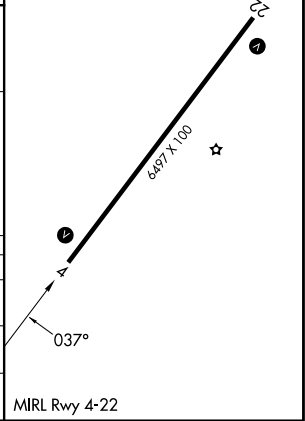
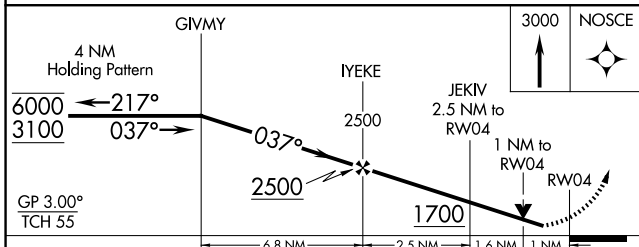
LEE C FINE MEML (AIZ)

RNP APCH - GPS.	<p><b>MISSED APPROACH:</b> Climb to 3000 direct NOSCE and hold.</p>
<p><b>⚠</b> Rwy 4 helicopter visibility reduction below 1 SM NA. For uncompensated Baro-VNAV systems, LNAV/VNAV NA below -16°C or above 54°C. Baro-VNAV and VDP NA when using OZS altimeter setting. When local altimeter setting not received, use OZS altimeter setting and increase LPV DA to 1204 feet. Increase LNAV/VNAV DA to 1163 feet and all visibilities ½ SM. Increase all MDAs 60 feet and LNAV visibility Cat C ½ SM.</p>	

AWOS-3PT <b>135.325</b>	MIZU APP CON <b>124.1 353.925</b>	UNICOM <b>122.8 (CTAF) 0</b>
----------------------------	--------------------------------------	---------------------------------



ELEV 869	TDZE 863
----------	----------



CATEGORY	A	B	C	D
LPV DA	1155-1	292 (300-1)		NA
LNAV/VNAV DA	1114-1	251 (300-1)		NA
LNAV MDA	1220-1	357 (400-1)		NA

NC-3, 11 JUN 2026 to 09 JUL 2026

NC-3, 11 JUN 2026 to 09 JUL 2026