

WAAS CH <b>82403</b> <b>W14A</b>	APP CRS <b>138°</b>	Rwy Ldg TDZE Apt Elev	<b>4650</b> <b>1204</b> <b>1204</b>
--	------------------------	-----------------------------	---

# RNAV (GPS) RWY 14

FREMONT MUNI (F'ET)

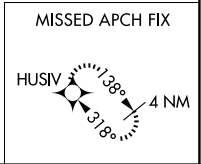
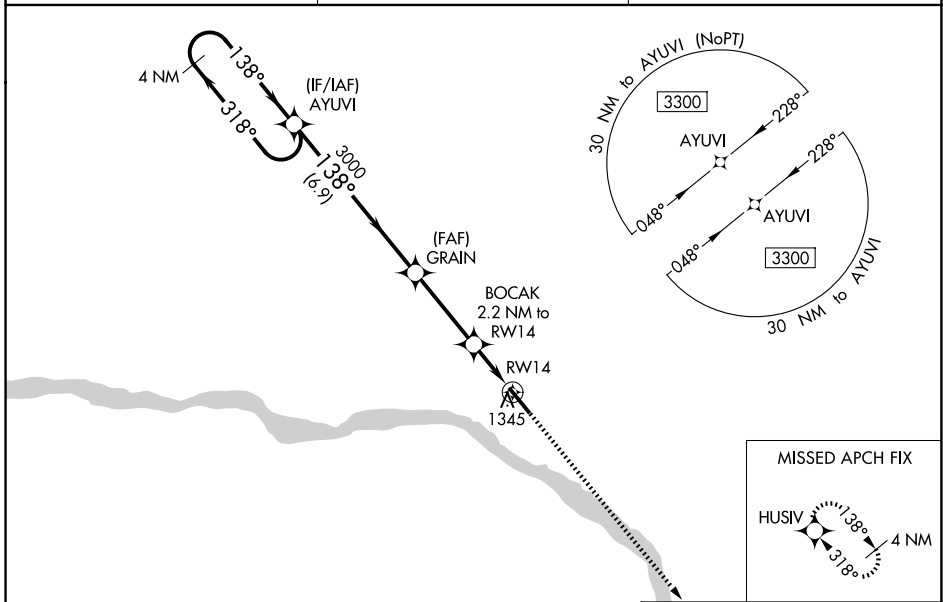
**⚠** For uncompensated Baro-VNAV systems, LNAV/VNAV NA below -17°C (2°F) or above 54°C (130°F). DME/DME RNP-0.3 NA. Helicopter visibility reduction below 1 SM NA. When local altimeter setting not received, use Blair altimeter setting and increase all DA/MDA 60 feet; increase LNAV/VNAV all Cats visibility 1/8 mile, and LNAV Cat C visibility 1/4 mile. Baro-VNAV and VDP NA when using Blair altimeter setting.

**MISSED APPROACH:**  
Climb to 3800 direct HUSIV and hold.

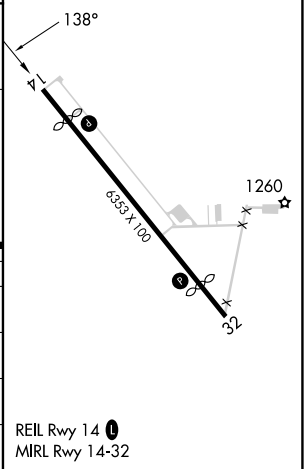
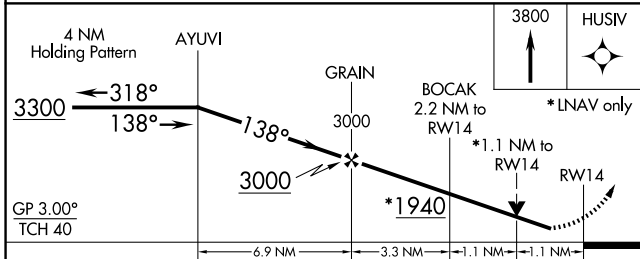
AWOS-3  
**121.275**

OMAHA APP CON  
**135.875 354.05**

UNICOM  
**122.8 (CTAF) 0**



ELEV 1204 **D** TDZE 1204



CATEGORY	A	B	C	D
LPV DA	1454-1	250 (300-1)		NA
LNAV/VNAV DA	1496-1	292 (300-1)		NA
LNAV MDA	1600-1	396 (400-1)	1600-1/8 396 (400-1/8)	NA
CIRCLING	1760-1	556 (600-1)	2020-2 1/2 816 (900-2 1/2)	NA

NC-2, 11 JUN 2026 to 09 JUL 2026

NC-2, 11 JUN 2026 to 09 JUL 2026