

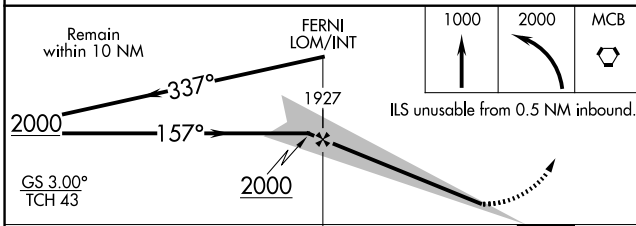
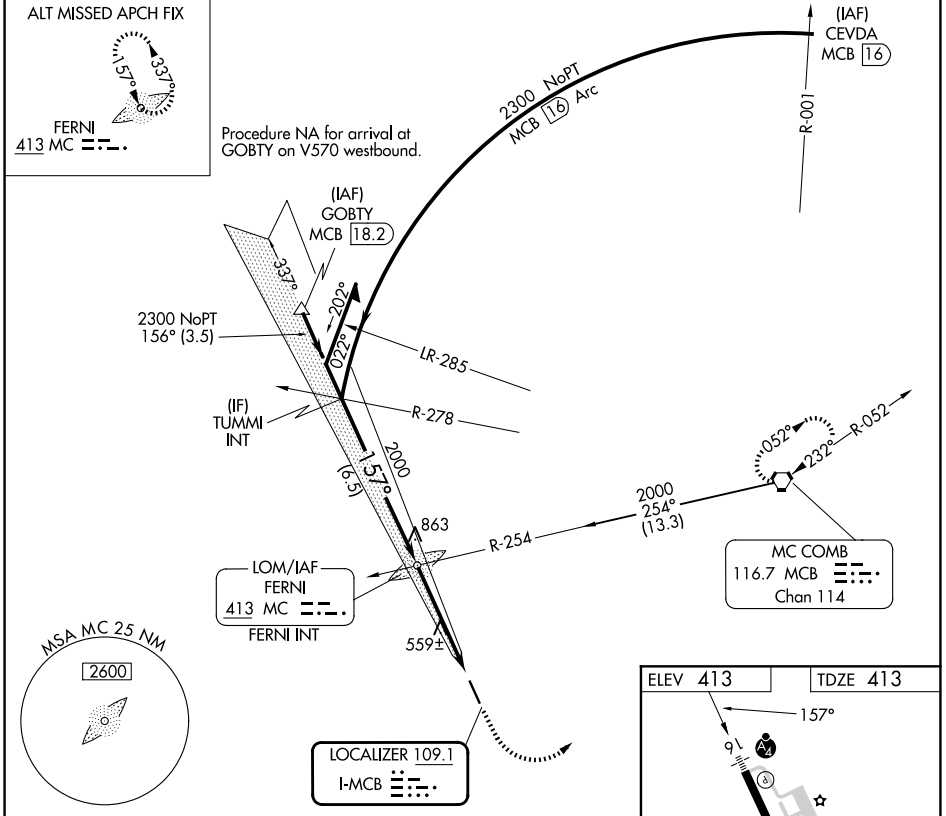
LOC I-MCB 109.1	APP CRS 157°	Rwy Ldg 5000
		TDZE 413
		Apt Elev 413

ILS or LOC RWY 16

MC COMB/PIKE COUNTY/JOHN E LEWIS FLD (MCB)

<p>Inop table does not apply to S-ILS 16 all Cats and S-LOC 16 Cats C and D.</p>	<p>MALS F</p>	<p>MISSED APPROACH: Climb to 1000 then climbing left turn to 2000 direct MCB VORTAC and hold.</p>

ASOS 119.025	HOUSTON CENTER 126.8 327.8	UNICOM 123.05 (CTAF) 0
------------------------	--------------------------------------	----------------------------------



ELEV 413	TDZE 413
157°	
91	34
500 X 100	0.5 NM UP
MIRL Rwy 16-34 0	
FAF to MAP 4.1 NM	
Knots	60 90 120 150 180
Min:Sec	4:06 2:44 2:03 1:38 1:22

CATEGORY	A	B	C	D
S-ILS 16	632-3/4		219 (300-3/4)	
S-LOC 16	820-3/4	407 (500-3/4)	820-1/4	407 (500-1/4)
CIRCLING	880-1	467 (500-1)	940-1/2	1160-2/2
			527 (600-1/2)	747 (800-2/2)

SC-4, 11 JUN 2026 to 09 JUL 2026

SC-4, 11 JUN 2026 to 09 JUL 2026