

LOC/DME I-RBW 110.15 Chan 38 (Y)	APP CRS 229°	Rwy Ldg TDZE Apt Elev	5977 101 101
---	------------------------	-----------------------------	---

ILS Y or LOC Y RWY 23

LOWCOUNTRY RGNL (R.BW)

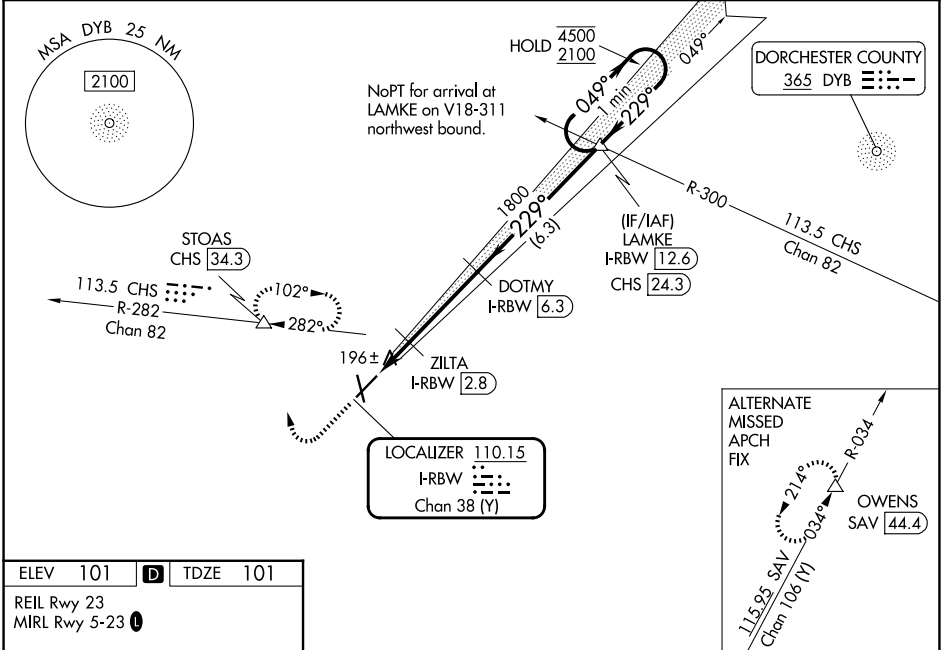
DME required.

▼
▲ Rwy 23 helicopter visibility reduction below ¾ SM NA. Inop table does not apply to S-LOC 23 all Cats.

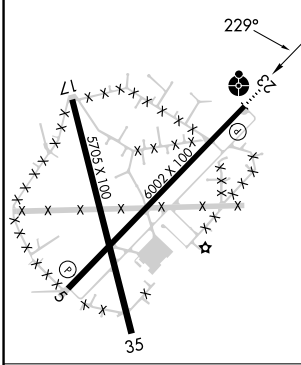
ODALS

MISSED APPROACH: Climb to 700 then climbing right turn to 2000 on heading 360° and CHS VORTAC R-282 to STOAS/CHS VORTAC 34.3 DME and hold, continue climb-in-hold to 2000, or as directed by ATC.

AWOS-3PT 118.725	CHARLESTON APP CON 120.7 306.925	UNICOM 122.8 (CTAF)
----------------------------	--	-------------------------------



ELEV 101	D	TDZE 101
REIL Rwy 23		MIRL Rwy 5-23



700	2000	STOAS	VGSI and ILS glidepath not coincident (VGSI Angle 3.00/TCH 46).
↑	hdg 360°	CHS R-282	
		ZILTA I-RBW 2.8	LAMKE I-RBW 12.6
		DOTMY I-RBW 6.3	
		I-RBW 1.1	I-RBW 2.1
		680	1800
		1800	4500
		1800	2100
		1 NM	0.7 3.5 NM 6.3 NM
			GS 3.00° TCH 43

FAF to MAP 5.2 NM					
Knots	60	90	120	150	180
Min:Sec	5:12	3:28	2:36	2:05	1:44

CATEGORY	A	B	C	D
S-ILS 23	301-¾ 200 (200-¾)			
S-LOC 23	460-¾	359 (400-¾)	460-⅞	359 (400-⅞)
CIRCLING	620-1	519 (600-1)	700-1½	700-2
			599 (600-1½)	599 (600-2)

SE-2, 11 JUN 2026 to 09 JUL 2026

SE-2, 11 JUN 2026 to 09 JUL 2026