

APP CRS 011°	Rwy Ldg TDZE Apt Elev	N/A N/A 5
------------------------	-----------------------------	--------------------------------------

RNAV (GPS)-B

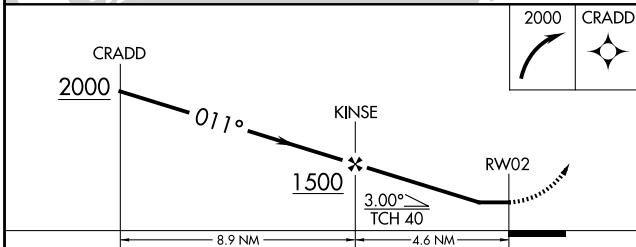
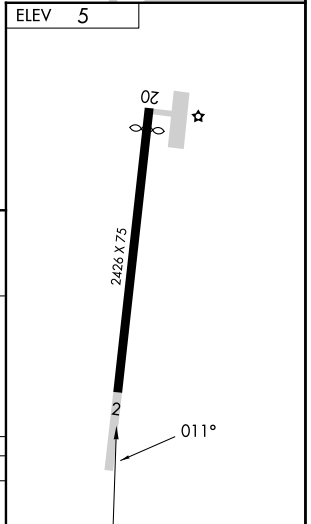
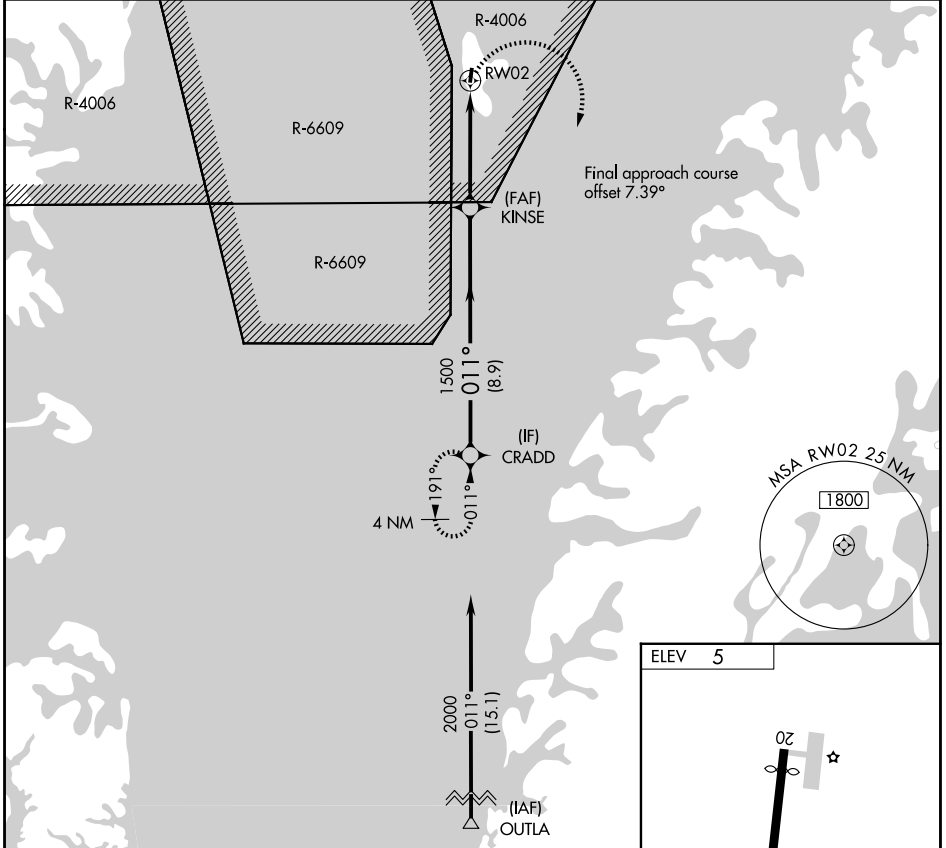
TANGIER ISLAND (TGI)

RNP APCH - GPS.

▼ Specific clearance from Patuxent App Con required before proceeding northbound from CRADD. Approach is within R-6609 and underlies R-4006. Procedure NA at night.

MISSED APPROACH:
Climbing right turn to 2000
direct CRADD and hold.

AWOS-3 119.8	PATUXENT APP CON ★ 121.0 250.3	UNICOM 122.8 (CTAF)
------------------------	--	-------------------------------



CATEGORY	A	B	C	D
CIRCLING	560-1	555 (600-1)	NA	

NE-3, 11 JUN 2026 to 09 JUL 2026

NE-3, 11 JUN 2026 to 09 JUL 2026