

WAAS CH 86618 W13A	APP CRS 134°	Rwy Idg TDZE Apt Elev	6000 130 130
--	------------------------	-----------------------------	---

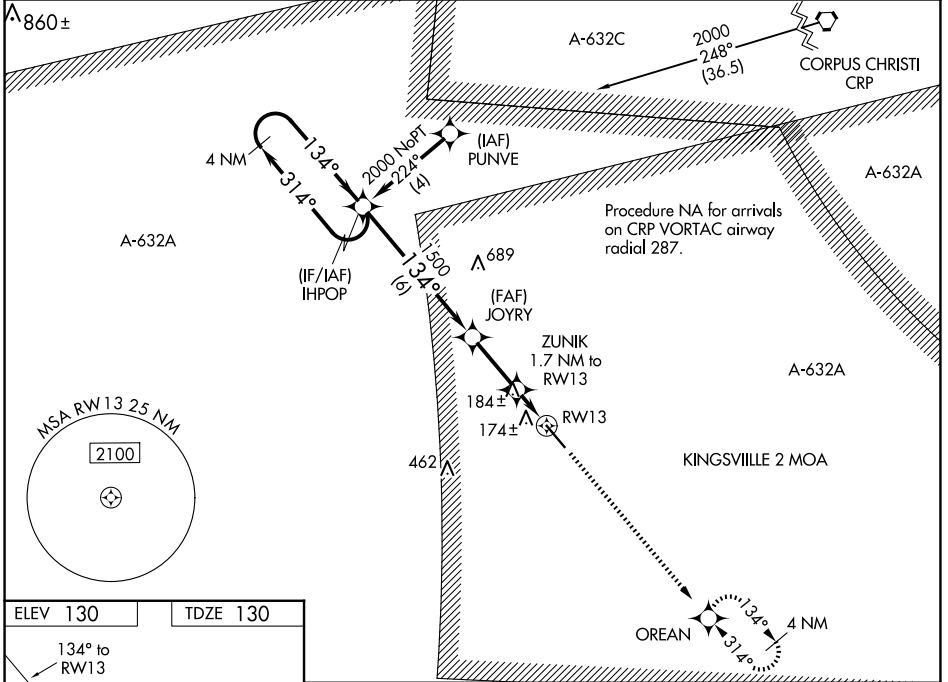
RNAV (GPS) RWY 13

KLEBERG COUNTY (IKG)

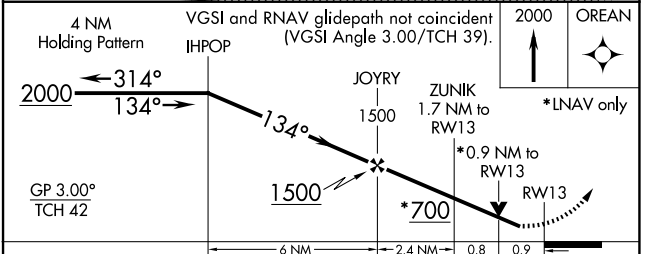
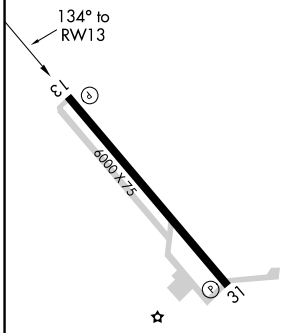
NA For uncompensated Baro-VNAV systems, LNAV/VNAV NA below -15°C (5°F) or above 48°C (118°F). DME/DME RNP-0.3 NA. Visibility reduction by helicopters NA. When local altimeter setting not received, use Alice altimeter setting and increase all DA 33 feet and all MDA 40 feet and LPV all Cats, LNAV/VNAV all Cats, and LNAV Cat D visibility ¼ mile. Baro-VNAV and VDP NA when using Alice altimeter setting.

MISSED APPROACH: Climb to 2000 direct OREAN and hold.

AWOS-3P 119.075	KINGSVILLE APP CON * 119.9 290.45	UNICOM 122.7 (CTAF)
---------------------------	---	-------------------------------



ELEV 130	TDZE 130
-----------------	-----------------



CATEGORY	A	B	C	D
LPV DA		380-¾	250 (300-¾)	
LNAV/VNAV DA		444-1	314 (400-1)	
LNAV MDA		440-1	310 (400-1)	
CIRCLING	500-1	580-1	580-1½	680-2
	370 (400-1)	450 (500-1)	450 (500-1½)	550 (600-2)

REIL Rwy 13 and 31 **1**
MIRL Rwy 13-31 **1**

SC-3, 11 JUN 2026 to 09 JUL 2026