

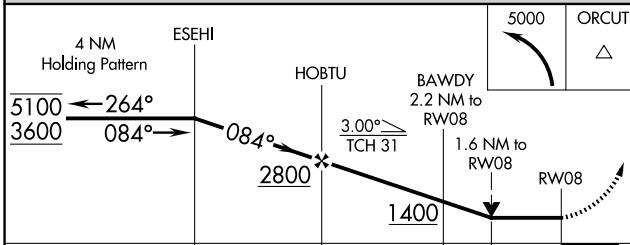
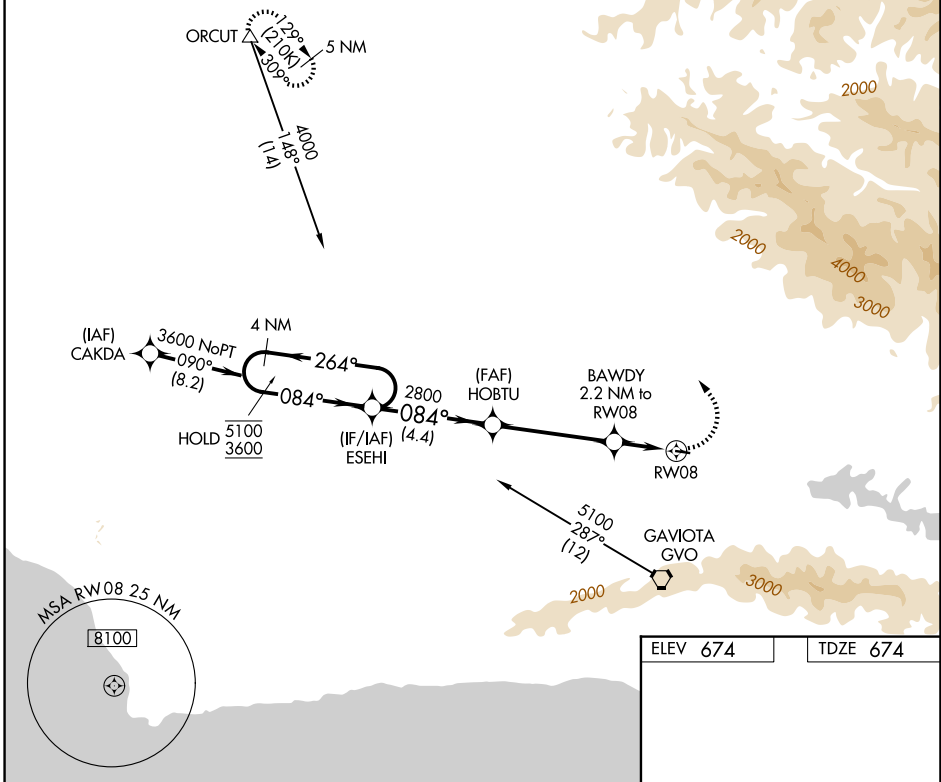
APP CRS	Rwy Ldg	<b>2803</b>
<b>084°</b>	TDZE	<b>674</b>
	Apt Elev	<b>674</b>

# RNAV (GPS) RWY 8

SANTA YNEZ/KUNKLE FLD (IZA)

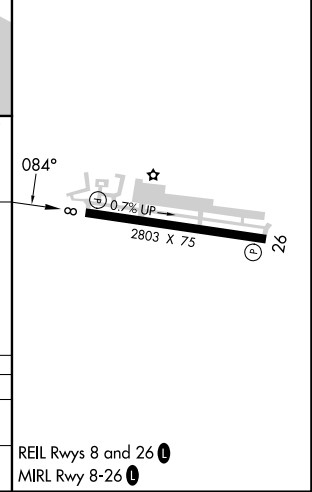
RNP APCH-GPS.	MISSED APPROACH: Climbing left turn to 5000 direct ORCUT and hold.
<p>▼ Rwy 8 helicopter visibility reduction below 3/4 SM NA.</p> <p>▲ Circling Rwy 8 NA at night.</p>	

AWOS-3PT <b>118.075</b>	SANTA BARBARA APP CON* <b>124.15 327.8</b>	UNICOM <b>122.8 (CTAF) 0</b>
----------------------------	---	---------------------------------



ELEV 674	TDZE 674
----------	----------

CATEGORY	A	B	C	D
RNAV MDA	1180-1	506 (600-1)		NA
CIRCLING	1220-1 546 (600-1)	1340-1 666 (700-1)		NA



SW-3, 11 JUN 2026 to 09 JUL 2026

SW-3, 11 JUN 2026 to 09 JUL 2026