




APP CRS **096°**  
 Rwy Ldg **5506**  
 TDZE **385**  
 Apt Elev **385**

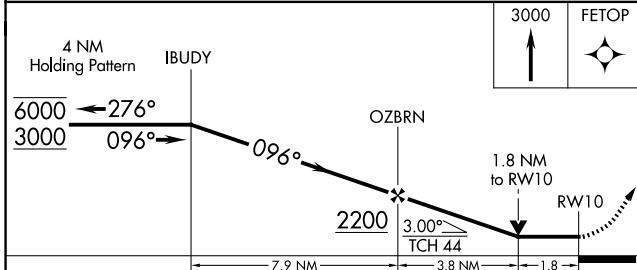
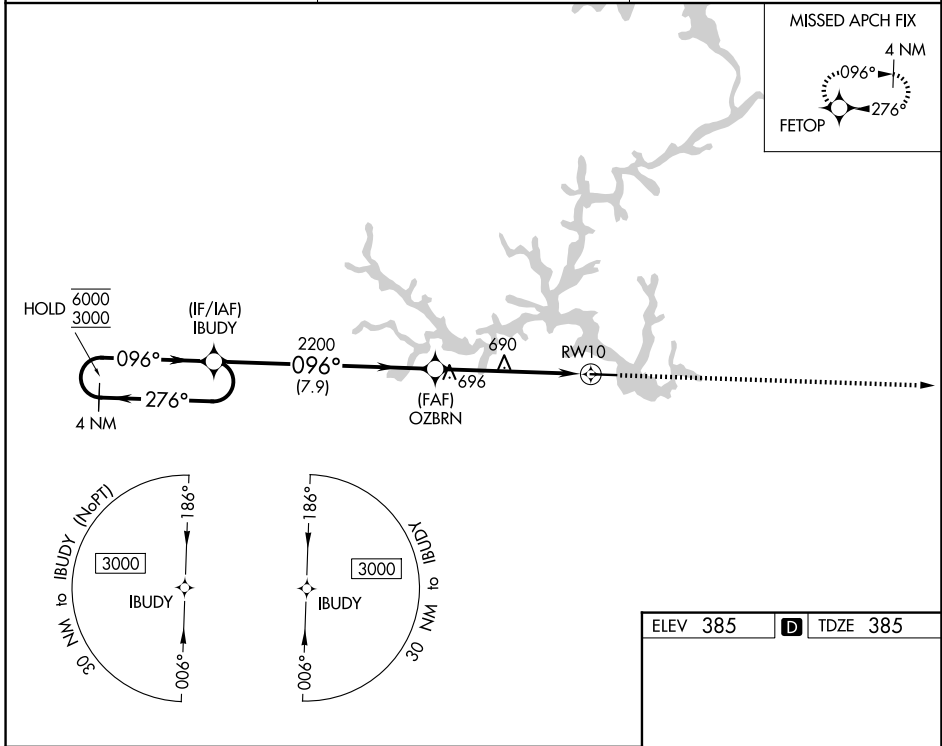
# RNAV (GPS) RWY 10

BALDWIN COUNTY RGNL (MLJ)

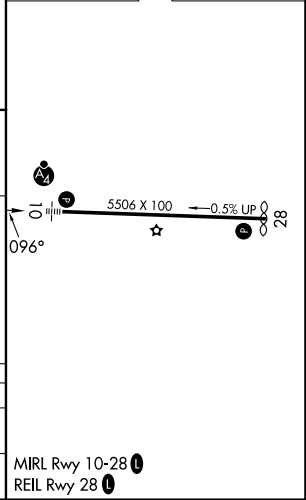
RNP APCH - GPS. MALSF 

 Rwy 10 helicopter visibility reduction below 3/4 SM NA. MISSED APPROACH: Climb to 3000 direct FETOP and hold.

AWOS-3 **120.925** ATLANTA APP CON **124.2 279.6** UNICOM **122.975** (CTAF) 



ELEV 385 D TDZE 385



CATEGORY	A	B	C	D
LNVA MDA	1000-1	615 (700-1)	1000-1½	615 (700-1½)
CIRCLING	1000-1	615 (700-1)	1080-2 695 (700-2)	1280-3 895 (900-3)

SE-4, 11 JUN 2026 to 09 JUL 2026

SE-4, 11 JUN 2026 to 09 JUL 2026