

APP CRS	Rwy Ldg	5646
090°	TDZE	590
	Apt Elev	590

RNAV (GPS) RWY 9

ERIE-OTTAWA INTL (PCW)

RNP APCH - GPS.

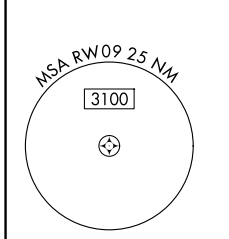
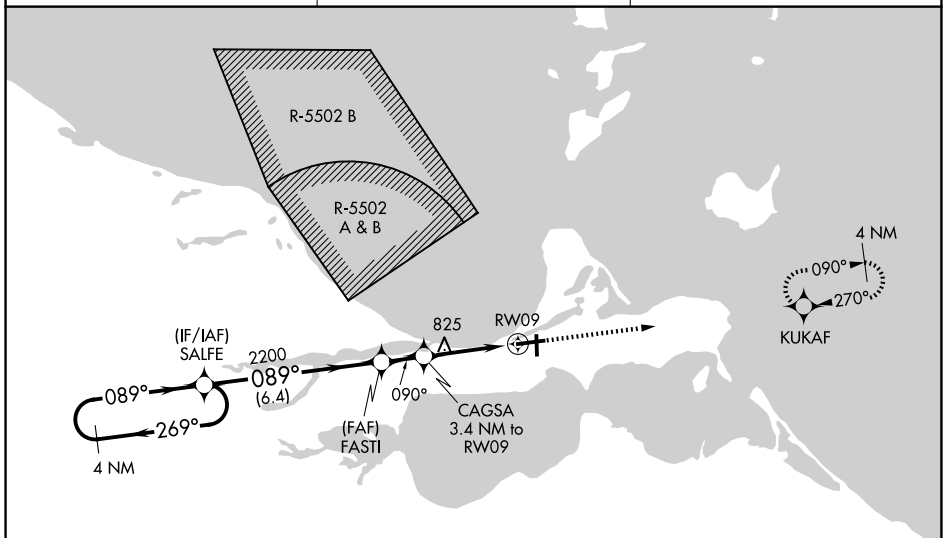
⚠ When local altimeter setting not received, use Toledo Executive altimeter setting and increase all MDA 80 feet and all Cat C/D visibilities ¼ mile. Rwy 9 helicopter visibility reduction below ¾ SM NA. Circling Rwy 18, 36 NA at night.

MISSED APPROACH:
Climb to 2500 direct KUKAF and hold.

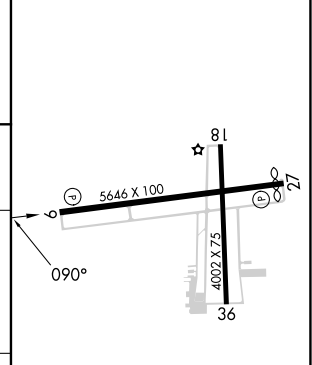
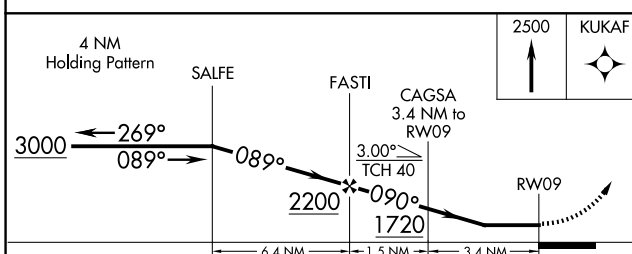
AWOS-3
118.775

CLEVELAND APP CON
126.35 346.325

UNICOM
122.8 (CTAF) 0



ELEV 590	TDZE 590
----------	----------



CATEGORY	A	B	C	D
RNAV MDA	1140-1	550 (600-1)	1140-1½	550 (600-1½)
CIRCLING	1140-1	550 (600-1)	1180-1½ 590 (600-1½)	1580-3 990 (1000-3)

HIRL Rwy 9-27 0
MIRL Rwy 18-36 0
REIL Rws 9 and 27 0

EC-2, 11 JUN 2026 to 09 JUL 2026

EC-2, 11 JUN 2026 to 09 JUL 2026