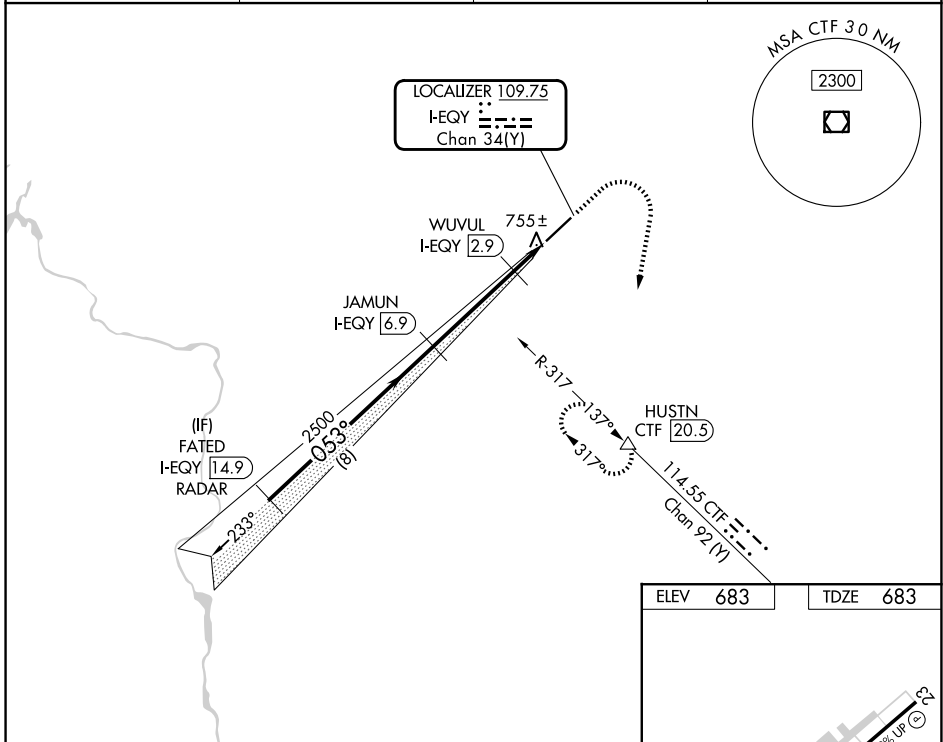


LOC/DME I-EQY <b>109.75</b> Chan <b>34(Y)</b>	APP CRS <b>053°</b>	Rwy Ldg TDZE Apt Elev	<b>7001</b> <b>683</b> <b>683</b>
---	------------------------	-----------------------------	---

**ILS or LOC RWY 5**  
CHARLOTTE/MONROE EXEC (EQY)

DME required. RADAR required for procedure entry.		MALSR 	MISSED APPROACH: Climb to 1180 then climbing right turn to 3000 on heading 196° and CTF VOR/DME R-317 to HUSTN/CTF 20.5 DME and hold, continue climb-in-hold to 3000.
	Rwy 5 helicopter visibility reduction below 3/4 SM NA. Inop table does not apply to S-ILS 5 all Cats. For inop ALS, increase S-LOC 5 all Cats visibility to 1 SM.		

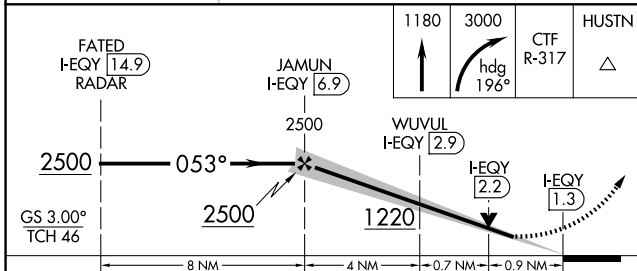
ASOS <b>135.775</b>	CHARLOTTE APP CON <b>120.05 307.8</b>	CLNC DEL <b>132.55</b>	UNICOM <b>122.7 (CTAF)</b>
------------------------	--	---------------------------	-------------------------------



SE-2, 11 JUN 2026 to 09 JUL 2026

SE-2, 11 JUN 2026 to 09 JUL 2026

ELEV 683	TDZE 683
----------	----------



CATEGORY	A	B	C	D
S-ILS 5		933-3/4	250 (300-3/4)	
S-LOC 5		1020-3/4	337 (400-3/4)	
CIRCLING	1220-1	537 (600-1)	1220-1 1/2 537 (600-1 1/2)	1480-2 1/2 797 (800-2 1/2)

