

APP CRS	Rwy Ldg	6000
055°	TDZE	671
	Apt Elev	681

RNAV (GPS) RWY 6

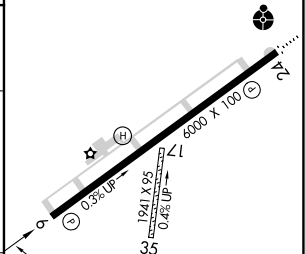
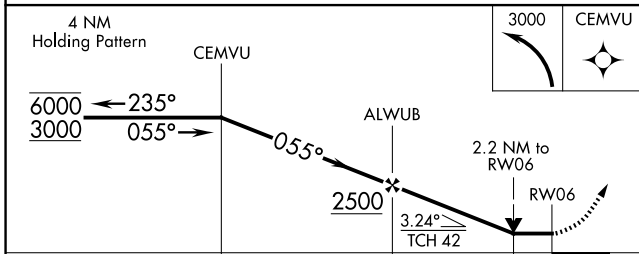
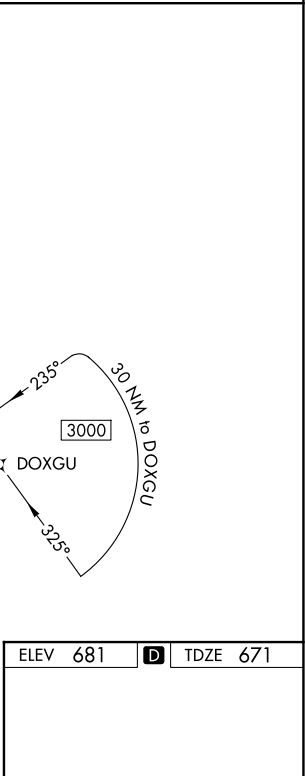
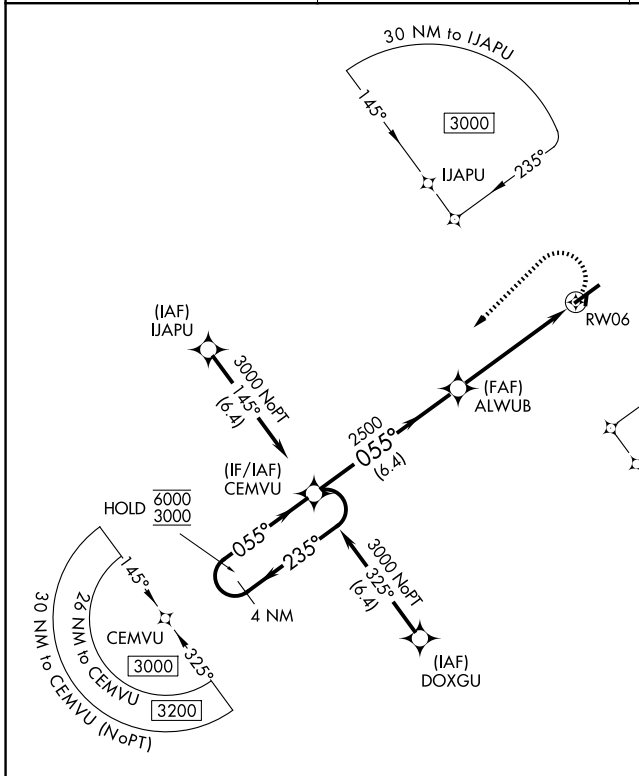
MAURY COUNTY RGNL (MRC)

RNP APCH - GPS.

▼ Rwy 6 helicopter visibility reduction below 3/4 SM NA. Circling NA to Rwy 17 and 35. VDP NA when using BNA altimeter setting. When local altimeter setting not received, use BNA altimeter setting and increase all MDAs 120 feet and LNAV visibility Cat A 1/4 SM, and Circling visibility Cats A/C 1/4 SM.

▲ MISSED APPROACH: Climbing left turn to 3000 direct CEMVU and hold.

AWOS-3 128.625	MEMPHIS CENTER 125.85 379.25	UNICOM 122.8 (CTAF) 0
--------------------------	----------------------------------------	---------------------------------



CATEGORY	A	B	C	D
LNAV MDA	1460-1 789 (800-1)	1460-1 1/4 789 (800-1 1/4)	1460-2 1/2	789 (800-2 1/2)
CIRCLING	1460-1 779 (800-1)	1460-1 1/4 779 (800-1 1/4)	1460-2 1/2 779 (800-2 1/2)	1620-3 939 (1000-3)

MIRL Rwy 6-24
REIL Rwy 6
REIL Rwy 24 0

SE-1, 11 JUN 2026 to 09 JUL 2026

SE-1, 11 JUN 2026 to 09 JUL 2026