

| | | | |
|--|------------------------|-----------------------------|---|
| WAAS CH 48835 W31A | APP CRS 306° | Rwy Ldg TDZE Apt Elev | 6143 4940 4970 |
|--|------------------------|-----------------------------|---|

RNAV (GPS) RWY 31

JOHNSON COUNTY (BYG)

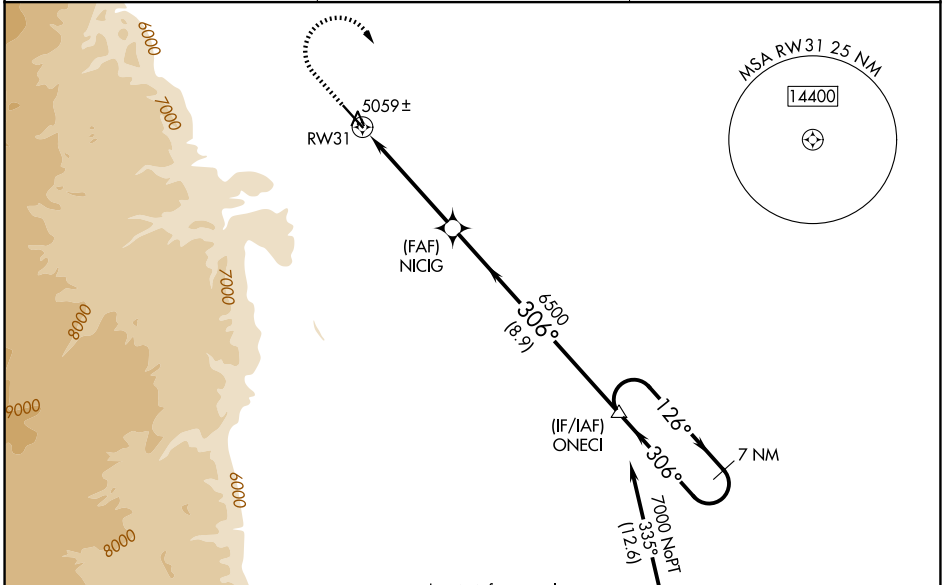
⚠ When Rwy 13 VGSi inop, Circling Rwy 13 NA at night. Baro-VNAV and VDP NA when using Sheridan altimeter setting. For uncompensated Baro-VNAV systems, LNAV/VNAV NA below -27°C (-16°F) or above 48°C (120°F). Circling NA southwest of Rwy 13-31. DME/DME RNP-0.3 NA. When local altimeter setting not received, use Sheridan altimeter setting and increase all DA/MDA 200 feet; increase all LPV, LNAV/VNAV, and all LNAV and Circling Cat C/D visibilities ¾ mile.

MISSED APPROACH: Climb to 6000, then climbing right turn to 7000 direct ONECI and hold.

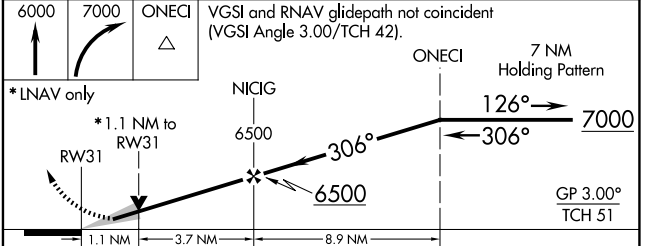
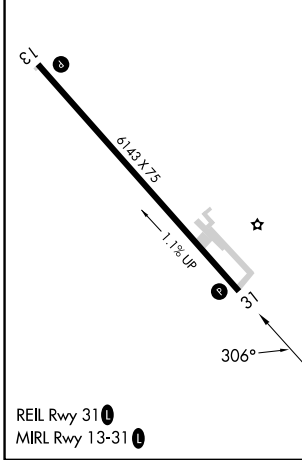
ASOS
135.425

SALT LAKE CENTER
127.75 351.9

UNICOM
122.8 (CTAF) 0



| | |
|-----------|-----------|
| ELEV 4970 | TDZE 4940 |
|-----------|-----------|



| CATEGORY | A | B | C | D |
|--------------|--------|-------------|-------------------------|-----------------------|
| LPV DA | | 5190-¾ | 250 (300-¾) | |
| LNAV/VNAV DA | | 5275-1⅛ | 335 (400-1⅛) | |
| LNAV MDA | 5320-1 | 380 (400-1) | 5320-1⅛ | 380 (400-1⅛) |
| CIRCLING | 5440-1 | 470 (500-1) | 5460-1½ 490 (500-1½) | 5600-2 630 (700-2) |

NW-1, 11 JUN 2026 to 09 JUL 2026

NW-1, 11 JUN 2026 to 09 JUL 2026