

APP CRS **180°**
 Rwy Idg **7004**
 TDZE **126**
 Apt Elev **126**

RNAV (GPS) RWY 18
 INDIANOLA MUNI (IDL)

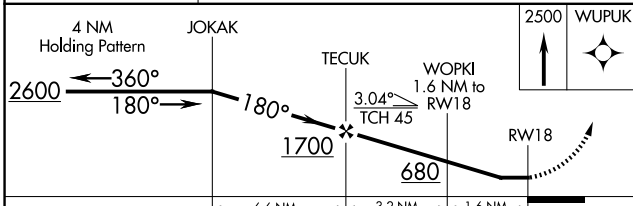
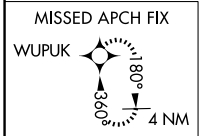
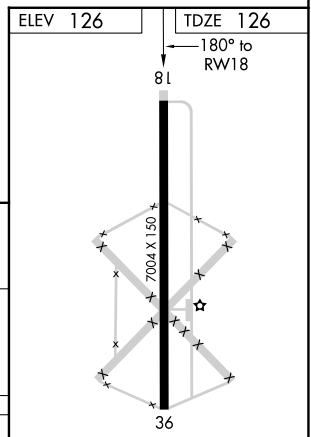
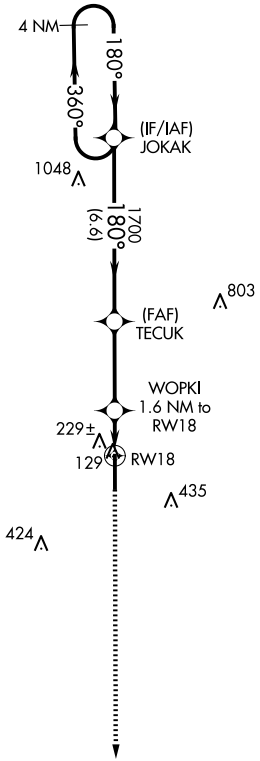
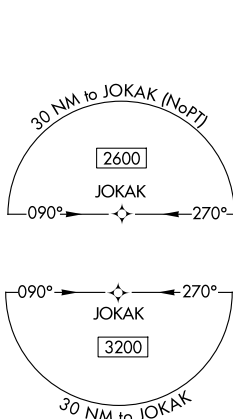
▽ DME/DME RNP-0.3 NA. Rwy 18 helicopter visibility reduction below 1 SM NA.
△NA Straight-in/Circling to Rwy 18 NA at night. Use Greenville altimeter setting, when not received, use Greenwood altimeter setting and increase all MDA 40 feet, increase LNAV Cat C/D visibility 1/8 SM and Circling Cat C/D visibility 1/4 SM.

MISSED APPROACH: Climb to 2500 direct WUPUK and hold.

GLH ASOS **125.525**

MEMPHIS CENTER **135.875 269.35**

UNICOM **122.8 (CTAF) 0**



CATEGORY	A	B	C	D
LNAV MDA	520-1	394 (400-1)	520-1 1/8	394 (400-1 1/8)
CIRCLING	580-1 454 (500-1)	600-1 474 (500-1)	840-2 714 (800-2)	840-2 1/4 714 (800-2 1/4)

MRL Rwy 18-36 0

SC-4, 11 JUN 2026 to 09 JUL 2026

SC-4, 11 JUN 2026 to 09 JUL 2026