

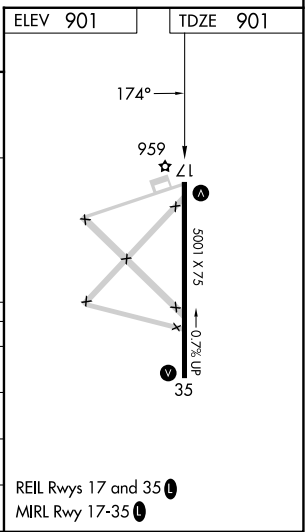
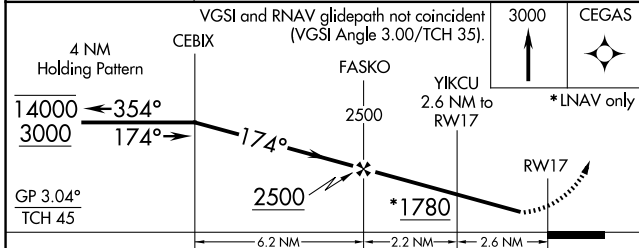
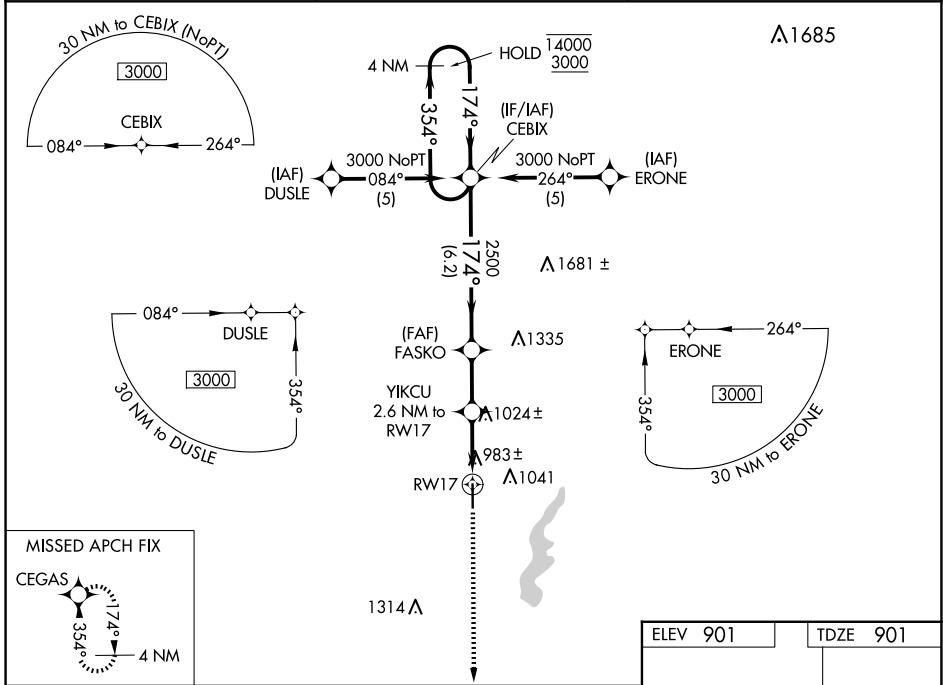
WAAS CH 86508 W17A	APP CRS 174°	Rwy Idg TDZE Apt Elev	5001 901 901
--	------------------------	-----------------------------	---

RNAV (GPS) RWY 17

TRI-CITY (PPF')

RNP APCH.	MISSED APPROACH: Climb to 3000 direct CEGAS and hold.
<p>▼ Procedure NA at night. Rwy 17 helicopter visibility reduction below 1 SM NA. For uncompensated Baro-VNAV systems, procedure NA below -16°C or above 54°C.</p> <p>▲</p>	

ASOS 118.175	KANSAS CITY CENTER 128.6 282.325	UNICOM 123.0 (CTAF)
------------------------	--	-------------------------------



CATEGORY	A	B	C	D
LPV DA	1194-1	293 (300-1)		NA
LNAV/VNAV DA	1256-1¼	355 (400-1¼)		NA
LNAV MDA	1360-1	459 (500-1)	1360-1⅜ 459 (500-1⅜)	NA
CIRCLING	1420-1 519 (600-1)	1440-1 539 (600-1)	1440-1½ 539 (600-1½)	NA

NC-2, 11 JUN 2026 to 09 JUL 2026

NC-2, 11 JUN 2026 to 09 JUL 2026