

WAAS CH 72704 W13A	APP CRS 133°	Rwy Ldg TDZE Apt Elev	4300 896 897
---------------------------------	------------------------	-----------------------------	---

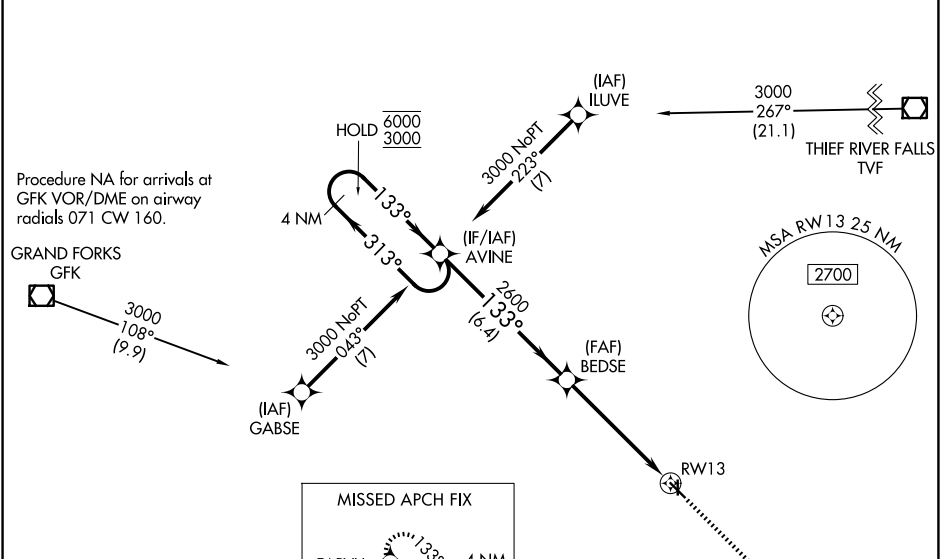
RNAV (GPS) RWY 13
CROOKSTON MUNI/KIRKWOOD FLD (CKN)

RNP APCH - GPS.

⚠ For uncompensated Baro-VNAV systems, LNAV/VNAV NA below -16°C or above 54°C. Circling NA to Rwy 17 and 35. Baro-VNAV and VDP NA when using GFK altimeter setting. When local altimeter setting not received, use GFK altimeter setting and increase LPV DA to 1159 feet. Increase LNAV/VNAV DA to 1347 feet and all visibilities ¼ SM. Increase all MDAs 80 feet and LNAV visibility Cat C ½ SM, and Circling visibility Cat C ¼ SM.

MISSED APPROACH: Climb to 3000 direct FAPVU and hold.

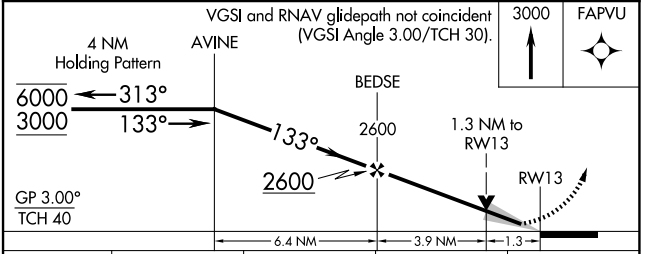
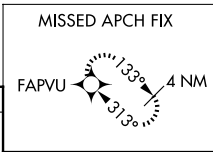
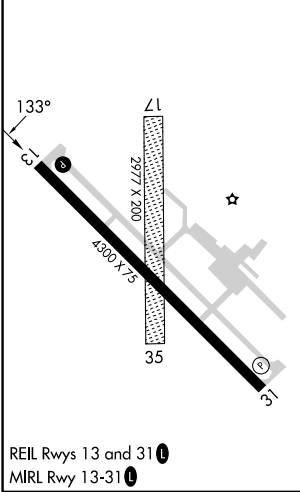
AWOS-3 126.425	GRAND FORKS APP CON* 118.1 318.1	UNICOM 122.7 (CTAF) 0
--------------------------	--	---------------------------------



NC-1, 11 JUN 2026 to 09 JUL 2026

NC-1, 11 JUN 2026 to 09 JUL 2026

ELEV 897	TDZE 896
----------	----------



CATEGORY	A	B	C	D
LPV DA	1096-1 200 (200-1)			NA
LNAV/VNAV DA	1284-1½ 388 (400-1½)			NA
LNAV MDA	1340-1	444 (500-1)	1340-1¾ 444 (500-1¾)	NA
CIRCLING	1340-1 443 (500-1)	1360-1 463 (500-1)	1480-1½ 583 (600-1½)	NA