

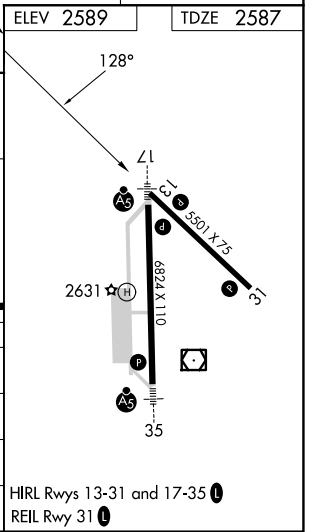
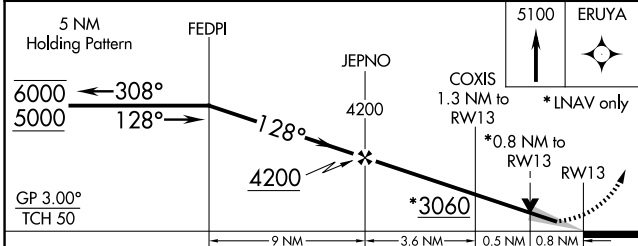
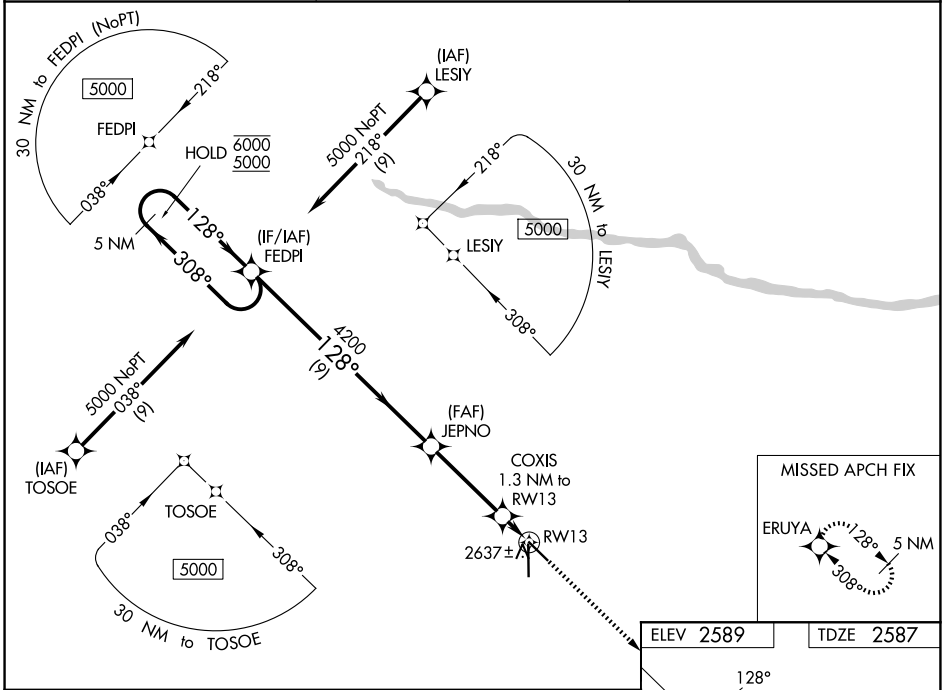
WAAS CH 99706 W13A	APP CRS 128°	Rwy Ldg TDZE Apt Elev	5501 2587 2589
--	------------------------	-----------------------------	---

RNAV (GPS) RWY 13

AINSWORTH RGNL (A.N.W)

RNP APCH.	MISSED APPROACH: Climb to 5100 direct ERUYA and hold, continue climb-in-hold to 5100.
<p>▼ For uncompensated Baro-VNAV systems, LNAV/VNAV NA below -20°C or above 54°C.</p> <p>▲</p>	

AWOS-3 118.325	DENVER CENTER 127.95 338.2	UNICOM 122.8 (CTAF) ①
--------------------------	--------------------------------------	---------------------------------



CATEGORY	A	B	C	D
LPV DA		2787-1	200 (200-1)	
LNAV/VNAV DA		2837-1	250 (300-1)	
LNAV MDA		2900-1	313 (400-1)	
CIRCLING	3000-1 411 (500-1)	3040-1 451 (500-1)	3040-1½ 451 (500-1½)	3200-2 611 (700-2)

HIRL Rwy 13-31 and 17-35 ①
REIL Rwy 31 ①

NC-2, 11 JUN 2026 to 09 JUL 2026

NC-2, 11 JUN 2026 to 09 JUL 2026