

WAAS CH 48923 W14A	APP CRS 143°	Rwy Ldg 5001 TDZE 23 Apt Elev 23
--	------------------------	---

RNAV (GPS) RWY 14

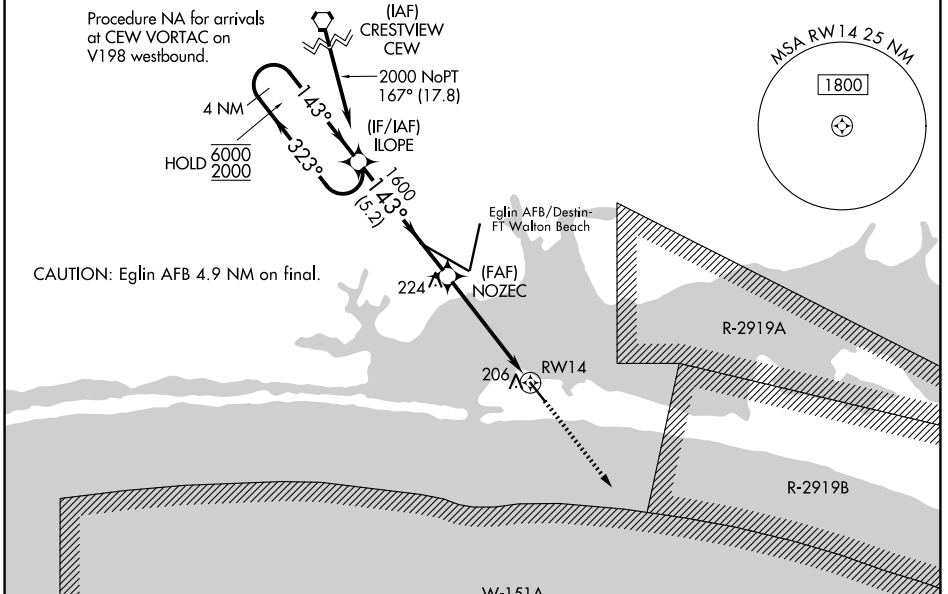
DESTIN EXEC (DTS)

RNP APCH - GPS.

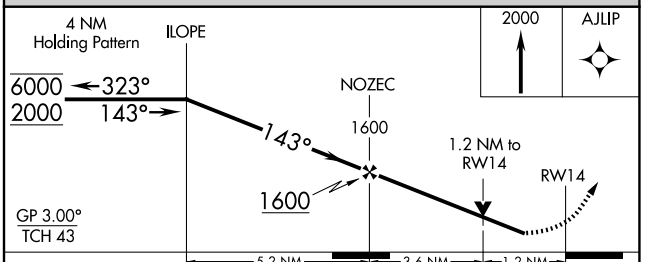
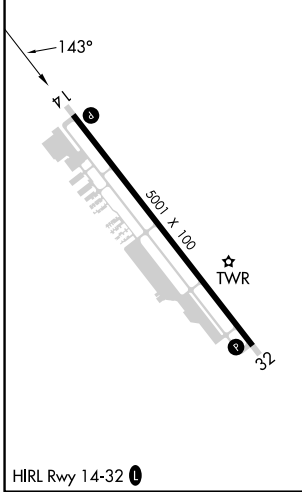
⚠ Baro-VNAV and VDP NA when using CEW altimeter setting. Rwy 14 helicopter visibility reduction below ¼ SM NA. For uncompensated Baro-VNAV systems, LNAV/VNAV NA below 0°C or above 54°C. When local altimeter setting not received, use CEW altimeter setting: increase LPV DA to 353 feet; increase LNAV/VNAV DA to 447 feet and all visibilities ½ SM; increase all MDAs 80 feet and LNAV visibility Cats C and D ½ SM, and Circling visibility Cats C and D ½ SM.

MISSED APPROACH:
Climb to 2000 direct
AJLIP and hold.

ATIS 133.925	EGLIN APP CON 132.1 360.6	DESTIN TOWER ★ 118.45 (CTAF) 0	GND CON 121.6
------------------------	-------------------------------------	--	-------------------------



ELEV 23	TDZE 23
---------	---------



CATEGORY	A	B	C	D
LPV DA	273-1 250 (300-1)			
LNAV/VNAV DA	367-1½ 344 (400-1½)			
LNAV MDA	460-1	437 (500-1)	460-1¼	437 (500-1¼)
CIRCLING	580-1 557 (600-1)		680-1¾ 657 (700-1¾)	680-2 657 (700-2)

SE-3, 11 JUN 2026 to 09 JUL 2026

SE-3, 11 JUN 2026 to 09 JUL 2026