

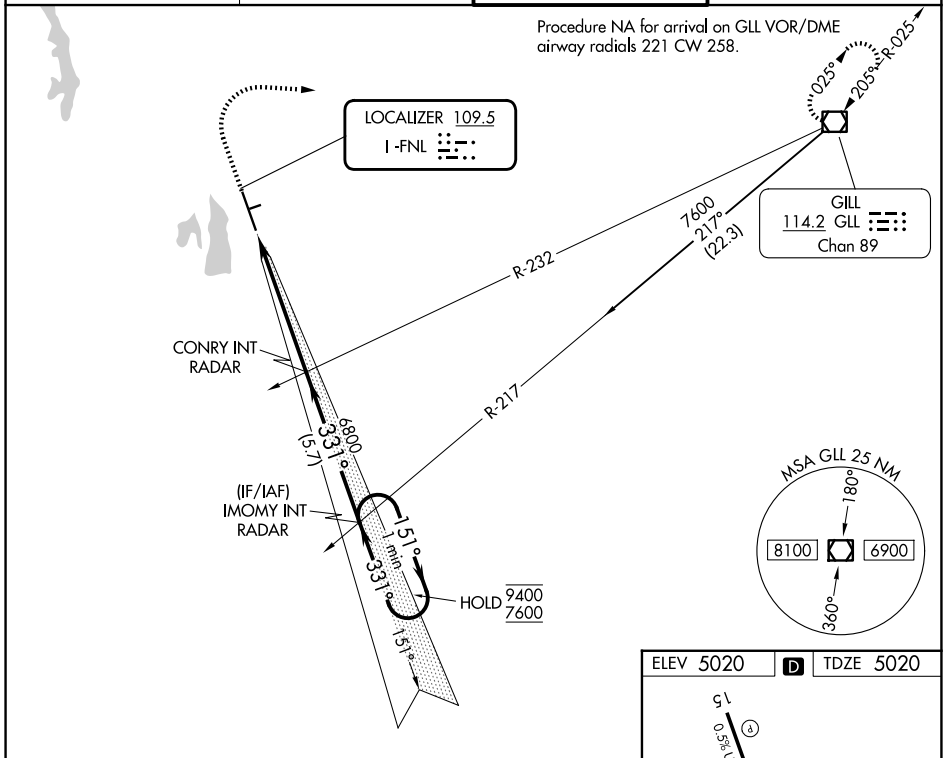
LOC I-FNL <b>109.5</b>	APP CRS <b>331°</b>	Rwy Ldg TDZE <b>8500</b> <b>5020</b>	Apt Elev <b>5020</b>
---------------------------	------------------------	--	-------------------------

# ILS or LOC RWY 33

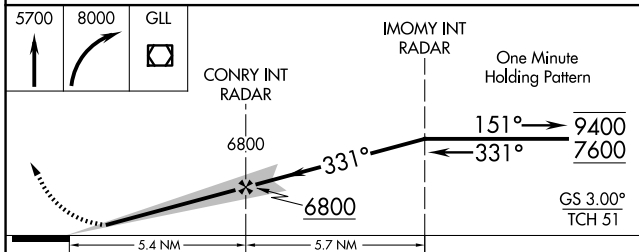
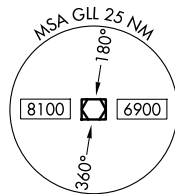
NORTHERN COLORADO RGNL (F'NL)

<p>Girdling Rwy 24 NA at night. For inop ALS, increase S-LOC 33 Cat C/D visibility to 1 3/8 SM.</p>	<p>MALS</p>	<p>MISSED APPROACH: Climb to 5700, then climbing right turn to 8000 direct GLL VOR/DME and hold.</p>

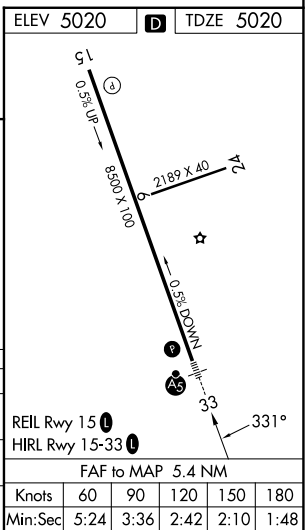
<p>ATIS <b>135.075</b></p>	<p>DENVER APP CON <b>134.85 251.125</b></p>	<p>NOCO TOWER * <b>118.4 (CTAF)</b></p>	<p>GND CON <b>121.65</b></p>
--------------------------------	---	---	----------------------------------



Procedure NA for arrival on GLL VOR/DME airway radials 221 CW 258.



CATEGORY	A	B	C	D
S-ILS 33	5220-1/2		200 (200-1/2)	
S-LOC 33	5500-1/2	480 (500-1/2)	5500-1	480 (500-1)
CIRCLING	5500-1 480 (500-1)	5520-1 500 (500-1)	5520-1 1/2 500 (500-1 1/2)	5700-2 1/4 680 (700-2 1/4)



SW-1, 11 JUN 2026 to 09 JUL 2026

SW-1, 11 JUN 2026 to 09 JUL 2026