


LOC/DME I-BWMM 111.95 Chan 56(Y)	APP CRS 177°	Rwy Ldg 5199 TDZE 1182 Apt Elev 1182
--	------------------------	---

ILS or LOC RWY 18

UNIVERSITY OF OKLAHOMA WESTHEIMER (OUN)

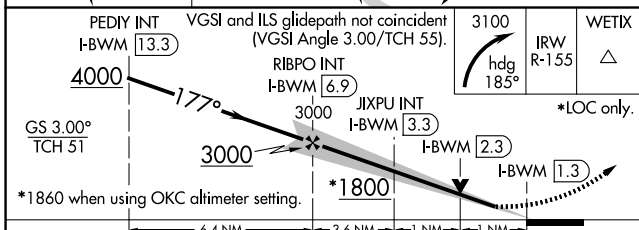
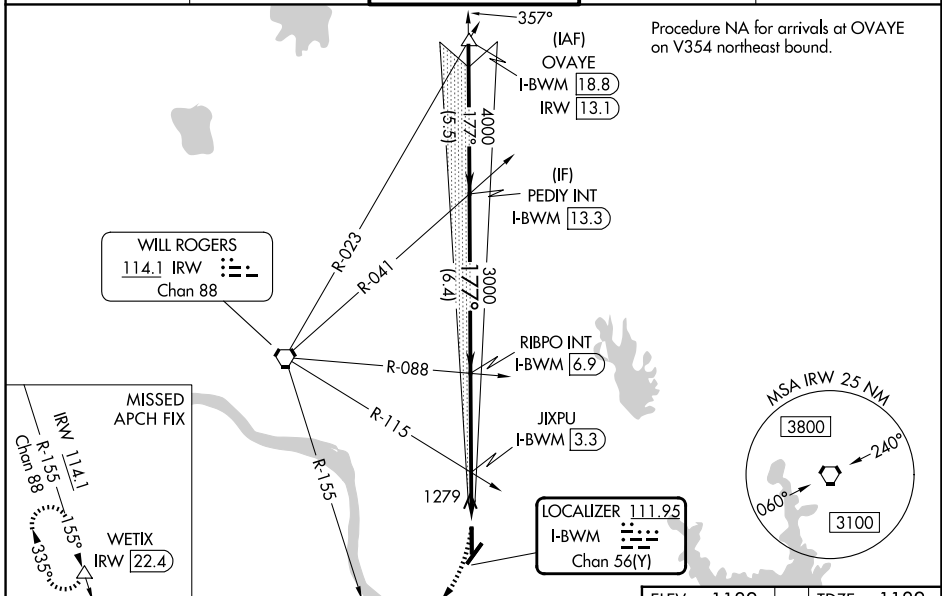
DME required.

▼ Circling NA southeast of Rwy 3-21. VDP NA when using OKC altimeter setting.
 ▲ When local altimeter setting not received, use OKC altimeter setting: increase S-ILS 18 DA to 1423 feet; increase all MDAs 60 feet, S-LOC 18 visibility Cats C and D 1/8 SM, and Circling visibility Cats C and D 1/4 SM; increase JIXPU fix minimums S-LOC 18 visibility Cats C and D 1/8 SM, and Circling visibility Cats C and D 1/4 SM.

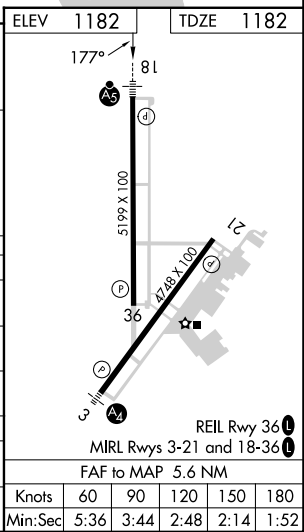
MALSR 

MISSED APPROACH: Climbing right turn to 3100 on heading 185° and IRW VORTAC R-155 to WETIX/IRW VORTAC 22.4 DME and hold.

AWOS-3PT 119.55	OKE CITY APP CON 120.45 288.325	WESTHEIMER TOWER★ 118.0 (CTAF) 0	GND CON 121.6	UNICOM 122.95
---------------------------	---	--	-------------------------	-------------------------



CATEGORY	A	B	C	D
S-ILS 18		1382-1/2	200 (200-1/2)	
S-LOC 18	1800-1/2	618 (700-1/2)	1800-13/8	618 (700-13/8)
CIRCLING	1800-1	618 (700-1)	1940-2 1/4 758 (800-2 1/4)	1940-2 1/2 758 (800-2 1/2)
JIXPU FIX MINIMUMS (DUAL VOR RECEIVERS OR DME REQUIRED)				
S-LOC 18	1540-1/2	358 (400-1/2)	1540-5/8	358 (400-5/8)
CIRCLING	1660-1	478 (500-1)	1940-2 1/4 758 (800-2 1/4)	1940-2 1/2 758 (800-2 1/2)



SC-1, 11 JUN 2026 to 09 JUL 2026

SC-1, 11 JUN 2026 to 09 JUL 2026