

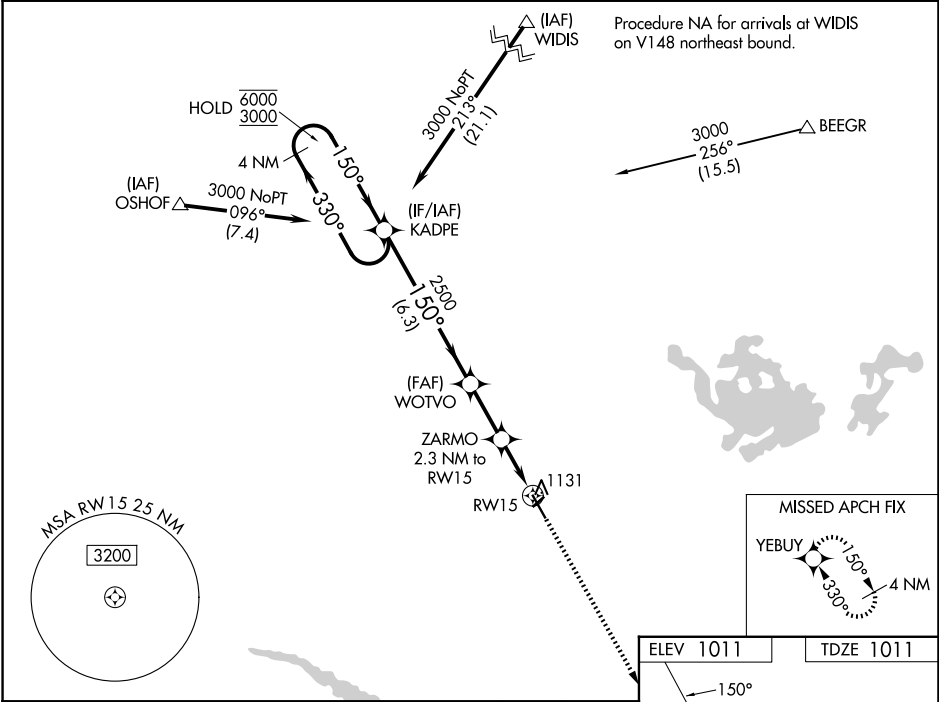
WAAS CH 87131 W15A	APP CRS 150°	Rwy Ldg TDZE Apt Elev 5401 1011 1011
--	------------------------	--

RNAV (GPS) RWY 15

NEW ULM MUNI (ULM)

RNP APCH.	MISSED APPROACH: Climb to 3000 direct YEBUY and hold.
▼ Circling NA to Rwys 4 and 22. For uncompensated Baro-VNAV systems, LNAV/VNAV NA below -17°C or above 54°C.	

AWOS-3 118.325	MINNEAPOLIS CENTER 127.1 290.2	GCO 121.725	UNICOM 123.0 (CTAF) 0
--------------------------	--	-----------------------	---------------------------------



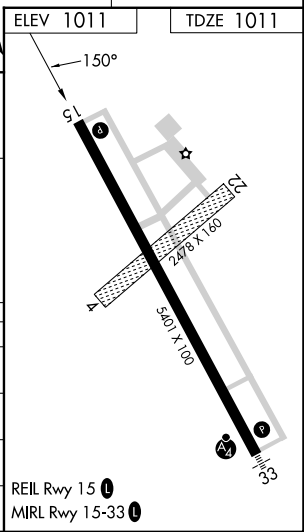
VGSI and RNAV glidepath not coincident (VGSI Angle 3.00/TCH 25).

4 NM Holding Pattern KADPE

GP 3.00° TCH 40

6000	3000	2500	1760	3000
← 330°		→ 150°	→ 150°	→ 150°
4 NM		6.3 NM	2.3 NM	1.1 NM
KADPE		WOTVO	ZARMO	YEBUY
		2.3 NM to RW15	1.2 NM to RW15	

CATEGORY	A	B	C	D
LPV DA		1261-1	250 (300-1)	
LNAV/VNAV DA		1298-1	287 (300-1)	
LNAV MDA	1400-1	389 (400-1)	1400-1½	389 (400-1½)
CIRCLING	1440-1 429 (500-1)	1500-1 489 (500-1)	1620-1¾ 609 (700-1¾)	1620-2 609 (700-2)



NC-1, 11 JUN 2026 to 09 JUL 2026

NC-1, 11 JUN 2026 to 09 JUL 2026