

WAAS CH <b>99345</b> <b>W14A</b>	APP CRS <b>139°</b>	Rwy Ldg TDZE Apt Elev	<b>5500</b> <b>1013</b> <b>1013</b>
--	------------------------	-----------------------------	---

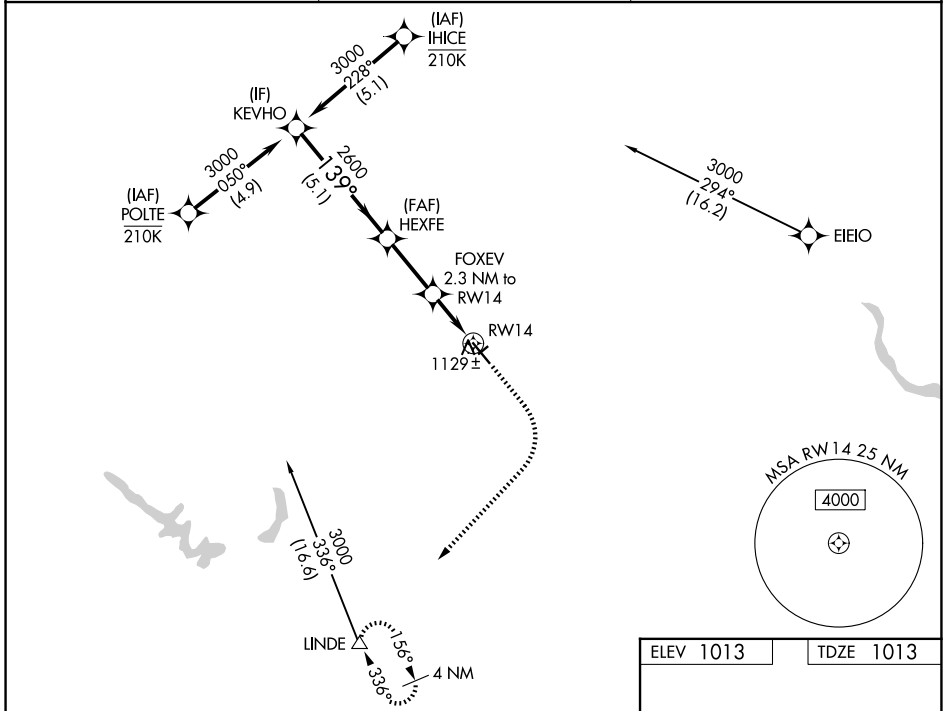
# RNAV (GPS) RWY 14

PERRY MUNI (PRO)

RNP APCH - GPS.  
 ⚠ Circling NA to Rwys 4 and 22. For uncompensated Baro-VNAV systems, LNAV/VNAV NA below -17°C or above 54°C.

MISSED APPROACH: Climb to 1500 then climbing right turn to 3500 direct LINDE and hold.

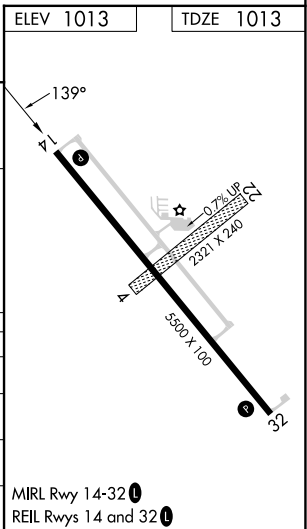
AWOS-3 <b>118.0</b>	DES MOINES APP CON <b>123.9 360.7</b>	UNICOM <b>122.8 (CTAF) 0</b>
------------------------	--	---------------------------------



VGSI and RNAV glidepath not coincident (VGSI Angle 3.00/TCH 34).

KEYHO	HEXFE	FOXEV	LINDE
3000	2600	1780	1500 / 3500
GP 3.00° TCH 40			
5.1 NM	2.6 NM	1.2 NM	1.1 NM
1500	3500	LINDE	

CATEGORY	A	B	C	D
LPV DA		1263-3/4	250 (300-3/4)	
LNAV/VNAV DA		1310-7/8	297 (300-7/8)	
LNAV MDA		1380-1	367 (400-1)	
CIRCLING	1440-1 427 (500-1)	1480-1 467 (500-1)	1600-1 1/2 587 (600-1 1/2)	1840-2 3/4 827 (900-2 3/4)



NC-3, 11 JUN 2026 to 09 JUL 2026

NC-3, 11 JUN 2026 to 09 JUL 2026