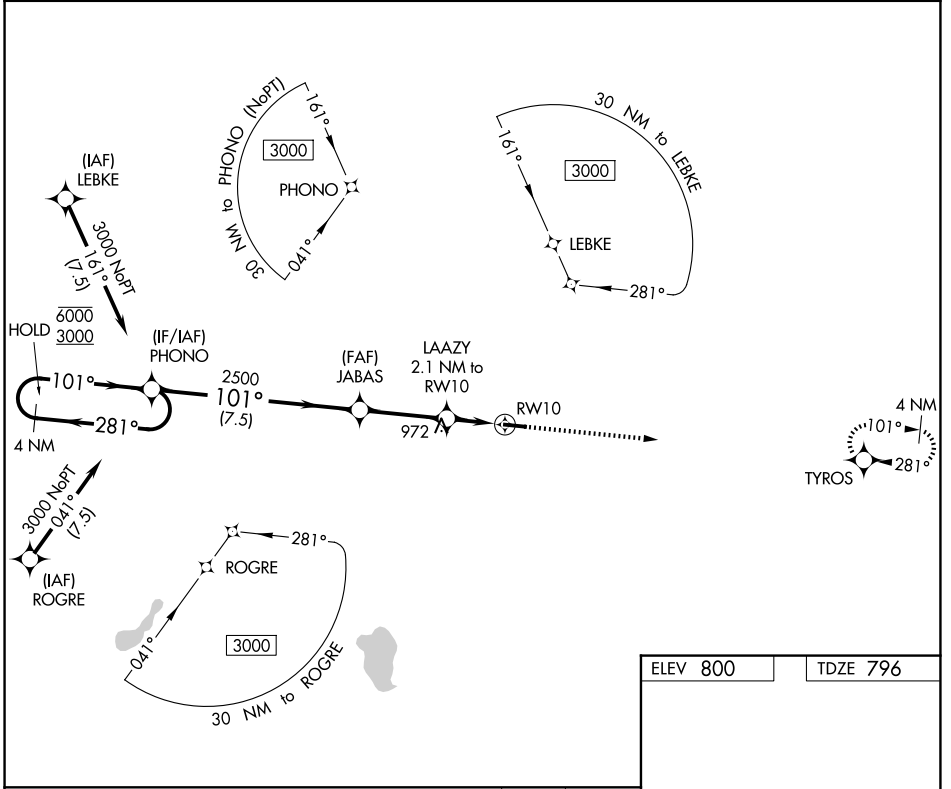


APP CRS <b>101°</b>	Rwy Ldg TDZE Apt Elev	<b>4400</b> <b>796</b> <b>800</b>
------------------------	-----------------------------	---

# RNAV (GPS) RWY 10

PLYMOUTH MUNI (C65)

RNP APCH.		MISSED APPROACH: Climb to 3000 direct TYROS and hold.
Circling to Rwy 28 NA at night. Rwy 10 helicopter visibility reduction below 3/4 SM NA.		
AWOS-3 <b>133.025</b>	SOUTH BEND APP CON * <b>132.05 257.8</b>	UNICOM <b>122.975 (CTAF) 0</b>



EC-2, 11 JUN 2026 to 09 JUL 2026

EC-2, 11 JUN 2026 to 09 JUL 2026

ELEV 800	TDZE 796
----------	----------

**4 NM Holding Pattern**

VGSI and descent angles not coincident (VGSI Angle 3.00/TCH 28).

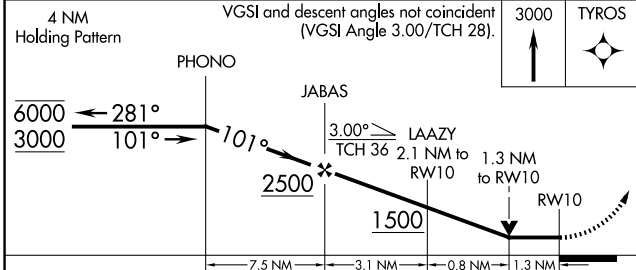
3000 TYROS

822

101°

4000 X 75

101°



CATEGORY	A	B	C	D
LNVA MDA	1240-1	444 (500-1)	1240-1 3/8 444 (500-1 3/8)	NA
CIRCLING	1280-1 480 (500-1)	1360-1 560 (600-1)	1540-2 740 (800-2)	NA

MIRL Rwy 10-28 0  
REIL Rwy 10 and 28 0