

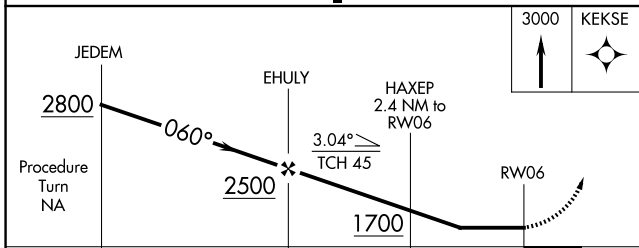
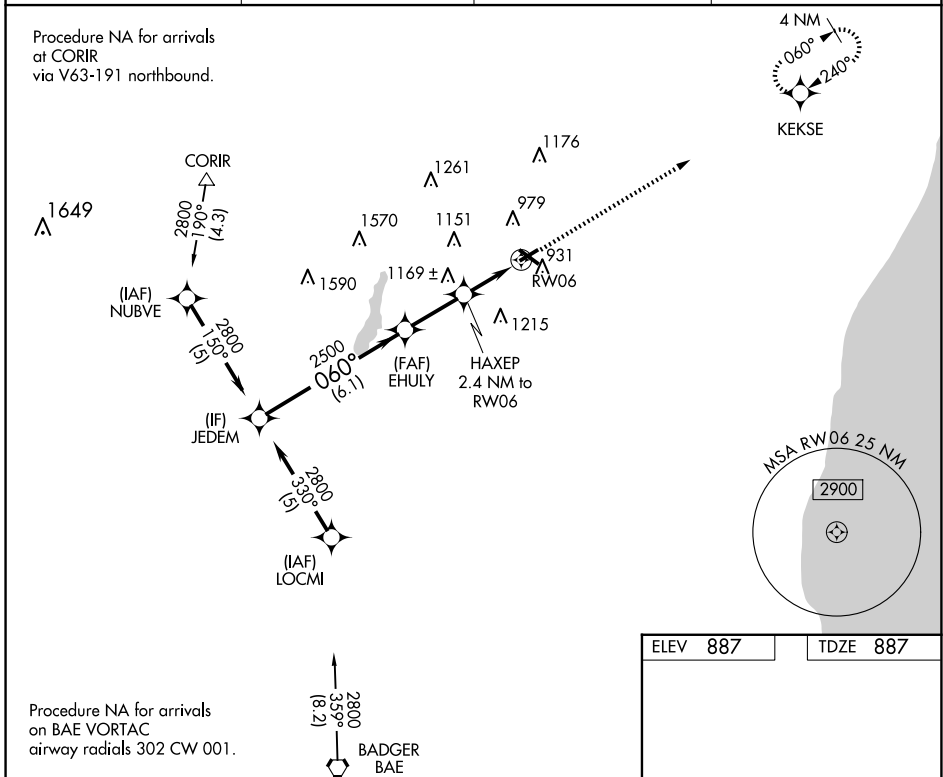
APP CRS	Rwy Idg	<b>3898</b>
<b>060°</b>	TDZE	<b>887</b>
	Apt Elev	<b>887</b>

# RNAV (GPS) RWY 6

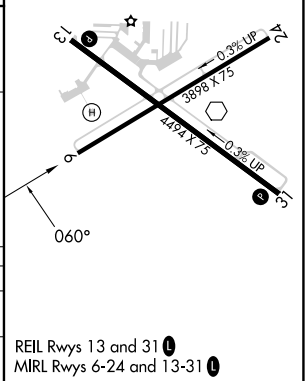
WEST BEND MUNI (ETB)

RNP APCH - GPS.			MISSED APPROACH: Climb to 3000 direct KEKSE and hold.
<p><b>▼</b> When local altimeter setting not received, use Milwaukee/Lawrence J. Timmerman altimeter setting and increase all MDA 80 feet and LNAV and Circling Cat C/D visibility ¼ mile.</p> <p><b>▲</b> Night landing: Rwy 6 NA. Helicopter visibility reduction below 1 SM NA.</p>			

AWOS-3 <b>120.0</b>	MILWAUKEE APP CON <b>125.35 307.0</b>	CLNC DEL <b>124.75</b>	UNICOM <b>123.05 (CTAF) ①</b>
------------------------	--	---------------------------	----------------------------------



CATEGORY	A	B	C	D
LNAV MDA	1460-1	573 (600-1)	1460-1 $\frac{5}{8}$ 573 (600-1 $\frac{5}{8}$ )	1460-1 $\frac{3}{4}$ 573 (600-1 $\frac{3}{4}$ )
CIRCLING	1460-1 573 (600-1)	1520-1 633 (700-1)	1560-2 673 (700-2)	1560-2 $\frac{1}{4}$ 673 (700-2 $\frac{1}{4}$ )



EC-3, 11 JUN 2026 to 09 JUL 2026

EC-3, 11 JUN 2026 to 09 JUL 2026