


LOC/DME I-CH <b>111.5</b> Chan <b>52</b>	APP CRS <b>004°</b>	Rwy Ldg <b>5001</b> TDZE <b>343</b> Apt Elev <b>343</b>
--	------------------------	---

# ILS or LOC RWY 36

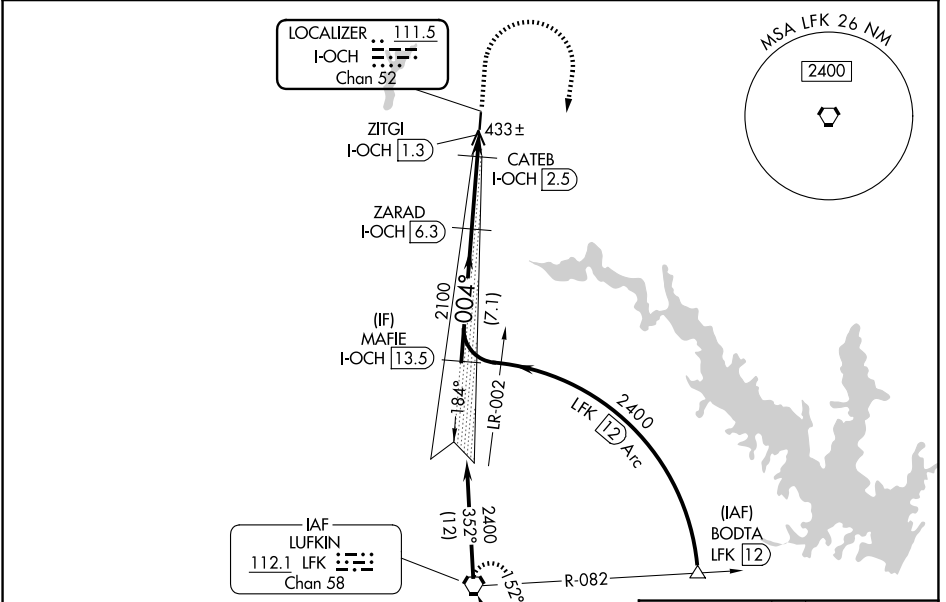
NACOGDOCHES A L MANGHAM JR RGNL (OCH)

DME required.

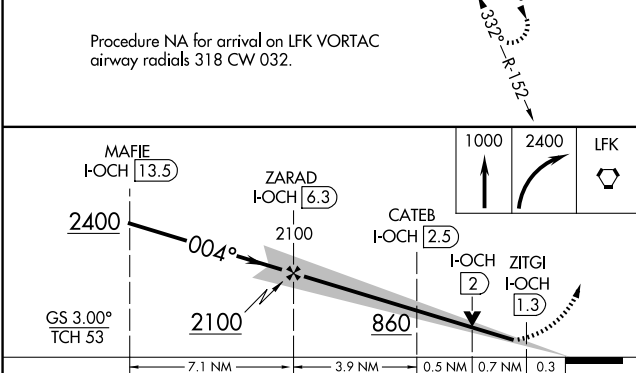
**NA** VDP NA when using LFK altimeter setting. Autopilot coupled approach NA below 740. When local altimeter setting not received, use LFK altimeter setting: Increase S-ILS 36 DA to 598 feet; increase all MDAs 60 feet and S-LOC 36 visibility Cat C 1/2 SM, and Circling visibility Cat C 1/4 SM. Localizer unusable inside 0.3 NM from threshold.

MALSR  MISSED APPROACH: Climb to 1000 then climbing right turn to 2400 direct LFK VORTAC and hold.

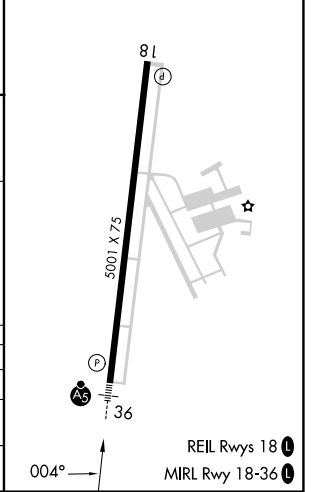
AWOS-3PT <b>135.625</b>	HOUSTON CENTER <b>125.175 285.575</b>	UNICOM <b>123.0 (CTAF)</b>
----------------------------	--	-------------------------------



Procedure NA for arrival on LFK VORTAC  
airway radials 318 CW 032.



ELEV 343	TDZE 343
----------	----------



CATEGORY	A	B	C	D
S-ILS 36	543-1/2	200 (200-1/2)		NA
S-LOC 36	700-1/2	357 (400-1/2)	700-5/8 357 (400-5/8)	NA
CIRCLING	860-1	517 (600-1)	1080-2 737 (800-2)	NA

SC-5, 11 JUN 2026 to 09 JUL 2026

SC-5, 11 JUN 2026 to 09 JUL 2026