

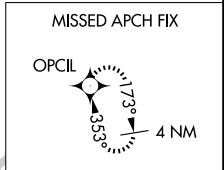
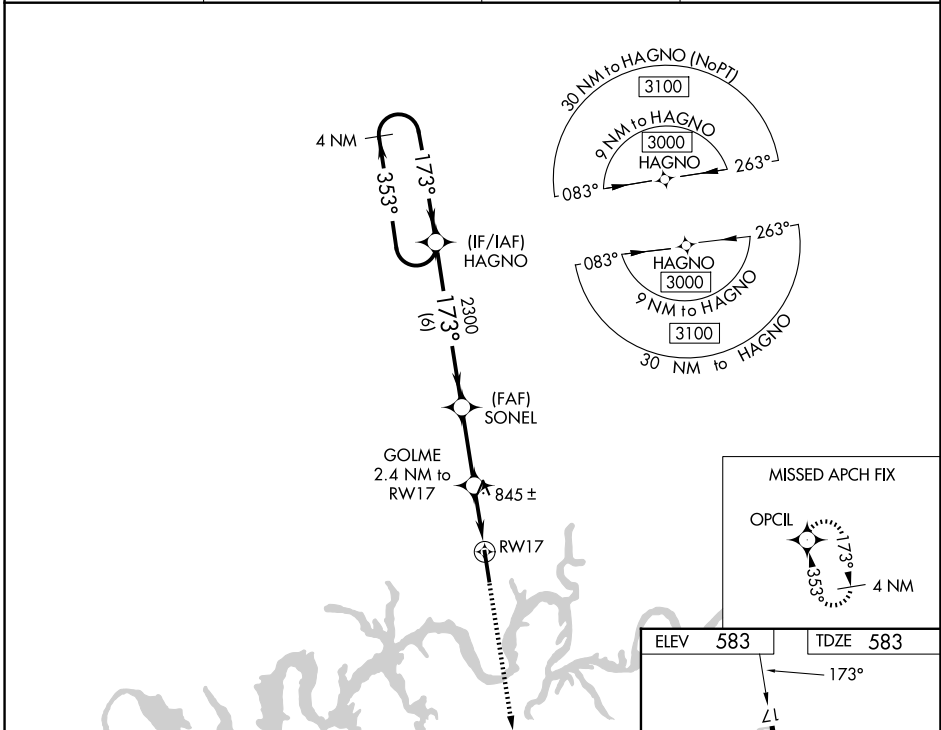
WAAS CH 70725 W17A	APP CRS 173°	Rwy Ldg TDZE Apt Elev	6300 583 583
--	------------------------	-----------------------------	---

RNAV (GPS) RWY 17

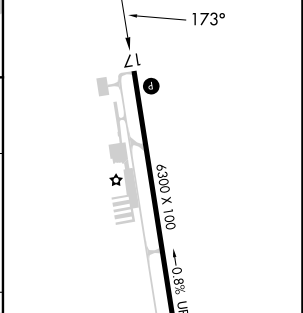
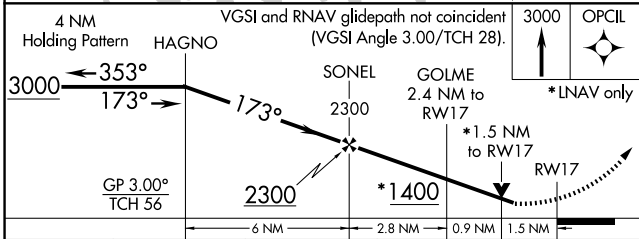
MUSIC CITY EXEC (XNX)

RNP APCH.		MISSED APPROACH: Climb to 3000 direct OPCIL and hold.	
<p>▽ For uncompensated Baro-VNAV systems, LNAV/VNAV NA below -16°C or above 54°C. Rwy 17 helicopter visibility reduction below 3/4 SM NA.</p>			

AWOS-3 132.725	NASHVILLE APP CON 118.4 360.7	GCO 135.075	UNICOM 123.05 (CTAF) 0
--------------------------	---	-----------------------	----------------------------------



ELEV	583	TDZE	583
------	-----	------	-----



CATEGORY	A	B	C	D
LPV DA		1069-13/8	486 (500-13/8)	
LNAV/VNAV DA		1075-13/8	492 (500-13/8)	
LNAV MDA	1100-1	517 (600-1)	1100-13/8	517 (600-13/8)
CIRCLING	1100-1 517 (600-1)	1120-1 537 (600-1)	1240-13/4 657 (700-13/4)	1280-21/4 697 (700-21/4)

MIRL Rwy 17-35 0	REIL Rwy 17 and 35 0
-------------------------	-----------------------------

SE-1, 11 JUN 2026 to 09 JUL 2026

SE-1, 11 JUN 2026 to 09 JUL 2026