

WAAS CH 53742 W17A	APP CRS 177°	Rwy Ldg TDZE Apt Elev	3598 1411 1411
--	------------------------	-----------------------------	---

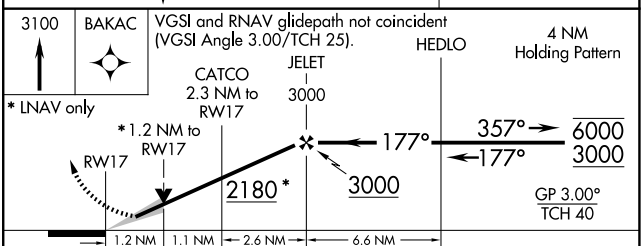
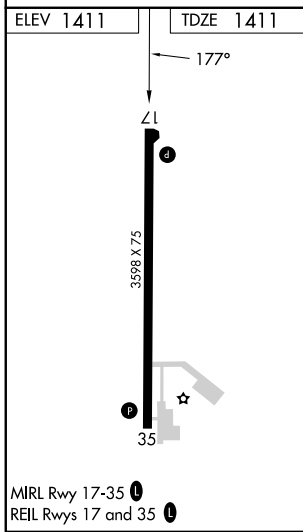
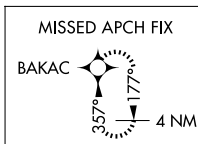
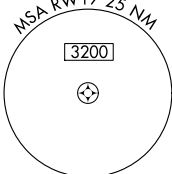
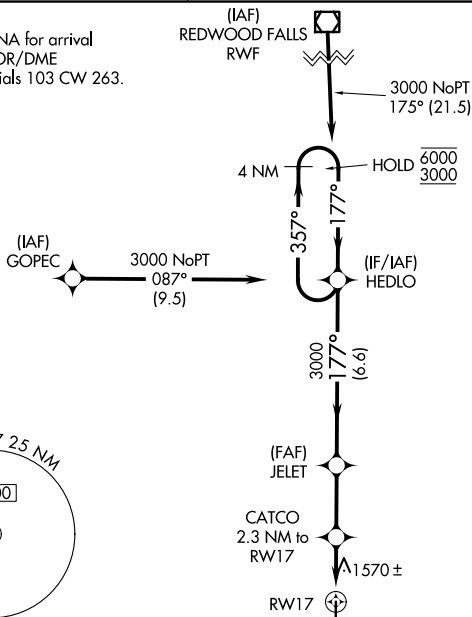
RNAV (GPS) RWY 17

WINDOM MUNI (MWM)

RNP APCH.	MISSED APPROACH: Climb to 3100 direct BAKAC and hold.
▼ For uncompensated Baro-VNAV systems, LNAV/VNAV NA ▲ below -17°C or above 54°C.	

AWOS-3PT 119.325	MINNEAPOLIS CENTER 127.1 290.2	CTAF 122.9
----------------------------	--	----------------------

Procedure NA for arrival on RWF VOR/DME airway radials 103 CW 263.



CATEGORY	A	B	C	D
LPV DA	1661-1	250 (300-1)		NA
LNAV/VNAV DA	1858-1 ³ / ₈	447 (500-1 ³ / ₈)		NA
LNAV MDA	1820-1	409 (500-1)	1820-1 ¹ / ₈ 409 (500-1 ¹ / ₈)	NA
CIRCLING	1880-1 469 (500-1)	1900-1 489 (500-1)	1920-1 ¹ / ₂ 509 (600-1 ¹ / ₂)	NA

NC-1, 11 JUN 2026 to 09 JUL 2026

NC-1, 11 JUN 2026 to 09 JUL 2026