

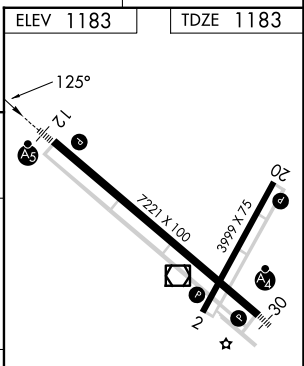
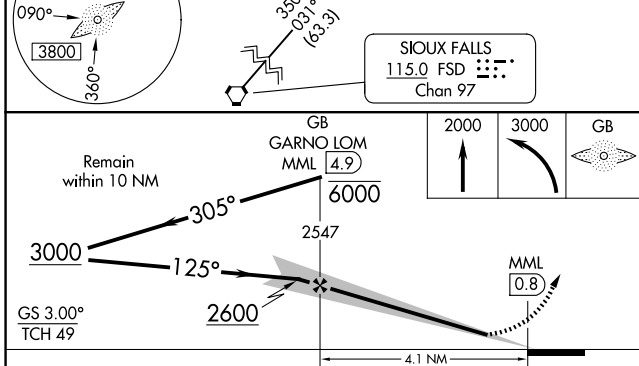
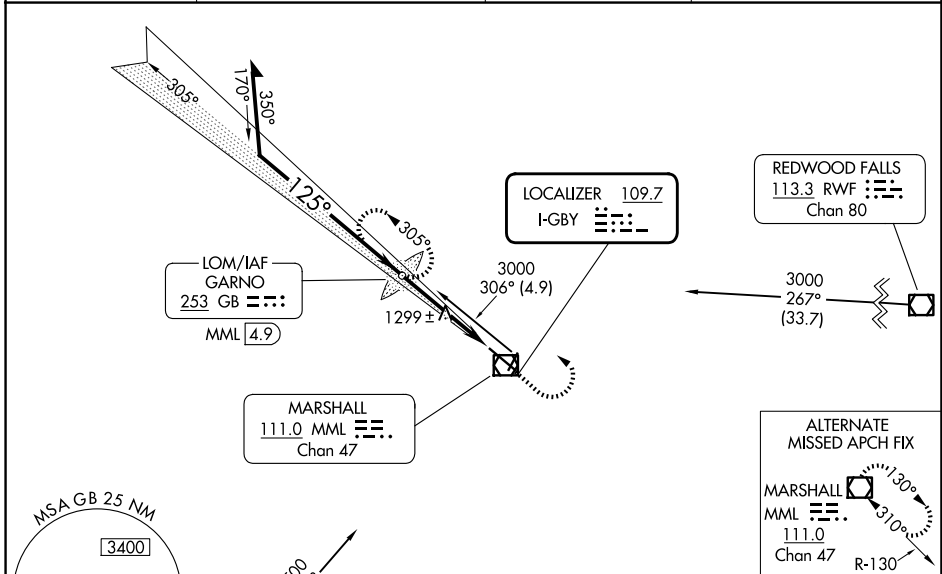
LOC I-GBY 109.7	APP CRS 125°	Rwy Ldg TDZE Apt Elev	7221 1183 1183
---------------------------	------------------------	-----------------------------	---

ILS or LOC RWY 12

SOUTHWEST MINNESOTA RGNL MARSHALL/RYAN FLD (MML)

ADF or DME required.	MALSR 	MISSED APPROACH: Climb to 2000 then climbing left turn to 3000 direct GARNO LOM/ MML 4.9 DME and hold.
<p>NA When local altimeter setting not received, use Tracy Muni altimeter setting and increase ILS DA to 1441 feet and all MDA 60 feet, S-LOC Cat C/D visibility 1/8 SM and Circling visibility Cat C/D 1/4 SM. Inop table does not apply. For inop ALS increase S-LOC 12 all Cats visibility to 1 SM. Inop table does not apply when using Tracy Muni altimeter setting. For inop ALS when using Tracy Muni altimeter setting, increase S-LOC 12 Cat A/B visibility to 1 SM.</p>		

AWOS-3PT 120.150	MINNEAPOLIS CENTER 127.1 290.2	GCO 121.725	UNICOM 122.8 (CTAF) 0
----------------------------	--	-----------------------	---------------------------------



CATEGORY	A	B	C	D
S-ILS 12	1383-1/2 200 (200-1/2)			
S-LOC 12	1560-1/2	377 (400-1/2)	1560-5/8	377 (400-5/8)
CIRCLING	1640-1	457 (500-1)	1820-1 3/4 637 (700-1 3/4)	1840-2 657 (700-2)

HIRL Rwy 12-30					
REIL Rwys 2 and 20					
MRL Rwy 2-20					
FAF to MAP 4.1 NM					
Knots	60	90	120	150	180
Min:Sec	4:06	2:44	2:03	1:38	1:22

ILS or LOC RWY 12

NC-1, 11 JUN 2026 to 09 JUL 2026

NC-1, 11 JUN 2026 to 09 JUL 2026