

WAAS CH 82643 W14A	APP CRS 138°	Rwy Ldg TDZE Apt Elev	5201 1393 1396
--	------------------------	-----------------------------	---

RNAV (GPS) RWY 14

DETROIT LAKES/WETHING FLD (DTL)

RNP APCH.

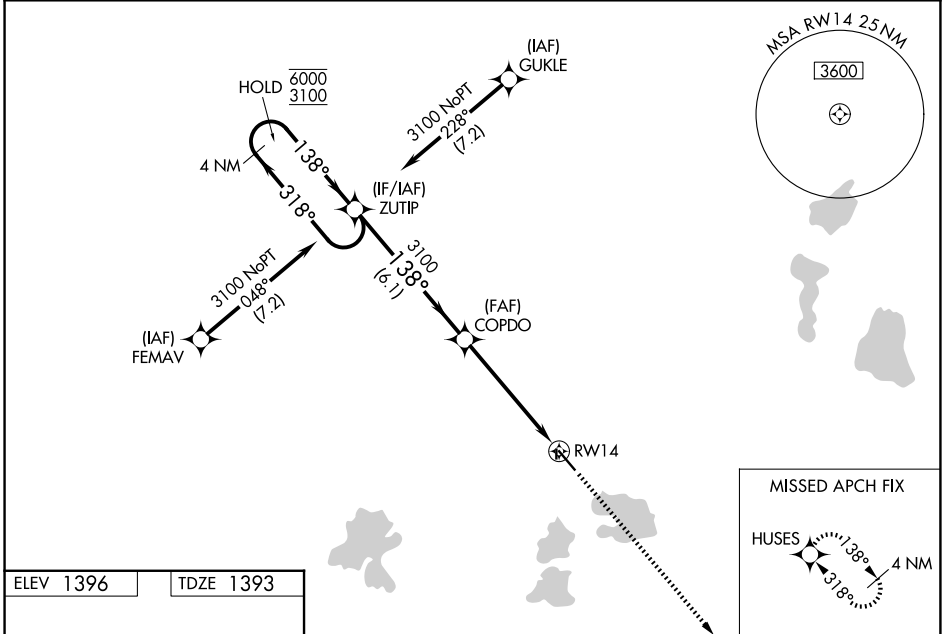
⚠ Circling NA to Rwy 18 and 36. Baro-VNAV and VDP NA when using Park Rapids altimeter setting. For uncompensated Baro-VNAV systems, LNAV/VNAV NA below -17°C or above 54°C. When local altimeter setting not received, use Park Rapids altimeter setting: increase DA to 1728 feet and all visibilities ¼ SM, increase all MDA 100 feet and visibility Cats C and D ¼ SM.

MISSED APPROACH: Climb to 3100 direct HUSES and hold.

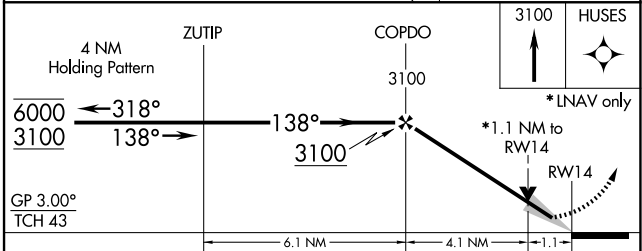
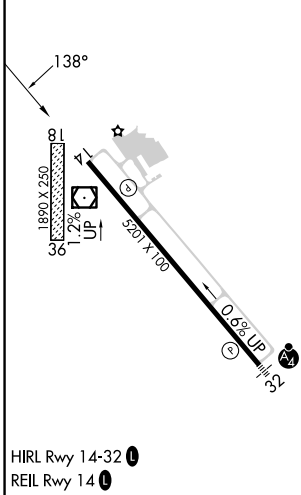
AWOS-3PT
119.075

MINNEAPOLIS CENTER
126.1 269.2

UNICOM
122.8 (CTAF) 0



ELEV 1396 TDZE 1393



CATEGORY	A	B	C	D
LPV DA		1643-1	250 (300-1)	
LNAV/VNAV DA		1643-1	250 (300-1)	
LNAV MDA	1780-1	387 (400-1)	1780-1½	387 (400-1½)
CIRCLING	1820-1 424 (500-1)	1860-1 464 (500-1)	2080-2 684 (700-2)	2140-2½ 744 (800-2½)

NC-1, 11 JUN 2026 to 09 JUL 2026

NC-1, 11 JUN 2026 to 09 JUL 2026