

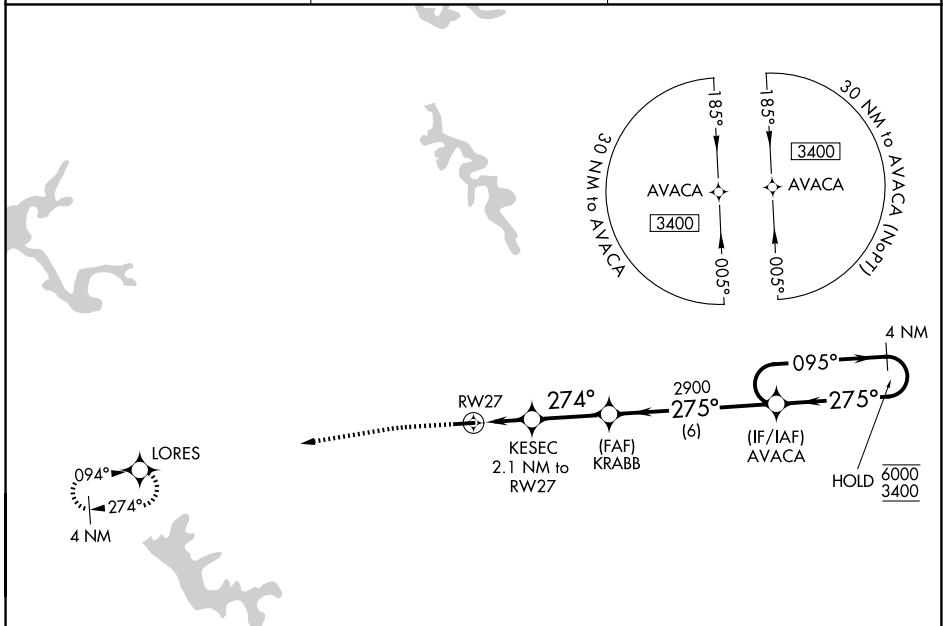
WAAS CH <b>70427</b> <b>W27A</b>	APP CRS <b>274°</b>	Rwy Ldg TDZE Apt Elev	<b>4003</b> <b>1312</b> <b>1312</b>
--	------------------------	-----------------------------	---

# RNAV (GPS) RWY 27

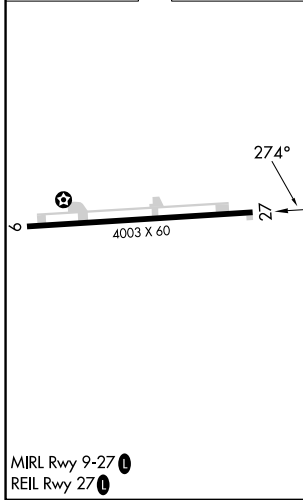
BARNESVILLE/BRADFIELD (6G5)

RNP APCH - GPS.	<p>Visibility reduction by helicopters NA. Procedure NA at night. Use HLG altimeter setting; when not received use AFJ altimeter setting and increase all MDA 40 feet.</p>	<p>MISSED APPROACH: Climbing left turn to 3000 direct LORES and hold.</p>
-----------------	--	---

HLG ASOS <b>127.375</b>	CLEVELAND CENTER <b>126.95 239.3</b>	UNICOM <b>123.0 (CTAF)</b>
----------------------------	---	-------------------------------



ELEV <b>1312</b>	TDZE <b>1312</b>
------------------	------------------



	3000	LORES	AVACA	4 NM Holding Pattern
		KESEC 2.1 NM to RWY 27	KRABB	
		2020	2900	6000 3400
		274°	275°	095°
		2.1 NM	2.8 NM	6 NM
CATEGORY	A	B	C	D
LP MDA	1780-1	468 (500-1)		NA
LNAV MDA	1800-1	488 (500-1)		NA
CIRCLING	1880-1 568 (600-1)	1940-1 628 (700-1)		NA

MIRL Rwy 9-27  
REIL Rwy 27

EC-2, 11 JUN 2026 to 09 JUL 2026

EC-2, 11 JUN 2026 to 09 JUL 2026