

LOC I-MMV <b>110.9</b>	APP CRS <b>218°</b>	Rwy Idg TDZE Apt Elev	<b>5420</b> <b>161</b> <b>163</b>
---------------------------	------------------------	-----------------------------	---

# ILS or LOC RWY 22

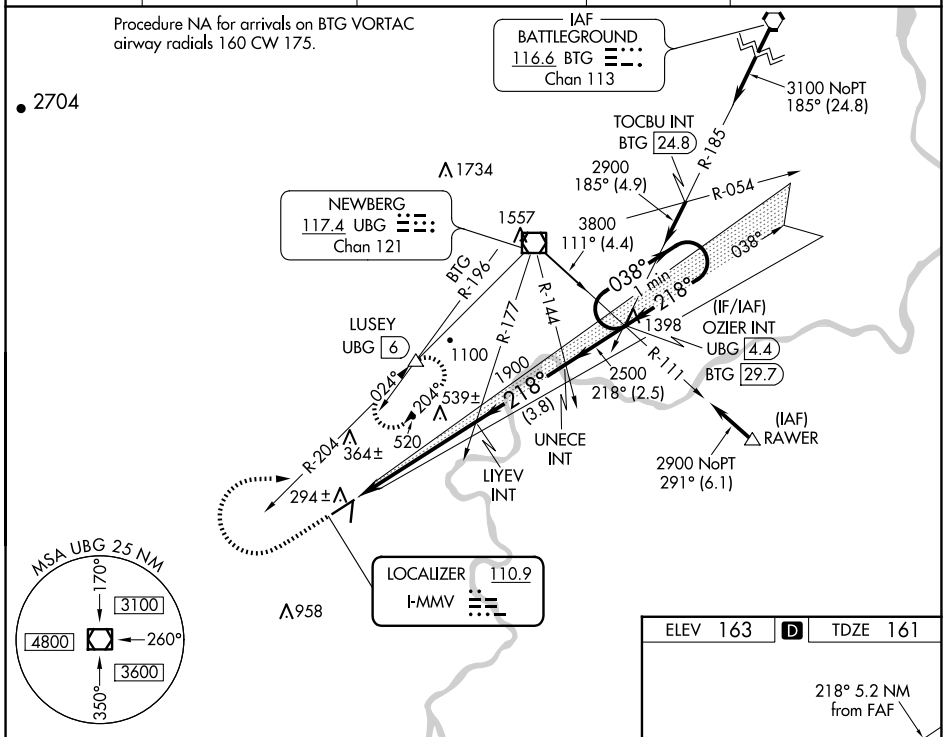
MC MINNVILLE MUNI (MMV)

**⚠** DME required. When local altimeter setting not received, use Aurora State altimeter setting: increase all DA to 403 feet; increase all MDA 60 feet and S-LOC 22 all Cats and Circling Cat C visibility 1/4 SM.

**MALS**  
AS

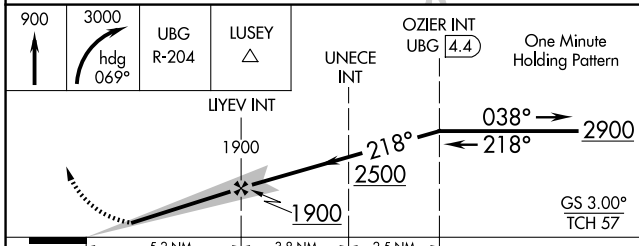
**MISSED APPROACH:** Climb to 900 then climbing right turn to 3000 via heading 069° and UBG VOR/DME R-204 to LUSEY/UBG VOR/DME 6 DME and hold, continue climb-in-hold to 3000.

ASOS <b>135.675</b>	PORTLAND APP CON <b>126.0 284.6</b> (NORTH)	SEATTLE CENTER <b>125.8 291.7</b> (SOUTH)	CLNC DEL <b>118.35</b>	UNICOM <b>123.0</b> (CTAF) <b>⓪</b>
------------------------	--	--	---------------------------	--

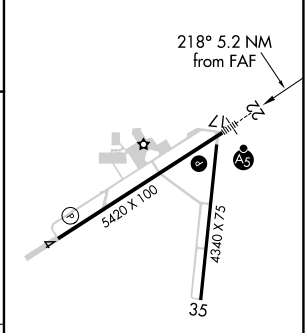


NW-1, 11 JUN 2026 to 09 JUL 2026

NW-1, 11 JUN 2026 to 09 JUL 2026



ELEV 163	<b>D</b>	TDZE 161
----------	----------	----------



CATEGORY	A	B	C	D
S-ILS 22		361-1/2	200 (200-1/2)	
S-LOC 22	600-1/2	439 (500-1/2)	600-3/4 439 (500-3/4)	600-1 439 (500-1)
CIRCLING	660-1 497 (500-1)	840-1 677 (700-1)	920-2 1/4 757 (800-2 1/4)	1320-3 1157 (1200-3)

REIL Rwy 4 <b>⓪</b>	
HIRL Rwy 4-22 <b>⓪</b>	
FAF to MAP 5.2 NM	
Knots	60 90 120 150 180
Min:Sec	5:12 3:28 2:36 2:05 1:44