

WAAS CH <b>82641</b> <b>W17A</b>	APP CRS <b>167°</b>	Rwy Ldg TDZE Apt Elev	<b>4000</b> <b>722</b> <b>722</b>
--	------------------------	-----------------------------	---

# RNAV (GPS) RWY 17

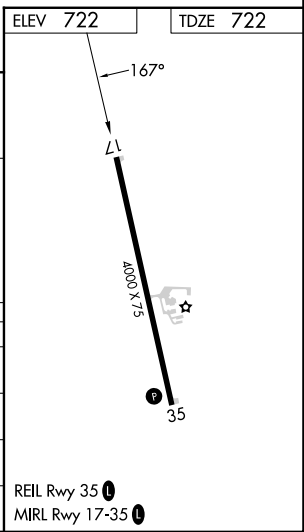
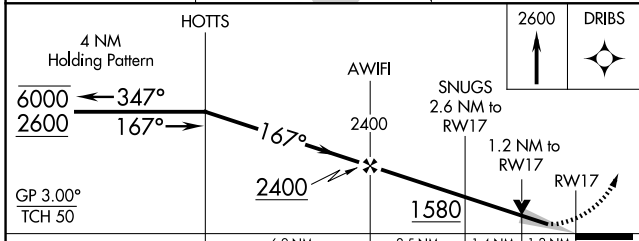
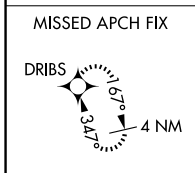
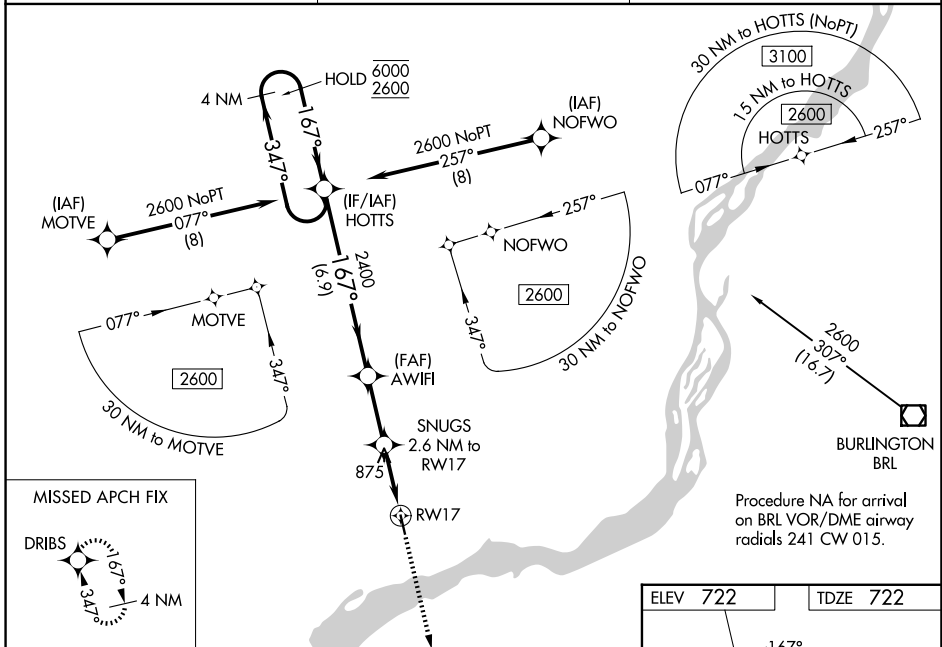
FORT MADISON MUNI (F'SW)

RNP APCH - GPS.

**⚠** For uncompensated Baro-VNAV systems, LNAV/VNAV NA below -16°C or above 54°C. Baro-VNAV and VDP NA when using BRL altimeter setting. When local altimeter setting not received, use BRL altimeter setting; increase LPV DA to 1004 feet; increase LNAV/VNAV DA to 1004 feet; increase all MDAs 40 feet and LNAV visibility Cats C and D ¼ SM, and Circling visibility Cat D ¼ SM.

MISSED APPROACH: Climb to 2600 direct DRIBS and hold.

AWOS-3 <b>120.925</b>	CHICAGO CENTER <b>135.6 316.1</b>	UNICOM <b>122.8</b> (CTAF) <b>📻</b>
--------------------------	--------------------------------------	--



CATEGORY	A	B	C	D
LPV DA	972-1		250 (300-1)	
LNAV/VNAV DA	972-1		250 (300-1)	
LNAV MDA	1140-1	418 (500-1)	1140-1½	418 (500-1½)
CIRCLING	1200-1		1260-1½	1500-2½
			538 (600-1½)	778 (800-2½)

NC-3, 11 JUN 2026 to 09 JUL 2026

NC-3, 11 JUN 2026 to 09 JUL 2026