

| | |
|------------------------|---|
| APP CRS 076° | Rwy Ldg 4002 TDZE 1228 Apt Elev 1228 |
|------------------------|---|

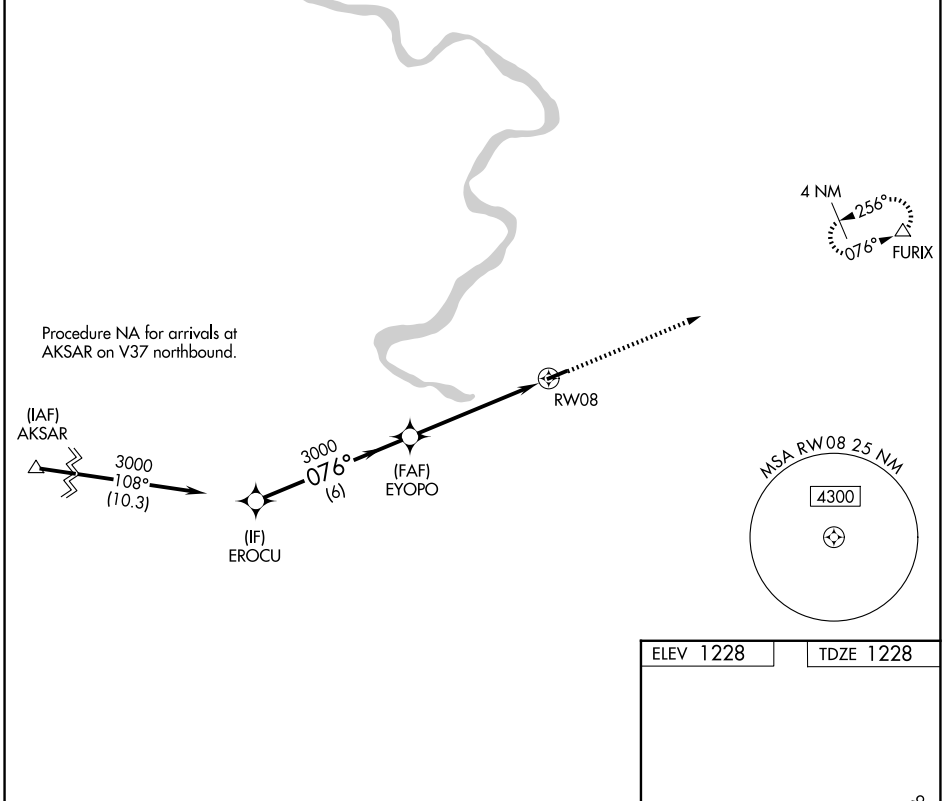
RNAV (GPS) RWY 8

ROSTRAVER (FWQ)

▼ When VGSi inop, Straight-in/Circling Rwy 8 procedure NA at night. DME/DME RNP-0.3 NA. When local altimeter setting not received, use Allegheny County altimeter setting and increase all MDA 40 feet; increase LNAV Cats C/D visibility 1/8 mile. Rwy 8 helicopter visibility reduction below 1 SM NA. Rwy 26 helicopter visibility reduction below 3/4 SM NA.

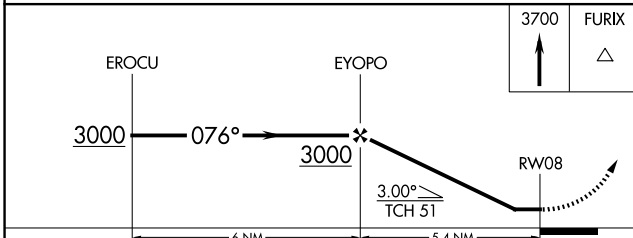
MISSED APPROACH:
Climb to 3700 direct FURIX and hold.

| | | |
|----------------------------|---|---------------------------------|
| AWOS-3PT 118.475 | PITTSBURGH APP CON 119.35 337.4 | UNICOM 122.8 (CTAF) 0 |
|----------------------------|---|---------------------------------|



NE-4, 11 JUN 2026 to 09 JUL 2026

NE-4, 11 JUN 2026 to 09 JUL 2026



| | |
|-----------|-----------|
| ELEV 1228 | TDZE 1228 |
|-----------|-----------|

4002.X75

1228

MIRA Rwy 8-26 0

REIL Rws 8 and 26 0

| CATEGORY | A | B | C | D |
|----------|-----------------------|-----------------------|-------------------------------|-------------------------------|
| LNAV MDA | 1720-1 | 492 (500-1) | 1720-1 3/8 | 492 (500-1 3/8) |
| CIRCLING | 1720-1 492 (500-1) | 1760-1 532 (600-1) | 1760-1 1/2 532 (600-1 1/2) | 1920-2 1/4 692 (700-2 1/4) |