

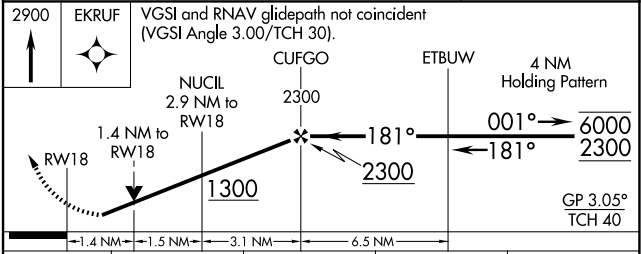
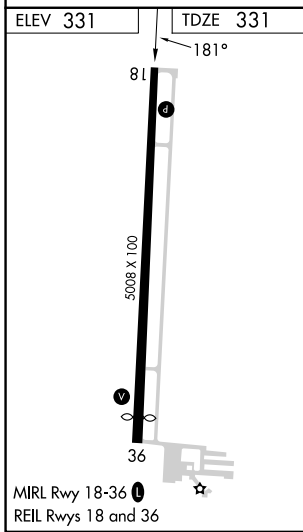
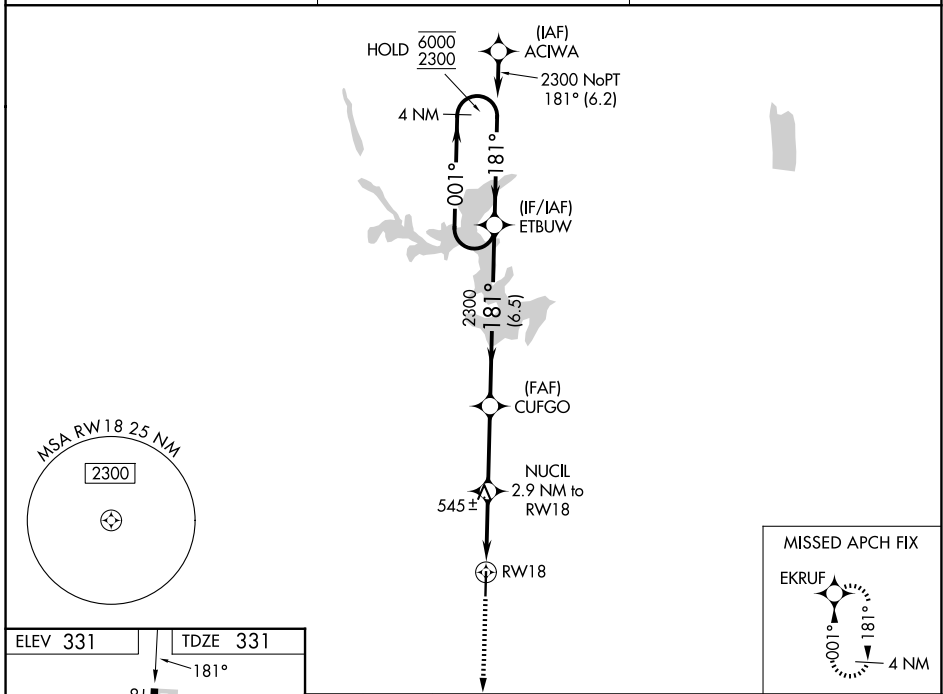
WAAS CH <b>97499</b> <b>W18A</b>	APP CRS <b>181°</b>	Rwy Ldg <b>5008</b> TDZE <b>331</b> Apt Elev <b>331</b>
--	------------------------	---

# RNAV (GPS) RWY 18

POPLAR BLUFF RGNL BUSINESS (POI<sup>F</sup>)

RNP APCH - GPS.	MISSED APPROACH: Climb to 2900 direct EKRU <sup>F</sup> and hold.
Rwy 18 helicopter visibility reduction below 3/4 SM NA. For uncompensated Baro-VNAV systems, LNAV/VNAV NA below -1.5°C or above 54°C.	

ASOS <b>124.225</b>	MEMPHIS CENTER <b>120.075 289.4</b>	UNICOM <b>123.0 (CTAF) 0</b>
------------------------	--	---------------------------------



CATEGORY	A	B	C	D
LPV DA	634-7/8		303 (400-7/8)	
LNAV/VNAV DA	768-1 1/4		437 (500-1 1/4)	
LNAV MDA	800-1 469 (500-1)		800-1 3/8 469 (500-1 3/8)	
CIRCLING	840-1 509 (600-1)	920-1 589 (600-1)	920-1 1/2 589 (600-1 1/2)	980-2 649 (700-2)

NC-3, 11 JUN 2026 to 09 JUL 2026

NC-3, 11 JUN 2026 to 09 JUL 2026