

WAAS CH 49032 W14A	APP CRS 142°	Rwy Ldg 4899
		TDZE 1132
		Apt Elev 1136

RNAV (GPS) RWY 14

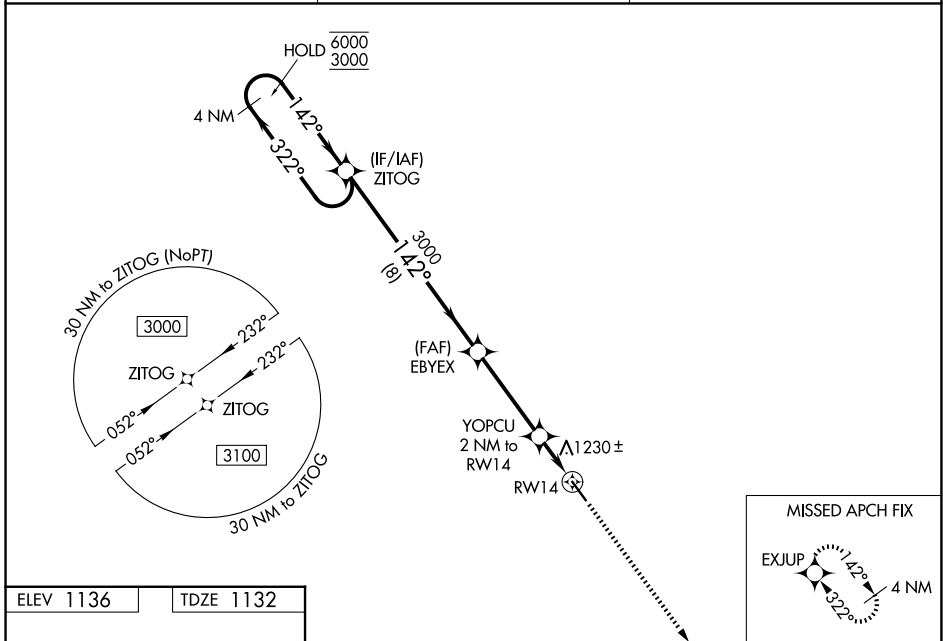
MORRIS MUNI/CHARLIE SCHMIDT FLD (MOX)

RNP APCH-GPS.

⚠ Baro-VNAV and VDP NA when using BBB altimeter setting. For uncompensated Baro-VNAV systems, LNAV/VNAV NA below -17°C or above 54°C. When local altimeter setting not received, use BBB altimeter setting and increase LPV and LNAV/VNAV DA to 1440 feet. Increase all MDAs 60 feet and visibility LNAV Cat C ½ SM and visibility Circling Cat C ¼ SM.

MISSED APPROACH: Climb to 3500 direct EXJUP and hold.

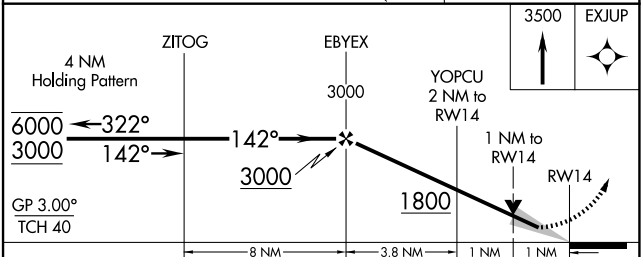
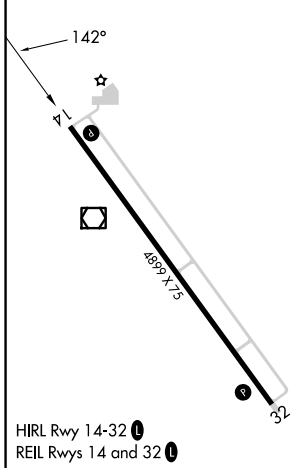
AWOS-3PT 118.6	MINNEAPOLIS CENTER 126.1 269.2	UNICOM 122.8 (CTAF) ①
--------------------------	--	---------------------------------



NC-1, 11 JUN 2026 to 09 JUL 2026

NC-1, 11 JUN 2026 to 09 JUL 2026

ELEV 1136	TDZE 1132
-----------	-----------



CATEGORY	A	B	C	D
LPV DA		1382-1 250 (300-1)		NA
LNAV/VNAV DA		1382-1 250 (300-1)		NA
LNAV MDA		1480-1 348 (400-1)		NA
CIRCLING	1560-1 424 (500-1)	1600-1 464 (500-1)	1860-2 724 (800-2)	NA