

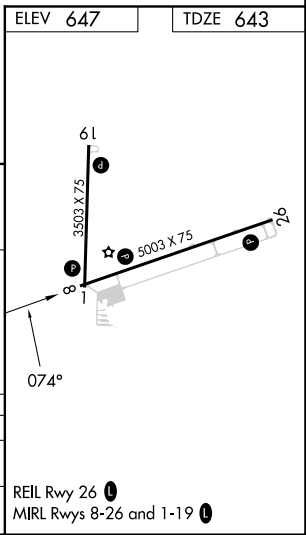
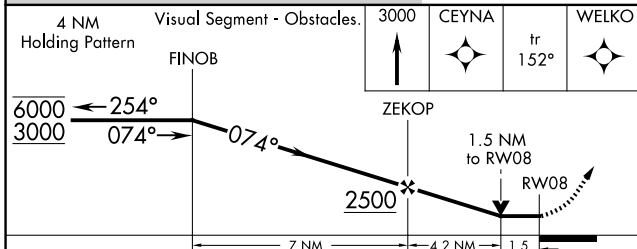
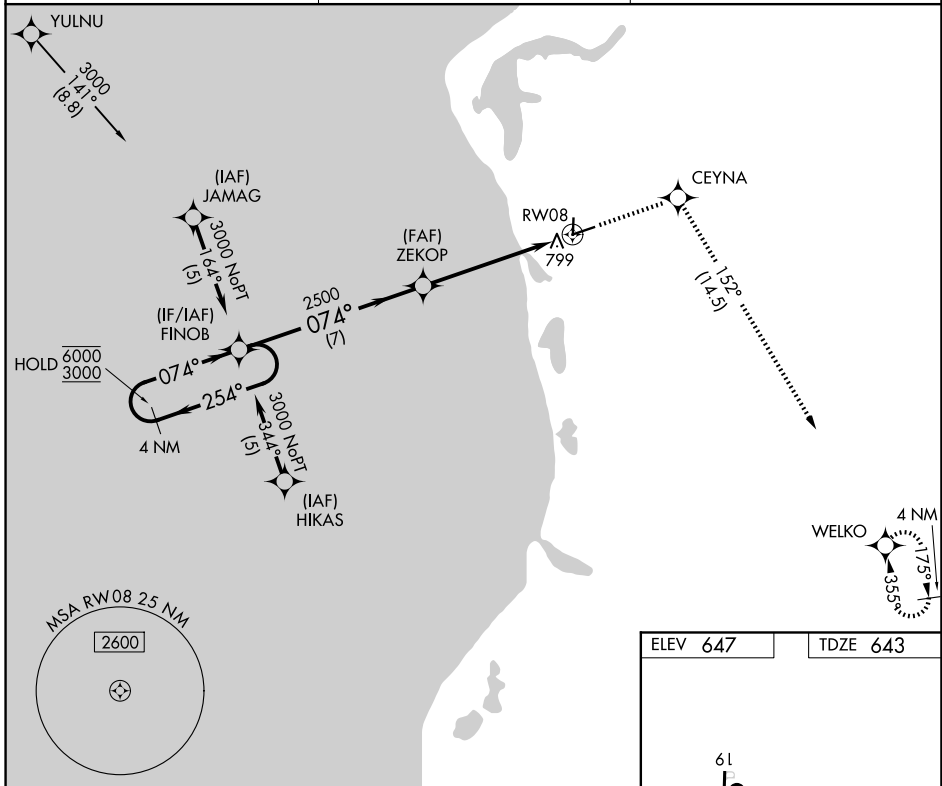
APP CRS	Rwy Ldg	5003
074°	TDZE	643
	Apt Elev	647

RNAV (GPS) RWY 8

MASON COUNTY (LDM)

RNP APCH-GPS.	MISSED APPROACH: Climb to 3000 direct CEYNA and on track 152° to WELKO and hold.
<p>▼ Circling Rwy 1, 19 NA at night.</p> <p>▲ Rwy 8 helicopter visibility reduction below ¾ SM NA.</p>	

AWOS-3P 119.925	MINNEAPOLIS CENTER 120.85 322.35	UNICOM 123.0 (CTAF) 0
---------------------------	--	---------------------------------



CATEGORY	A	B	C	D
LNVA MDA	1140-1	497 (500-1)	1140-1 3/8	497 (500-1 3/8)
CIRCLING	1160-1 513 (600-1)	1200-1 553 (600-1)	1260-1 3/4 613 (700-1 3/4)	1460-2 3/4 813 (900-2 3/4)

EC-1, 11 JUN 2026 to 09 JUL 2026

EC-1, 11 JUN 2026 to 09 JUL 2026