

APP CRS	Rwy Ldg	<b>5001</b>
<b>108°</b>	TDZE	<b>790</b>
	Apt Elev	<b>790</b>

# RNAV (GPS) RWY 11

FULTON COUNTY (R/C/R)

RNP APCH - GPS.

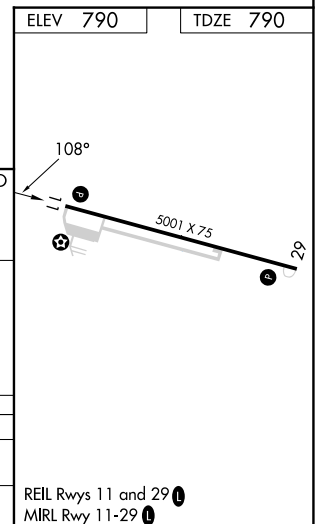
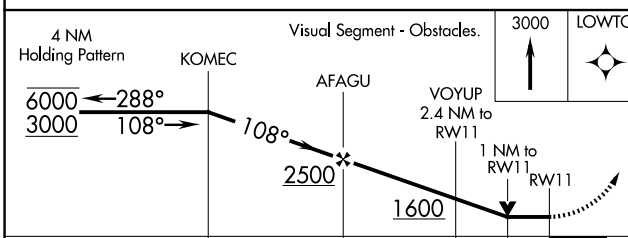
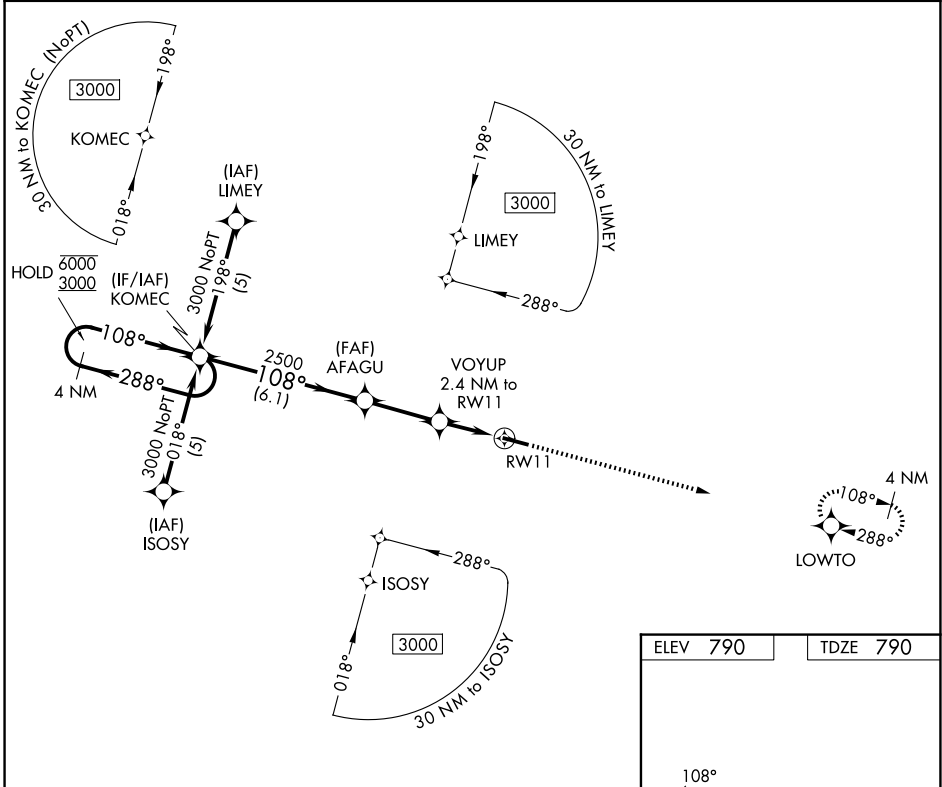
- ▼ Helicopter visibility reduction below 3/4 SM NA. VDP NA when using GSH altimeter setting.
- ▲ When local altimeter setting not received, use GSH altimeter setting: increase all MDA 100 feet and LNAV visibility Cats C/D and Circling Cats C/D 1/4 SM.

MISSED APPROACH: Climb to 3000 direct LOWTO and hold.

AWOS-3  
**118.775**

SOUTH BEND APP CON ★  
**132.05 257.8**

UNICOM  
**122.7 (CTAF) 0**



CATEGORY	A	B	C	D
LNAV MDA	1220-1	430 (500-1)	1220-1 1/4 430 (500-1 1/4)	1220-1 1/2 430 (500-1 1/2)
CIRCLING	1300-1 510 (600-1)	1380-1 590 (600-1)	1480-2 690 (700-2)	1620-2 3/4 830 (900-2 3/4)

REIL Rwy 11 and 29 0  
MIRL Rwy 11-29 0

EC-2, 11 JUN 2026 to 09 JUL 2026

EC-2, 11 JUN 2026 to 09 JUL 2026