

WAAS CH <b>58013</b> <b>W09A</b>	APP CRS <b>088°</b>	Rwy Ldg TDZE Apt Elev	<b>5100</b> <b>916</b> <b>926</b>
--	------------------------	-----------------------------	---

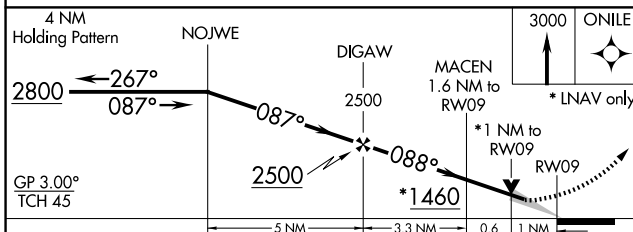
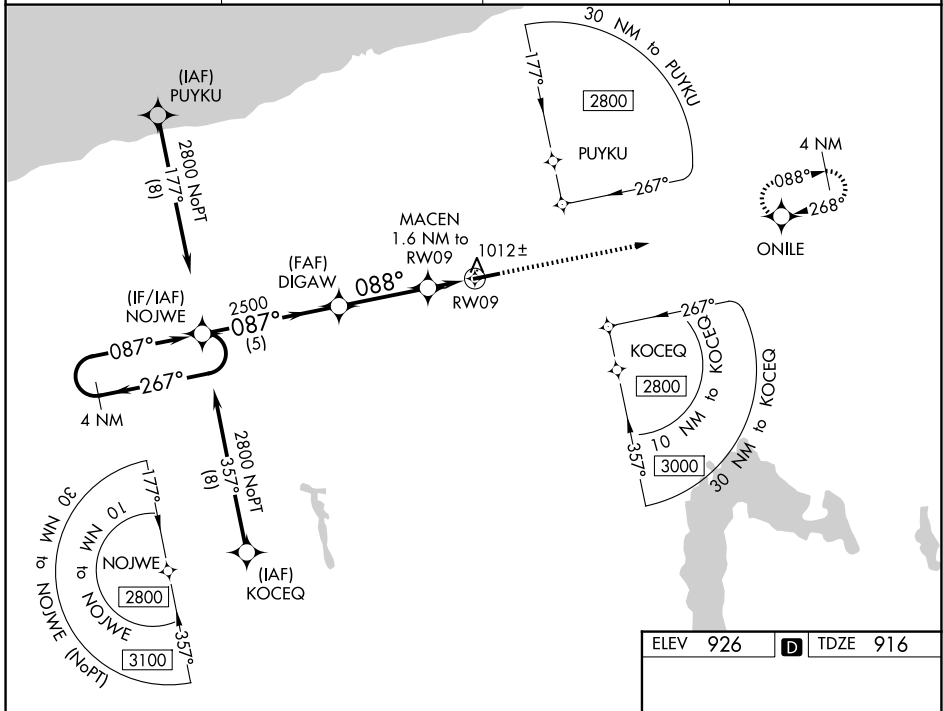
# RNAV (GPS) RWY 9

NORTHEAST OHIO RGNL (HZY)

For uncompensated Baro-VNAV systems, LNAV/VNAV NA below -21°C (-5°F) or above 54°C (130°F). DME/DME RNP-0.3 NA.

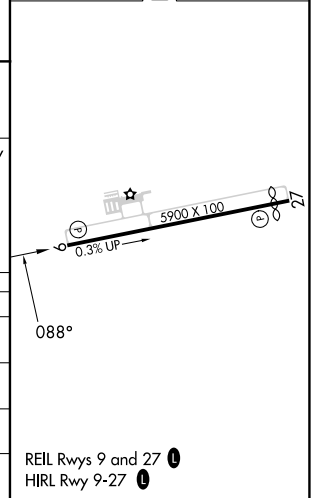
MISSED APPROACH: Climb to 3000 direct ONILE and hold.

ASOS <b>127.025</b>	BUFFALO APP CON * <b>121.0</b>	UNICOM <b>122.8</b> (CTAF)	<b>123.3</b>
------------------------	-----------------------------------	-------------------------------	--------------



ELEV 926		TDZE 916
----------	--	----------

CATEGORY	A	B	C	D
LPV DA		1166-7/8	250 (300-7/8)	
LNAV/VNAV DA		1182-7/8	266 (300-7/8)	
LNAV MDA		1280-1	364 (400-1)	
CIRCLING	1340-1 414 (500-1)	1380-1 454 (500-1)	1500-1½ 574 (600-1½)	1580-2 654 (700-2)



EC-2, 11 JUN 2026 to 09 JUL 2026

EC-2, 11 JUN 2026 to 09 JUL 2026