

LOC I-BJC <b>111.7</b>	APP CRS <b>295°</b>	Rwy Ldg 30R <b>9000</b> 30L <b>7002</b> TDZE <b>5599 5628</b> Apt Elev <b>5673 5673</b>
---------------------------	------------------------	---

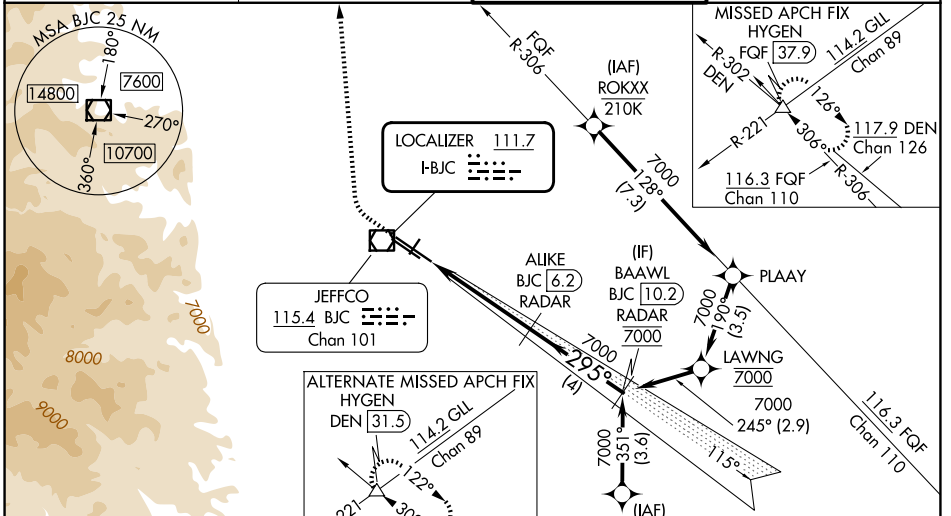
# ILS or LOC RWY 30R

## ROCKY MOUNTAIN METRO (BJC)

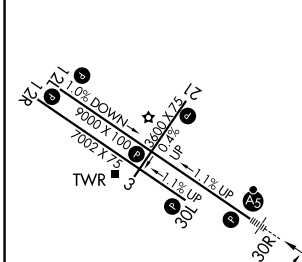
**⚠️ DME from BJC VOR/DME. Simultaneous reception of I-BJC and BJC DME required. DME or RNA RADAR required. When local altimeter setting not received, use Denver Intl altimeter setting and increase all DA 82 feet and all MDA 100 feet. Increase S-ILS 30R all Cats visibility 3/8 mile. Increase S-LOC 30R Cats B/C/D visibility 1/4 mile. Increase Sidestep R30L Cats A/B visibility 1/4 mile, Cats C/D visibility 1/2 mile and Circling Cat C visibility 1/4 mile. For inoperative MALSRL, increase S-ILS 30R all Cats visibility 1/2 mile and increase S-LOC 30R Cat C/D visibility 3/8 mile. For inoperative MALSRL, when using Denver Intl altimeter setting, increase S-ILS 30R all Cats visibility to 2 1/4 miles. Increase S-LOC 30R Cat B visibility to 1 1/4 mile and Cats C/D visibility to 2 1/2 miles. For inoperative MALSRL, when using Denver Intl altimeter setting, increase S-ILS 30R\* all Cats visibility to 1 mile.**  
 \* Missed approach requires a minimum climb of 240 feet per NM to 9700.

**MALSRL**  
 MISSED APPROACH:  
 Climb to 6380 then climbing right turn to 10200 on heading 360° and on FQF VORTAC R-306 to HYGEN INT/FQF 37.9 DME and hold, continue climb-in-hold to 10200.

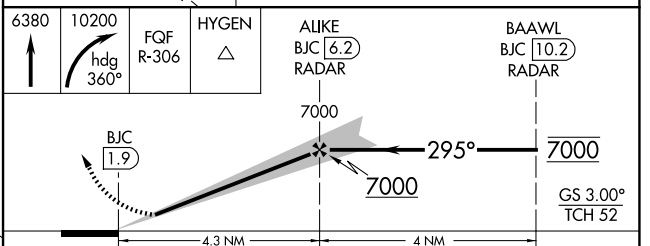
ATIS <b>126.25</b>	DENVER APP CON <b>125.125 263.025</b>	METRO TOWER* <b>118.6 (CTAF) 0 233.7</b>	GND CON <b>121.7</b>
-----------------------	--	---	-------------------------



ELEV 5673	<b>D</b> TDZE 30R 5599 TDZE 30L 5628
-----------	---



**RADAR OR GPS REQUIRED**



CATEGORY	A	B	C	D
S-ILS 30R*	5799-1/2 200 (200-1/2)			
S-ILS 30R	6124-1 3/8 525 (500-1 3/8)			
S-LOC 30R	6300-1/2 701 (700-1/2)	6300-1 5/8 701 (700-1 5/8)		
SIDESTEP 30L	6340-1 712 (700-1)	6340-2 712 (700-2)	6340-2 1/4 712 (700-2 1/4)	
CIRCLING	6340-1 667 (700-1)	6360-2 687 (700-2)	6860-3 1187 (1200-3)	

HIRL Rwy 12L-30R  
 MIRL Rwy 3-21 and 12R-30L  
 REIL Rwy 12L, 12R and 30L

FAF to MAP 4.3 NM

Knots	60	90	120	150	180
Min:Sec	4:18	2:52	2:09	1:43	1:26

SW-1, 11 JUN 2026 to 09 JUL 2026

SW-1, 11 JUN 2026 to 09 JUL 2026