

MELFA, VIRGINIA

AL-5598 (FAA)

26078

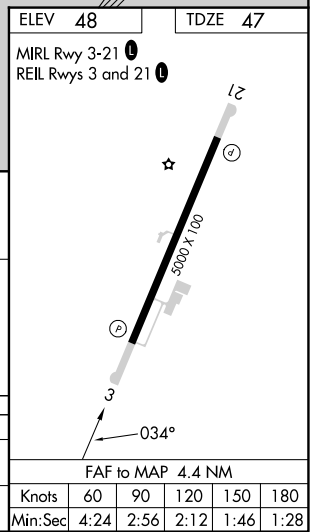
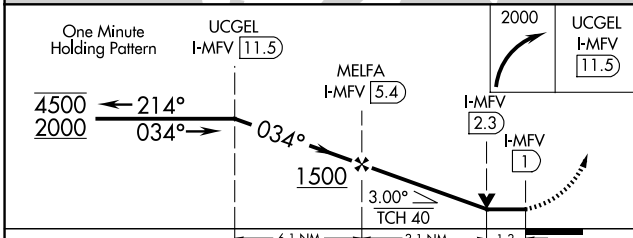
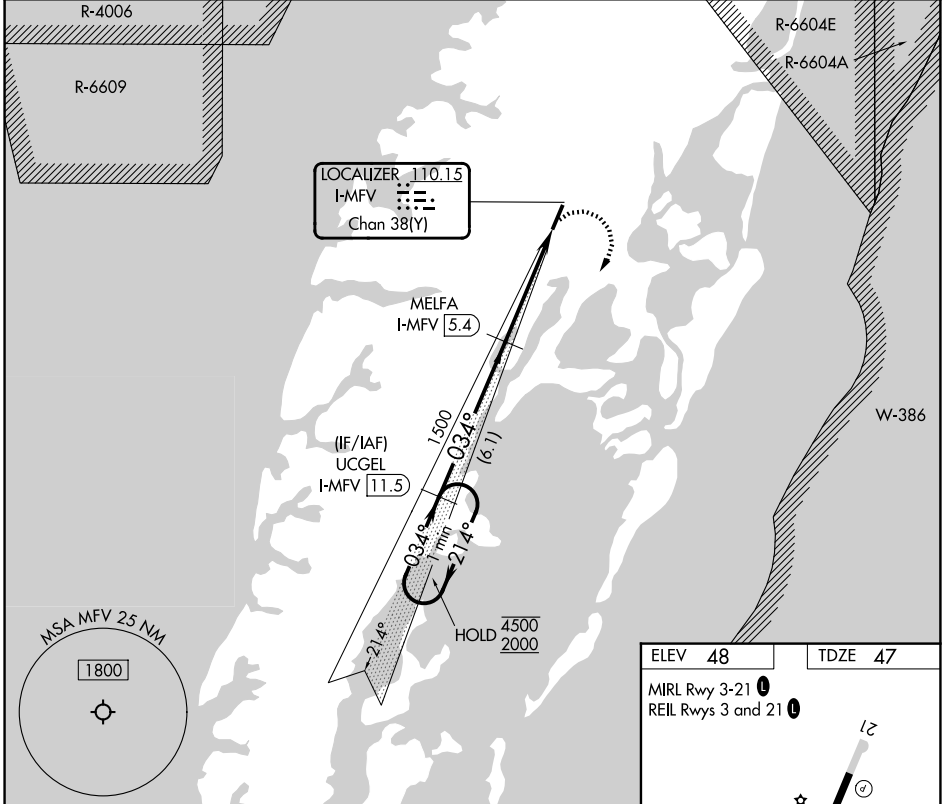
LOC/DME I-MFV 110.15 Chan 38 (Y)	APP CRS 034°	Rwy Ldg TDZE Apt Elev	5000 47 48
--	------------------------	-----------------------------	---------------------------------------

LOC RWY 3

ACCOMACK COUNTY (MFV)

RNP APCH - GPS. ⚠ Rwy 3 helicopter visibility reduction below 3/4 SM NA.	MISSED APPROACH: Climbing right turn to 2000 direct UCGEL and hold.
---	---

AWOS-3 118.175	PATUXENT APP CON * 127.95 314.0	UNICOM 122.8 (CTAF) 0
--------------------------	---	--



CATEGORY	A	B	C	D
S-3	500-1	453 (500-1)	500-1 ³ / ₈	453 (500-1 ³ / ₈)
CIRCLING	500-1 452 (500-1)	560-1 512 (600-1)	700-1 ³ / ₄ 652 (700-1 ³ / ₄)	700-2 652 (700-2)

MELFA, VIRGINIA
Amdt 2 26DEC24

37°39'N-75°46'W

LOC RWY 3

NE-3, 11 JUN 2026 to 09 JUL 2026

NE-3, 11 JUN 2026 to 09 JUL 2026

Knots	60	90	120	150	180
Min:Sec	4:24	2:56	2:12	1:46	1:28