

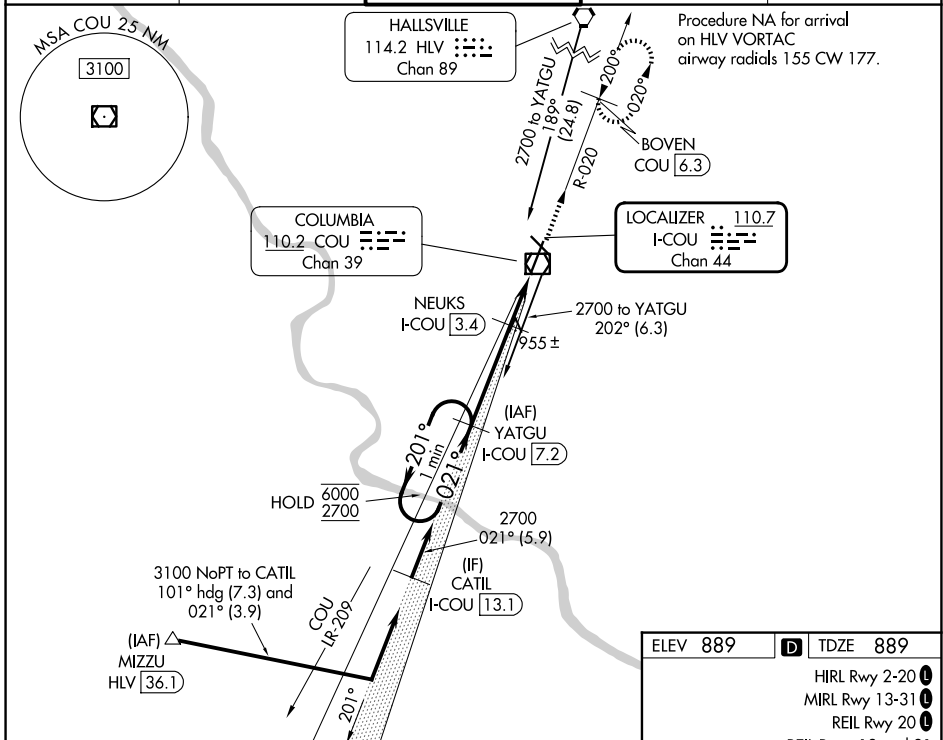
LOC/DME I-COU 110.7 Chan 44	APP CRS 021°	Rwy Ldg TDZE Apt Elev	7401 889 889
--	------------------------	-----------------------------	---

ILS or LOC RWY 2

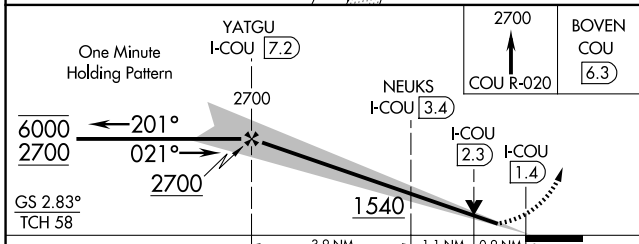
COLUMBIA RGNL (COU)

DME required.	MALSR	MISSED APPROACH: Climb to 2700 on COU VOR/DME R-020 to BOVEN/COU 6.3 DME and hold, continue climb-in-hold to 2700.
<p>▼ Circling NA for Cat D west of Rwy 2 and 13.</p> <p>▲ *RVR 1800 authorized with use of FD or AP or HUD to DA.</p>		

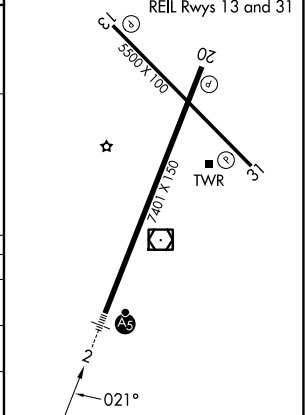
ATIS 128.45	MIZZU APP CON 124.375 353.925	COLUMBIA TOWER * 119.3 (CTAF) 363.25	GND CON 121.6	UNICOM 122.95
-----------------------	---	--	-------------------------	-------------------------



ELEV 889	TDZE 889
HIRL Rwy 2-20	MIRL Rwy 13-31
REIL Rwy 20	REIL Rwys 13 and 31



CATEGORY	A	B	C	D
S-ILS 2*	1089/24		200 (200-½)	
S-LOC 2	1220/24	331 (400-½)	1220/26	331 (400-½)
CIRCLING	1300-1 411 (500-1)	1340-1 451 (500-1)	1360-1½ 471 (500-1½)	1440-2 551 (600-2)



NC-3, 11 JUN 2026 to 09 JUL 2026

NC-3, 11 JUN 2026 to 09 JUL 2026