

LOC/DME	I-OTI	APP CRS	Rwy Ldg	2999
108.5		219°	TDZE	172
Chan 22			Apt Elev	172

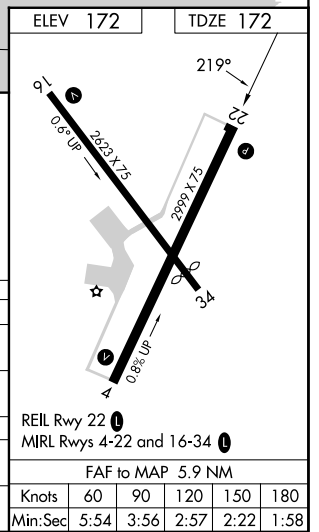
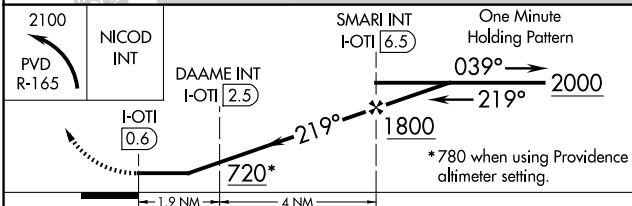
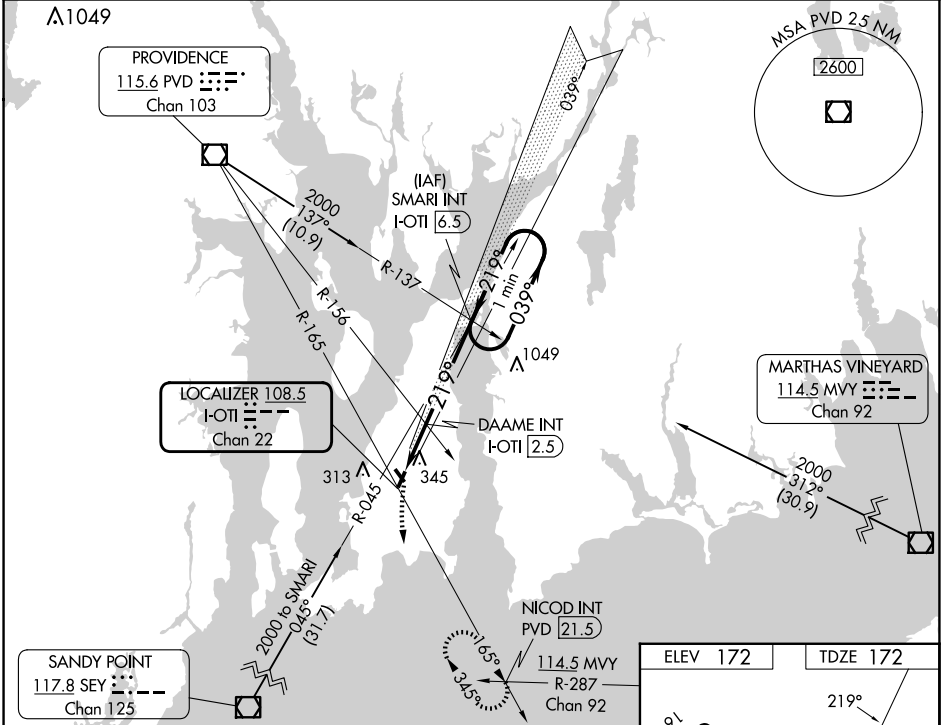
LOC RWY 22

NEWPORT STATE (UUU)

NA When local altimeter setting not received, use Providence altimeter setting and increase all MDA 60 feet. Straight-in Rwy 22 NA at night, Circling Rwy 4, 22, 34 NA at night.

MISSED APPROACH: Climbing left turn to 2100 via PVD VOR/DME R-165 to NICOD INT/21.5 DME and hold.

ASOS 132.075	PROVIDENCE APP CON* 128.7 269.525	CLNC DEL 127.25	UNICOM 123.05 (CTAF)
------------------------	---	---------------------------	--------------------------------



CATEGORY	A	B	C	D
S-22	720-1 548 (600-1)		720-1 ⁵ / ₈ 548 (600-1 ⁵ / ₈)	NA
CIRCLING	760-1 588 (600-1)		780-1 ³ / ₄ 608 (700-1 ³ / ₄)	NA
DAAME FIX MINIMUMS (DUAL VOR RECEIVERS OR DME REQUIRED)				
S-22	640-1 468 (500-1)		640-1 ¹ / ₄ 468 (500-1 ¹ / ₄)	NA
CIRCLING	760-1 588 (600-1)		780-1 ³ / ₄ 608 (700-1 ³ / ₄)	NA

NE-1, 11 JUN 2026 to 09 JUL 2026

NE-1, 11 JUN 2026 to 09 JUL 2026