

WAAS CH 65936 W18A	APP CRS 183°	Rwy Ldg TDZE Apt Elev	4359 539 539
--	------------------------	-----------------------------	---

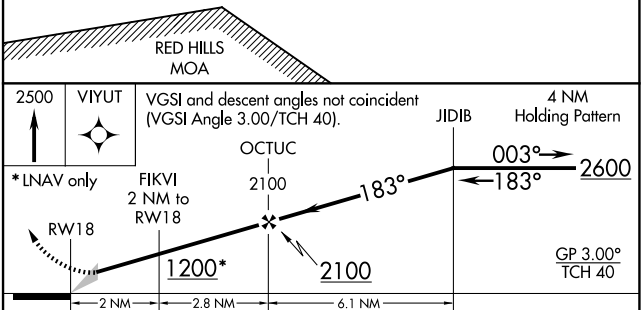
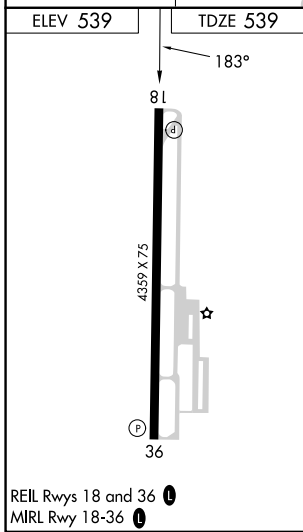
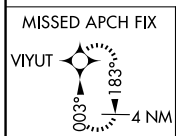
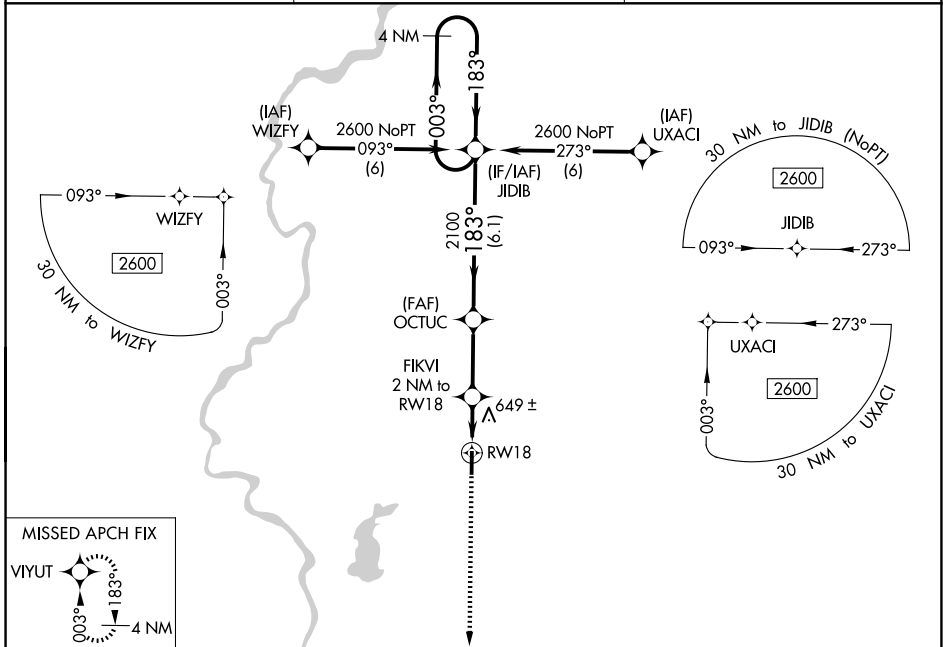
RNAV (GPS) RWY 18

SULLIVAN COUNTY (SIV)

▼ Baro-VNAV NA. DME/DME RNP-0.3 NA. When Robinson altimeter setting is not received, use Terre Haute Intl-Hulman Field altimeter setting and increase all DA/MDA 20 feet.

▲ NA MISSED APPROACH: Climb to 2500 direct VIYUT and hold.

RSV AWOS-3 120.5	HULMAN APP CON 135.35 339.8	UNICOM 122.8 (CTAF) 0
----------------------------	---------------------------------------	---------------------------------



CATEGORY	A	B	C	D
LPV DA	826-1	287 (300-1)		NA
LNNAV/VNAV DA	826-1	287 (300-1)		NA
LNNAV MDA	940-1	401 (500-1)		NA
CIRCLING	1000-1 461 (500-1)	1080-1 541 (600-1)		NA

SULLIVAN, INDIANA
Amdt 1 13NOV14

39°07'N-87°27'W

SULLIVAN COUNTY (SIV)

RNAV (GPS) RWY 18

EC-2, 11 JUN 2026 to 09 JUL 2026

EC-2, 11 JUN 2026 to 09 JUL 2026