

WAAS CH 63217 W32A	APP CRS 315°	Rwy Idg 4800 TDZE 356 Apt Elev 358
--	------------------------	---

RNAV (GPS) RWY 32

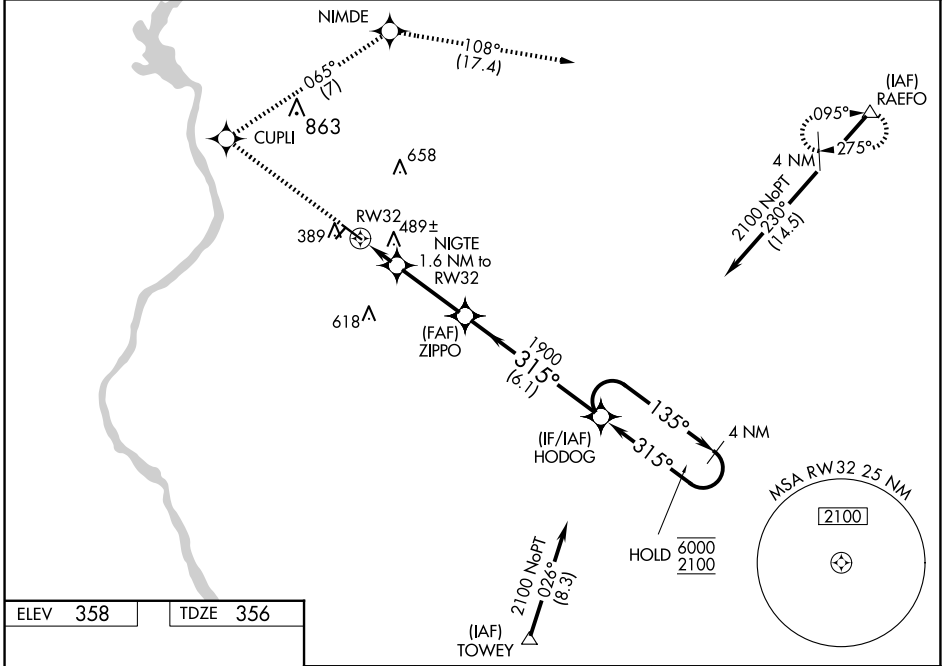
RICHMOND COUNTY (R/CZ)

RNP APCH - GPS.

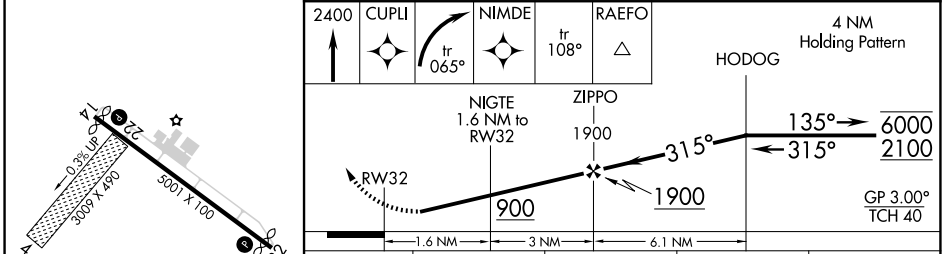
⚠ Circling NA to Rwy 4 and 22. Procedure NA at night. Rwy 32 helicopter visibility reduction below 1 NA. Baro-VNAV NA when using Mackall altimeter setting. For uncompensated Baro-VNAV systems, LNAV/VNAV NA below -1.5°C or above 54°C. When local altimeter setting not received, use Mackall altimeter setting; increase LPV DA to 679 feet; LNAV/VNAV DA to 833 feet and all visibilities ½ SM; increase all MDAs 40 feet and LNAV visibility Cat C/D ½ SM.

MISSED APPROACH: Climb to 2400 direct CUPLI and right turn on track 065° to NIMDE and on track 108° to RAEFO and hold.

AWOS-3 118.775	FAYETTEVILLE APP CON 127.8 343.725	UNICOM 122.8 (CTAF)
--------------------------	--	-------------------------------



ELEV 358	TDZE 356
----------	----------



CATEGORY	A	B	C	D
LPV DA		640-1	284 (300-1)	
LNAV/VNAV DA		794-1¼	438 (500-1¼)	
LNAV MDA	740-1	384 (400-1)	740-1⅛	384 (400-1⅛)
CIRCLING	800-1 442 (500-1)	820-1 462 (500-1)	960-1¾ 602 (700-1¾)	960-2 602 (700-2)

REIL Rwy 32
MIRL Rwy 14-32

SE-2, 11 JUN 2026 to 09 JUL 2026

SE-2, 11 JUN 2026 to 09 JUL 2026