

WAAS CH 78227 W01A	APP CRS 007°	Rwy Idg TDZE Apt Elev	6502 124 130
--	------------------------	-----------------------------	---

RNAV (GPS) RWY 1

HARRELL FLD (CDH)

RNP APCH - GPS.

⚠ Baro-VNAV NA when using El Dorado altimeter setting. For uncompensated Baro-VNAV systems, LNAV/VNAV NA below -15°C or above 43°C. Rwy 1 helicopter visibility reduction below ¼ SM NA. When local altimeter setting not received, use El Dorado altimeter setting and increase LPV DA to 507 feet, LNAV/VNAV DA to 499 feet and all MDA 80 feet; increase LPV all Cats visibility ½ SM, LNAV Cats C and D ¾ SM, and Circling Cat D ¼ SM.

MISSED APPROACH:
Climb to 2700 direct
BUSGE and hold.

AWOS-3
125.2

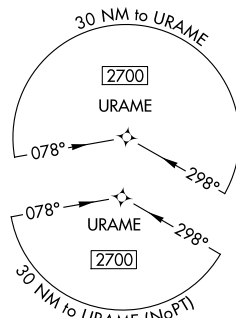
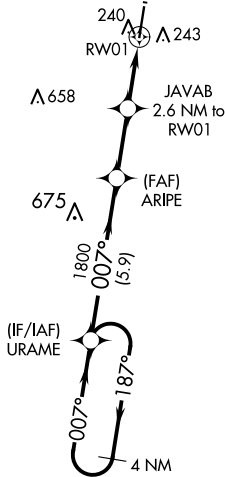
FORT WORTH CENTER
128.2 269.1

UNICOM
122.7 (CTAF)

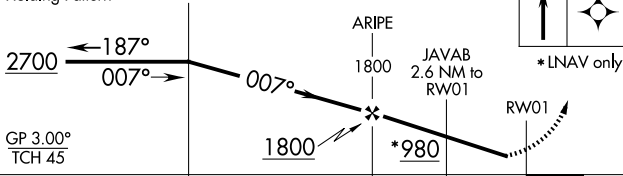
MISSED APCH FIX



Λ 424



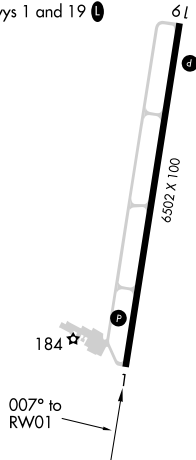
4 NM
Holding Pattern



CATEGORY	A	B	C	D
LPV DA		430-1	306 (300-1)	
LNAV/VNAV DA		422-1	298 (300-1)	
LNAV MDA		500-1	376 (400-1)	
CIRCLING	560-1 430 (500-1)	580-1 450 (500-1)	580-1½ 450 (500-1½)	960-2¾ 830 (900-2¾)

ELEV 130 TDZE 124

MIRL Rwy 1-19
REIL Rws 1 and 19



SC-1, 11 JUN 2026 to 09 JUL 2026

SC-1, 11 JUN 2026 to 09 JUL 2026